

---

# *Annual Report 2015*

---

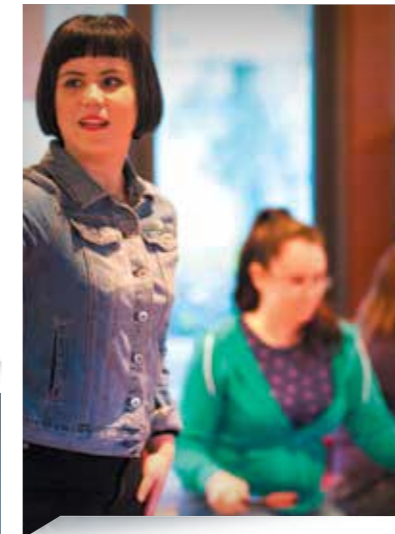


# Contents

University Council 12



14  
Teaching  
& Innovation



30  
Community  
engagement



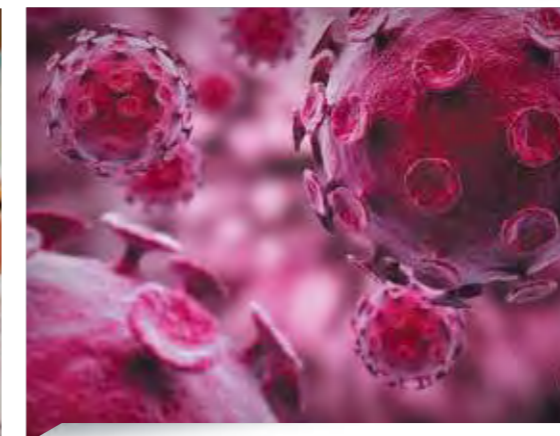
## Vision

Flinders is the University that engages. We aim to transform the lives of individuals and communities, and find ethical and innovative solutions to make a positive difference to society's most challenging problems.

Our attention on South Australia and the Northern Territory has the explicit objective of encouraging the sustainable economic, social and cultural development of the 'central corridor' of Australia and expanding its connection to Asia and the wider world.

We commit to: high quality teaching, internationally respected and high-impact research, rigorous intellectual enquiry, promotion of fairness, integrity, equity, social justice, ethics, diversity and cross-cultural understanding and respect, with a special recognition of Australian Indigenous cultures, environmental sustainability, individual responsibility and achievement, complementing collaboration and teamwork.

4  
Chancellor's  
Review



18  
Research Success



24  
Staff, students &  
alumni



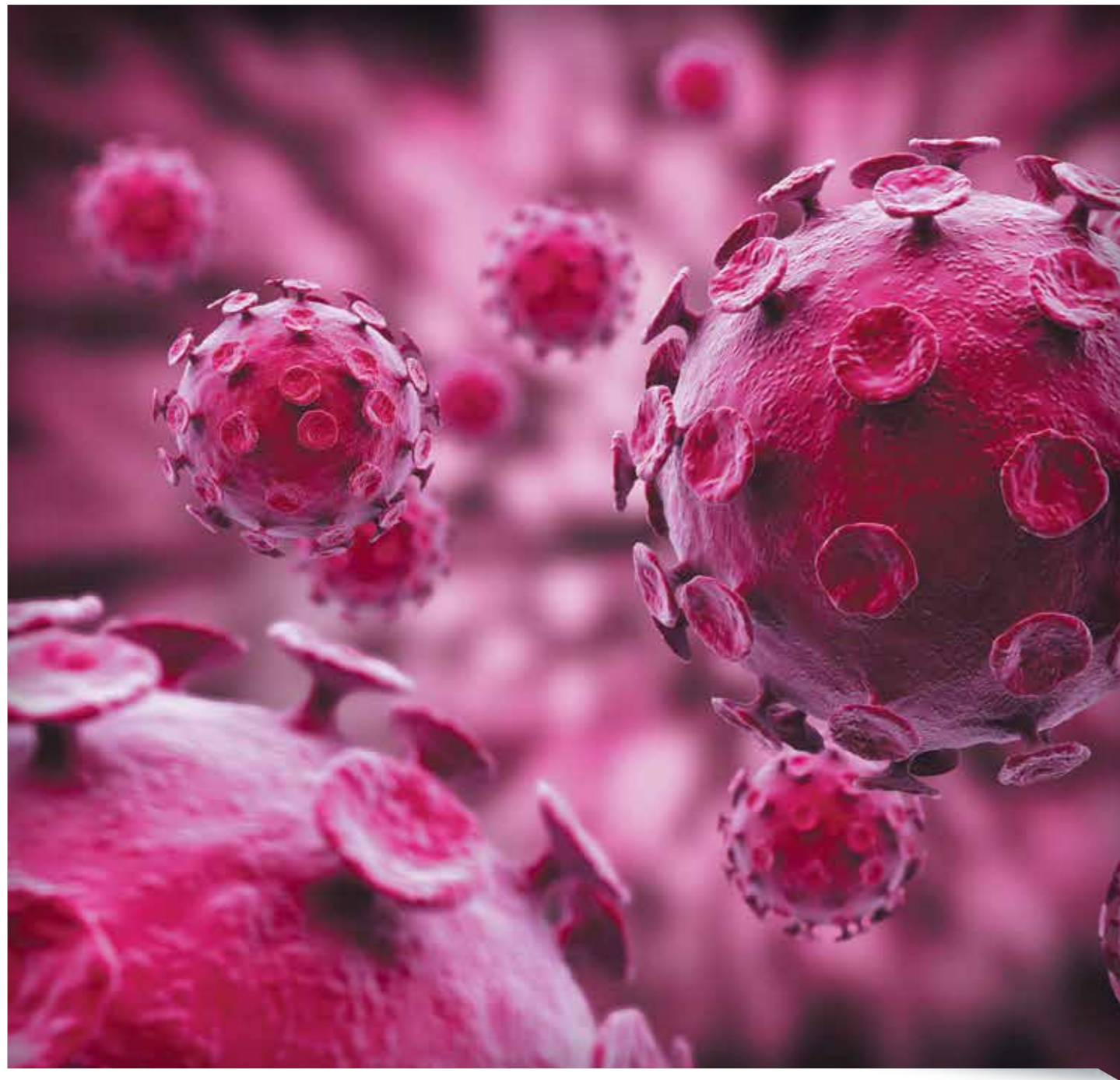
37 Income Statement  
38 Statement of Comprehensive Income  
39 Statement of Financial Position  
40 Statement of Changes in Equity  
41 Statement of Cash Flows  
42 The Chancellor's Letter of Transmission  
43 Council Members' Attendance

6  
Vice-Chancellor's  
Review



4 Chancellor's Review  
6 Vice-Chancellor's Review  
8 Flinders Overview  
10 Key Statistics  
12 University Council  
14 Teaching & Innovation  
18 Research Success  
24 Staff, students & alumni  
28 Global footprint  
30 Community engagement  
35 Governance and Risk  
36 Financial performance statement

## Flinders builds foundation for long-term prosperity



STEPHEN GERLACH AM  
CHANCELLOR

**A**fter decades of research achievements and education innovation, it was both timely and gratifying to see Flinders University ranked among the top two per cent in the 2015 Times Higher Education world university rankings.

The remarkable progression of our University was underscored by a number of significant research achievements during the year, as well as the opening of the Flinders Innovation Hub at Tonsley.

Flinders at Tonsley is a place where business interacts with our researchers and students in areas such as engineering, medical devices and nanoscale technologies to create the new products and

processes for the 21st century.

Tonsley co-locates the University's School of Computer Science, Engineering and Mathematics, with the Medical Device Research Institute, the Centre for Nanoscale Science and Technology and some of Adelaide's leading businesses.

This redevelopment sets a bold precedent for the University, demonstrating the value of state-of-the-art research and education facilities which leverage technological advances and embed on-site collaboration with business and industry.

Flinders continued its strategic investment in infrastructure with the redevelopment of the heart of the Bedford Park campus, setting a new standard for a 21st century university. Whilst the building works had the potential to be disruptive, the University community rallied around the redevelopment with a minimum of fuss, playing a crucial role in helping us to realise our stronger future.

Flinders' core strength in the midst of many challenges to

**"FLINDERS' CORE STRENGTH IN THE MIDST OF MANY CHALLENGES TO THE HIGHER EDUCATION SECTOR CONTINUES TO BE ITS PEOPLE. OUR SUCCESS IS MADE POSSIBLE THANKS TO A TALENTED AND COMMITTED GROUP OF TEACHERS, RESEARCHERS AND PROFESSIONAL STAFF WHO INSPIRE OUR STUDENTS TO DO GREAT THINGS – EVERY DAY."**

*– Stephen Gerlach AM Chancellor*

the higher education sector continues to be its people. Our success is made possible thanks to a talented and committed group of teachers, researchers and professional staff who inspire our students to do great things – every day.

I'd like to thank my University Council colleagues, our Vice-Chancellor Professor Colin Stirling and the University staff who have helped to pave the way throughout this significant growth phase.

In 2015 we laid the foundations for a strong and sustainable future. Now it's time to build on those

foundations as we celebrate our 50th year and look forward to the launch of the University's next strategic plan.

Below: Professor Craig Simmons  
Right: Flinders' new Student Hub and Plaza

## Flinders gains global recognition



PROFESSOR COLIN J STIRLING  
VICE-CHANCELLOR

It has been my privilege to join Flinders University at a time of transformation and opportunity.

We have maintained our position as the fastest-growing university in South Australia, increased our research capabilities and invested significantly in infrastructure – establishing key foundations that will support us as we create a truly outstanding experience for our students.

Flinders University has maintained a strong international profile and continued its standing, rising to the world's top 300 universities in the THE World University Rankings, recognising the

achievements of our staff in high-quality teaching and high-impact research.

So too, we continue to attract international students, with growth rates above the national average, and an international student population representing more than 90 countries.

On the back of successful New Colombo Plan grants, 2015 saw record numbers of Flinders University students undertaking part of their studies overseas, creating opportunities to build their cross-cultural competencies and ability to think critically about the world and their roles in it.

The Flinders' Jembatan initiative was launched in July 2015 and demonstrates Flinders' commitment to building people to people links between Australia and Indonesia. Jembatan spans a range of activities including student mobility, and staff and community engagement to increase the understanding of

**"THE AUSTRALIAN RESEARCH COUNCIL FOUND 90 PER CENT OF FLINDERS' RESEARCH RANKED AT OR ABOVE WORLD STANDARD."**

– Professor Colin J Stirling Vice-Chancellor



modern Indonesian Society in South Australia.

We've achieved a number of important breakthroughs in 2015 and just as importantly, our researchers are on the cusp of many more.

The Australian Research Council found 90 per cent of Flinders'

research ranked at or above world standard, in the 2015 ERA.

Our status as a leading research university was affirmed by the South Australian Science Excellence Awards in 2015, with the university winning half of the awards available.



Professor Craig Simmons was recognised as the South Australian Scientist of the Year in 2015 for his outstanding service to research and education in hydrology. Dr Katherine Moore, won the award for PhD research excellence and Dr Maria Parappilly won the STEM Tertiary Teaching Award.

Another research highlight was the patenting of Professor Colin Raston's Vortex Fluidic Device, a ground-breaking technology that has extraordinary potential in cancer treatment, drug manufacture and biofuel production.

The University's outstanding academic staff complement was bolstered with a number of significant appointments during the year, including Deputy Vice-Chancellor Research Professor

Robert Saint, Strategic Professor of Industrial Transformation Professor John Spoehr, Strategic Professor of Social and Policy Studies Adam Graycar, Strategic Professor in Reproductive Medicine Kelton Tremellen and Strategic Professor in Restorative Care Susan Gordon.

Course innovation continued in 2015. The first student intakes were welcomed into several new courses including Fashion, Visual Arts, Community Services and Tourism Management.

The enhancement of information and service provision to students was given a major boost with the launch in September of Flinders Connect as a one-stop source of advice.

In March 2015 we formally opened Flinders at Tonsley which sees the great pillars of education, research, industry, business and government unite – on the one site, and in the one building. In just two years, our Tonsley-based New Venture Institute has already helped create more than 115 start-ups and 51 new jobs, and the success of the Medical Device Partnering Program was reaffirmed by additional State Government funding.

The Flinders University Art Museum and City Gallery is being used increasingly as a teaching resource and was awarded an Office of Learning and Teaching Grant to embed employability skills through Object Based Learning.

During 2015 we continued upgrades to our facilities and completed work on our single largest infrastructure investment for our main campus to date – a new Student Hub and Plaza to provide the very latest in learning technologies, an array of study places and vibrant social spaces, enhancing the experience of our growing student population.

In 2015 we built the momentum. In 2016, as we embark on our 50th anniversary year, I look forward to ensuring this momentum continues into our next half-century.



**FASTEST  
GROWING**  
UNIVERSITY IN SOUTH AUSTRALIA

ALMOST **90**  
THOUSAND  
ALUMNI

RANKED IN THE **top**  
**20%**  
OF UNIVERSITIES GLOBALLY

**25,000**   **CURRENT STUDENTS**

 **MORE THAN**  
**150**  
**UNDERGRADUATE COURSES**

 **ALMOST**  
**300**  
**POSTGRADUATE COURSES**



A GEOGRAPHIC  
FOOTPRINT  
EXTENDING  
FROM  
ADELAIDE TO  
REGIONAL SA,  
VICTORIA AND  
THE NORTHERN  
TERRITORY



STUDENTS FROM MORE THAN  
**NINETY**  
**COUNTRIES**



RESEARCH RANKED  
ABOVE WORLD CLASS:

**90%**



ON CAMPUS  
ACCOMMODATION  
FOR 560 STUDENTS



TOTAL  
RESEARCH  
INCOME  
EXCEEDED  
\$80 MILLION

## STUDENT AND STAFF NUMBERS - FIVE YEAR FIGURES

	2011	2012	2013	2014	2015
<b>STUDENT NUMBERS</b>					
Australian	16,310	17,980	19,302	20,443	20,155
International	3,842	3,808	3,903	4,241	4,564
Onshore	2,553	2,446	2,336	2,528	2,723
Offshore	1,289	1,362	1,567	1,713	1,841
<b>Total</b>	<b>20,151</b>	<b>21,786</b>	<b>23,205</b>	<b>24,683</b>	<b>24,719</b>
<b>Gender</b>					
Female Students	12,909	13,957	14,782	15,557	15,620
Male Students	7,242	7,829	8,423	9,126	9,099
<b>Total</b>	<b>20,151</b>	<b>21,786</b>	<b>23,205</b>	<b>24,683</b>	<b>24,719</b>
<b>STAFF (FTE)</b>					
Academic	796	831	856	873	874
Non-Academic	1,073	1,097	1,153	1,198	1,207
<b>Total</b>	<b>1,869</b>	<b>1,928</b>	<b>2,010</b>	<b>2,071</b>	<b>2,081</b>
<b>Student Staff Ratio</b>	<b>17.68</b>	<b>17.79</b>	<b>17.91</b>	<b>18.28</b>	<b>18.43</b>
<b>HIGHER DEGREE RESEARCH ENROLMENTS</b>					
Masters Research	121	123	116	113	102
PhD	910	910	974	1,051	1,075
<b>Total</b>	<b>1,031</b>	<b>1,033</b>	<b>1,090</b>	<b>1,164</b>	<b>1,177</b>

Notes on Student Staff Ratio calculation:

(i) Includes all Flinders University FT/FFT and Casual Staff FTE (2015 casuals are provisional only) but excludes all staff with a "Research Only" work function.

(ii) Student Load based on all onshore and offshore load at all levels (including Higher Degree Research)

## FINANCIAL - KEY FIVE YEAR FIGURES

	2011	2012	2013	2014	2015
	\$'000s	\$'000s	\$'000s	\$'000s	\$'000s
<b>UNIVERSITY - OPERATING REVENUE</b>					
Commonwealth Government Assistance	199,879	204,347	222,859	227,513	230,381
HECS	60,223	68,198	80,596	88,927	92,098
FEE HELP	3,687	4,277	6,618	6,884	7,436
SSAF HELP	-	1,463	1,708	1,887	1,926
State/Territory and SA Local Governments	18,030	18,043	14,682	8,937	9,613
Fees and Charges	55,235	56,045	63,023	72,102	82,628
Investment income	15,600	13,400	12,945	9,410	8,505
Other	25,220	29,116	26,776	19,449	23,453
<b>Total</b>	<b>377,874</b>	<b>394,889</b>	<b>429,207</b>	<b>435,109</b>	<b>456,040</b>
<b>RESEARCH INCOME</b>					
Australian Research Council	8,657	8,861	9,783	7,536	8,368
Department of Education	25,109	26,349	26,932	27,369	27,726
NH&MRC	8,733	7,691	8,278	9,478	9,689
Other Commonwealth Research	18,538	18,582	24,291	23,046	18,232
SA Government	8,278	5,771	5,634	4,018	3,159
Industry and Other	11,248	12,643	14,981	10,239	11,672
<b>Total</b>	<b>80,563</b>	<b>79,897</b>	<b>89,899</b>	<b>81,686</b>	<b>78,846</b>
<b>Net Assets</b>	<b>554,872</b>	<b>588,455</b>	<b>628,517</b>	<b>638,582</b>	<b>660,352</b>



**1** Mrs Christine Zeitz  
- Member  
BEC(ACC) FLIN, CERT  
BUS UNISA, GAICD

**2** Mr Douglas Gautier  
AM - Member  
BA (HONS) FLIN

**3** Mrs Leonie J Clyne  
OAM - Deputy  
Chancellor  
BA (PSYCH) FLIN, MAICD

**4** Ms Elizabeth Perry  
- Member  
LLB ADEL, FAICD

**5** Professor Colin  
Stirling -VC  
BSC (MICROBIOLOGY), EDIN,  
PHD GENETICS, GLAS

**6** Professor Brenda  
Wilson - Member  
DAPPSCI (NURSING) FLIN,  
BBUS UNISA, MBA UNISA,  
FAICD, FACN, FWSM, FACHSM

**7** Mr Stephen  
Hains - Deputy  
Chancellor  
BA (HONS) FLIN,  
MPHIL EDIN, FAICD

**8** Mr Stephen Gerlach  
AM - Chancellor  
LLB ADEL, FAICD

**9** Mr Austin R M  
Taylor - Member  
BEC ADEL, FCA, FAICD, MAICM

**10** Professor Eimear  
Muir-Cochrane -  
Presiding Member  
of Academic Senate  
BSC(HONS), LON, RN, RMN,  
MNS, PHD, RMIT, FACMHN, GRAD  
DIP ADULT ED

**11** Dr Clare McCarty  
- Member elected  
by academic staff  
BA(HONS) KCL(LOND), MA  
IOE(LOND), PHD UTS

**12** Ms Karen Patterson  
- Member elected  
by postgraduate  
students  
BMEDSC, BSC (HONS)

**13** Ms Debra Hackett  
- Member elected by  
professional staff  
BEC FLIN, GRAD CERT THST FLIN

**14** Mr Leon Cermak  
- Member elected by  
undergraduate  
students

**15** Professor Leon Lack  
- Member elected by  
academic staff  
BA STAN, PHD ADEL

**16** Ms Pamela Smith  
- Member elected by  
professional staff  
BA (HONOURS) FLIN, MASTER  
OF PUBLIC ADMINISTRATION  
(MANAGEMENT) FLIN

NOT PRESENT: MR MARTY GAUVIN, MS KATHRYN GRAMP,  
MRS PEGGY LAU FLUX, MR GÖRAN ROOS,  
MR JAMES VIGUS.



## World-leading facilities

**F**linders continues to focus on the experience of its students by investing in world-leading facilities and innovation.

The new \$120 million Tonsley building features robotics and automation, laser-cutting, design and 3D printing, biomedical research equipment and specialised laboratories in electronics and control, mechanics and material, networking, maritime, civil engineering and other areas of study.

Flinders laboratories feature some of the most technologically advanced clinical and simulation equipment available, adding to the overall experience of students and teachers alike.

## Appointments

PROMINENT SOUTH AUSTRALIAN ECONOMIST JOHN SPOEHR JOINED FLINDERS UNIVERSITY'S BUSINESS SCHOOL AS A STRATEGIC PROFESSOR IN NOVEMBER.

**F**urther strengthening Flinders' engagement with industry innovation and transformation, Professor Spoehr accepted the opportunity to establish a new entity at Flinders at Tonsley – the Australian Industrial Transformation Institute (AITI). Professor Spoehr will lead the Institute, which is designed to contribute significantly to the University's strategic support for South Australia's evolution into a high tech economy.

## Accolades

**F**linders Medical School was ranked in the world top 200, and in the global top 10 for those less than 50 years old.

Flinders' Psychology courses have been rated in the top 20 in Australia and top 200 in the world for three years running.

The annual Federal Government Office of Learning and Teaching citations recognised Dr Maria Parappilly for inspiring students, while Dr Sarah Mahoney and Jacky Lowe received joint citations for their academic and administrative leadership of Flinders' Onkaparinga Clinical Education Program.

Two Flinders-led teams were awarded highly competitive Office for Learning and Teaching grants. Fiona Salmon (Director of the Flinders Arts Museum) led a team, including participants from the University of Melbourne and TAFE SA, which was awarded an OLT grant to investigate enhancing student employability through object-based learning. Another multi-institutional team led by Dr Antonella Strambi (School of Humanities and Creative Arts) won an OLT grant to examine innovation in the delivery of language courses.

## Entrepreneurship and Innovation

### IN 24 MONTHS THE NEW VENTURE INSTITUTE HAS:

- » Launched 115 Startups
- » Logged 2,833 mentoring hours
- » Helped create 51 new jobs
- » Connected more than 300 mentors with students
- » Assisted 101 businesses
- » Developed students' practical knowledge and skills relevant to future employers.

## Highlights

### TOP 10 IN WORLD MEDICAL SCHOOLS

Flinders Medical School was ranked in the Top 10 of medical schools 50 years and under globally.

Flinders School of Psychology was ranked in the global Top 20 for the third year running.

### INTERNATIONAL IMPACT

Agreements with Indonesia's Universitas Padjadjaran, Universitas Nusa Cendana, Diponegoro and Bogor Agricultural University and Singapore's Ministry of Health strengthened our international education.

### FLINDERS LEADS IN ASIA-PACIFIC

Flinders posted a nationally impressive performance in the 2015 Colombo Mobility plan, winning more than \$1.2m to support a range of student projects in the Asia Pacific during 2016.

## Real-world focus

FLINDERS BELIEVES DEVELOPING ENTREPRENEURIAL SKILLS AND THINKING IS A CRUCIAL ASPECT OF EDUCATION.

**A**s such, the University continues to develop strong relationships with commerce and industry, both in Australia and abroad, giving students real-world experience and the skills to take their ideas and education to the next level.

In 2015 we grew our connections in the innovation space in Asia, the United States and Europe – providing students and researchers with 'landing pads' to develop innovations, encourage mentoring and leverage start-up investment and research funding.





## Education in action

FLINDERS' QUEST TO MAKE A DIFFERENCE ISN'T CONFINED BY NATIONAL BOUNDARIES.

In Indonesia, we are helping to build capacity and skills by offering courses and programs in conjunction with government agencies and leading universities.

Flinders launched *Jembatan* (Bridge), a 50th anniversary initiative to further develop social and business links with Indonesia by fostering understanding of culture and language.

In Hunan, we are helping to design and deliver a course that will create China's first generation of general practitioners, transforming and modernising China's health system.

It's not just our courses that are travelling overseas. We are increasingly promoting and supporting exchange opportunities for our students.

Flinders performed strongly in the 2015 round of the Australian Government's expanded New Colombo Mobility Plan program, which supports a range of student projects in the Asia-Pacific during 2016.

More than 190 Flinders students will take part in 18 projects in a range of study, practicums and research placements in Indonesia, China, Fiji, Singapore, India, Malaysia, Nepal and the Philippines. A further 92 students will undertake

short-term undergraduate and postgraduate study and research projects in the Philippines, Nepal, India, China, Germany, Malawi and the USA under the federal Endeavour Mobility grants program.

In 2015 the Faculty of Medicine, Nursing and Health Sciences developed links with universities, colleges and research institutions around the world - including Canada, China, Finland, France, Germany, Japan and the Netherlands - to enable student and staff mobility, research and teaching collaborations and the establishment of joint research labs, education centres and schools.

Flinders remains the leading provider of education supporting development objectives via Australia Awards Scholarships (AAS), with 171 AAS scholars from 24 countries commencing their studies at Flinders in 2015.



## Innovation and the high value road to growth

PROFESSOR JOHN SPOEHR - DIRECTOR, FLINDERS UNIVERSITY AUSTRALIAN INDUSTRIAL TRANSFORMATION INSTITUTE



As we approach the closure of our automotive manufacturing industry, we must accelerate the growth of new industries and jobs. This includes key areas of manufacturing where we know that innovation and moving up the global manufacturing value chain is essential to rebuilding the sector. While we have lost around 30,000 manufacturing jobs in South Australia, some subsectors of manufacturing are growing on the back of wise investments in new technology, business models and workplace organisation.

What we know from successful industrial transformation in the face of great economic challenges is that pervasive risk aversion and disinvestment accelerate decline. Strategies are needed to encourage and reward radical innovations that chart sustainable growth paths in domestic and global markets. After a period of obscurity, innovation is now back on the national agenda. Institutions capable of engaging deeply with this are needed.

Having investigated efforts to rejuvenate economies facing major industry closures, it is clear to me that Flinders University is engaged in one of the most exciting transformation ventures on display globally. Rising out of the closure of Mitsubishi in 2008, the Tonsley innovation precinct combines many of the ingredients of successful

transformation. This includes the strategically important roles that the South Australian Government, industry and Flinders University have played in the redevelopment of the site, ensuring that opportunities well beyond those of commercial property development were under consideration right from the beginning.

Successful industrial precincts need innovation catalysts. Flinders at Tonsley is proving to be just that, bringing researchers, industry and government to work more closely together. At the other end of the site is the world class Tonsley TAFE. Slowly but surely some of the State's leading businesses are joining global companies like Siemens to leverage the benefits of proximity to educational and research assets.

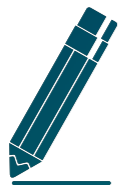
# Research funding overview



2015

**\$80 MILLION**

**\$14 MILLION**



**\$2.35 MILLION**



**\$250,000**



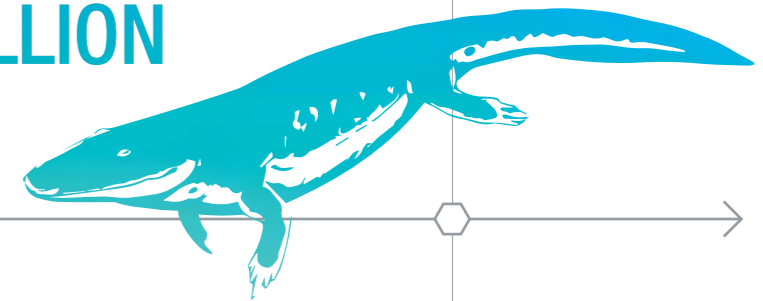
**\$14.5 MILLION**



**\$4.3 MILLION**



**\$5.1 MILLION**



TOTAL RESEARCH INCOME EXCEEDED \$80 MILLION IN 2015, UP FROM \$62 MILLION IN 2011.

COMMONWEALTH GOVERNMENT ARC AND NHMRC CATEGORY 1 RESEARCH GRANTS REACHED \$14 MILLION, WITH MORE THAN 600 RESEARCH-ACTIVE STAFF EACH PRODUCING MORE THAN FIVE PAPERS IN FIVE YEARS.

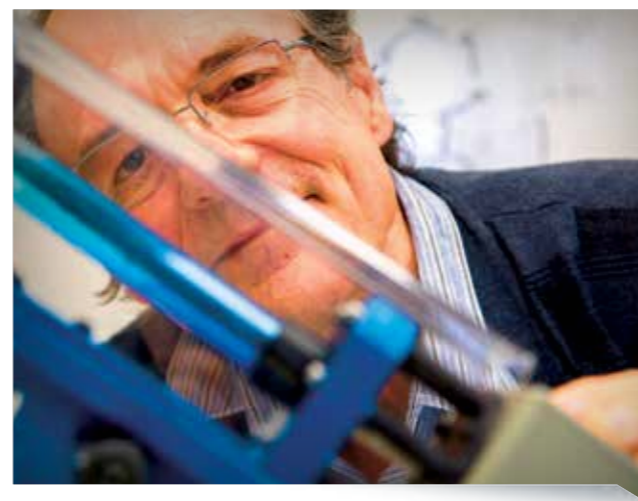
IN 2015, SIX FLINDERS PROJECTS RECEIVED AUSTRALIAN RESEARCH COUNCIL LINKAGE FUNDING, SECURING \$2.35 MILLION IN GRANTS FOR PROJECTS WITH INDUSTRY THAT INCLUDE RESEARCH ON WATER RESOURCES FOR REMOTE COMMUNITIES, THE DEVELOPMENT OF HIGH-VALUE SEAWEED PRODUCTS, THE ADDITION OF ZINC TO WHEAT AND THE CAPACITY OF AUSTRALIA'S AGED CARE WORKFORCE.

THE MEDICAL DEVICE PARTNERSHIP PROGRAM RECEIVED RENEWED FUNDING OF \$250,000 FROM THE STATE GOVERNMENT. SINCE 2008, THE MDPP HAS ASSISTED MORE THAN 150 COMPANIES AND INVENTORS IN DEVELOPING MEDICAL DEVICES THAT IMPROVE DIAGNOSIS, TREATMENT AND REHABILITATION, AS WELL AS TECHNOLOGIES THAT ENABLE THE AGEING AND THOSE LIVING WITH DISABILITIES TO LIVE WITH GREATER INDEPENDENCE.

FLINDERS IS PLAYING AN INTEGRAL ROLE IN A NEW \$14.5 MILLION SLEEP RESEARCH CONSORTIUM. THE COOPERATIVE RESEARCH CENTRE FOR ALERTNESS, SAFETY AND PRODUCTIVITY – A PARTNERSHIP BETWEEN FLINDERS, MONASH AND SYDNEY UNIVERSITIES – IS DEVELOPING A RANGE OF INNOVATIVE STRATEGIES TO REDUCE FATIGUE, RESULTING IN FEWER INJURIES, ENHANCED WORKPLACE PERFORMANCE AND IMPROVED QUALITY OF LIFE.

RESEARCH TO PIONEER NEW MATERIALS FOR INDUSTRY AND A STUDY THAT AIMS TO SHED LIGHT ON THE KEY EVOLUTIONARY DEVELOPMENT OF AIR-BREATHING TETRAPODS FROM FISH WERE AMONG THE FLINDERS RESEARCH PROJECTS TO RECEIVE \$4.3 MILLION FROM THE AUSTRALIAN RESEARCH COUNCIL AND THE ANNUAL GRANTS ROUND FOR 2015.

NATIONAL HEALTH AND MEDICAL RESEARCH COUNCIL FUNDING OF NEARLY \$5.1 MILLION WAS MADE TO FLINDERS FOR PROJECTS THAT WILL ADDRESS DISEASES THAT INCLUDE DEMENTIA, BOWEL CANCER AND GLAUCOMA-INDUCED BLINDNESS.



FLINDERS PATENTED THE VORTEX FLUIDIC DEVICE, AN INVENTION BY PROFESSOR COLIN RASTON THAT UNRAVELS AND REARRANGES PROTEINS. FAMOUSLY ILLUSTRATED BY UNBOILING AN EGG, IT HAS EXTRAORDINARY POTENTIAL IN CANCER TREATMENT, DRUG MANUFACTURING, BIOFUEL PRODUCTION AND MORE.

## Key research breakthroughs

**F**linders patented the Vortex Fluidic Device, an invention by Professor Colin Raston that unravels and rearranges proteins. Famously illustrated by unboiling an egg, it has extraordinary potential in cancer treatment, drug manufacturing, biofuel production and more.

In a world first, neuroscientists led by Associate Professor Damien Keating have identified a series of chemical tools that can increase or inhibit the release of neurotransmitters by neurons, the cells of the brain. The discovery has a wide range of potential pharmaceutical applications in neurological conditions ranging from schizophrenia to depression.

Chemistry researcher Dr Justin Chalker created a cost-effective polymer that removes toxic mercury from the environment. The dark red polymer is made from the industrial waste products sulphur and limonene from citrus peel, and turns bright yellow when it absorbs mercury.

## Fellowships

**T**he Heart Foundation awarded fellowships to two Flinders researchers, comprising a \$600,000 Future Leaders Fellowship to Professor Robyn Clark and a postdoctoral fellowship to hypertension/cardiology researcher Dr Rebecca Perry.

Professor Adrian Werner of the School of Chemical, Physical and Earth Sciences was awarded a prestigious Australia Research Council Future Fellowship. The \$919,000 award will fund four years of research into groundwater, with a focus on the mechanisms of coastal aquifers.

Health Sciences researcher Dr Kate Laver was awarded a \$476,000 Dementia Research Development Fellowship to support a research project that aims to take evidence-based interventions for people with dementia into their homes using telehealth technologies. Using such technology enables the use of centrally located specialised personnel, avoiding duplication and improving services to rural and remote areas.

## World-class standards

**F**linders has reaffirmed its position as a world-class research-intensive university and underscored its commitment to making a positive difference through high quality research.

### FLINDERS IS COMMITTED TO FIVE KEY AREAS OF ONGOING RESEARCH

- » Biomedical and Clinical Sciences
- » Culture and Society
- » Health and Human Behaviour
- » Molecular Science and Technology
- » Water and Environment

Ninety per cent of the University's research has been ranked at or above world standard in the 2015 Excellence in Research Australia (ERA) assessment.

Flinders continues to dominate the fields of Nanotechnology, Cardiovascular Medicine and Haematology, Ophthalmology and Optometry, Human Movement and Sports Science, and Nutrition and Dietetics – where it received the highest “well above world class” ERA ranking.

A further 14 fields, including Oncology, Psychology, Physical Chemistry, Plant Biology and Biomedical Engineering, were ranked “above world class” by the ERA assessment.

A further 23 fields were ranked at world standard.

## International



**F**linders showcased its research strengths during three state government

delegations to Singapore, Malaysia, and China - with whom we have a major marine biotechnology agreement.

Below: Professor Leon Lack, wearing Re-time body clock glasses

Highlights



**\$80 MILLION  
RESEARCH  
INCOME**

Total research income exceeded  
\$80 million in 2015

**90%  
ABOVE WORLD  
STANDARD**

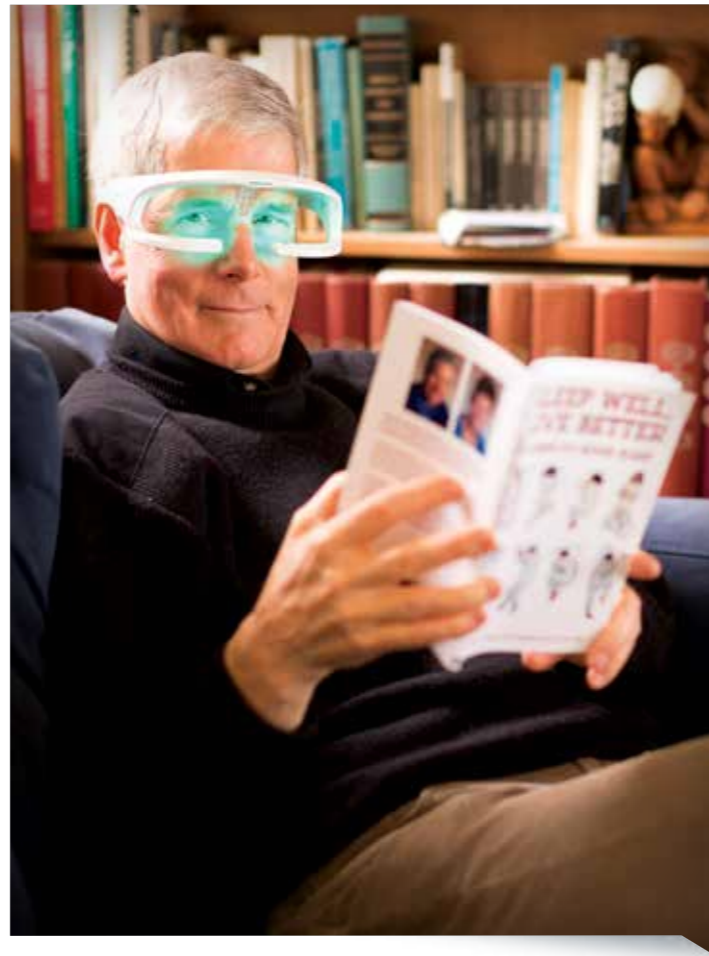
90% of the University's research was  
ranked at or above world standard

in the 2015 Excellence in Research Australia (ERA)  
assessment

**VORTEX  
FLUIDIC  
DEVICE**

Flinders patented the Vortex Fluidic Device

which unravels and rearranges proteins and was  
famously demonstrated by unboiling an egg



*Flinders Partners*

FLINDERS' INTELLECTUAL PROPERTY (IP)  
COMMERCIALISATION ARM, FLINDERS PARTNERS,  
CONTINUED ITS SUCCESS IN KNOWLEDGE  
COMMERCIALISATION.

**W**ith a focus on enterprise and innovation across  
the University, Flinders Partners engages with  
business, industry, government and non-government  
organisations to deliver outcomes that promote  
economic development and change lives for the better.

In 2015 Flinders Partners successfully launched six spin outs  
including Your Amigo (an Artificial Intelligence organic search  
engine), Clevertar (a virtual assistant for health clients), Re-time  
(anti-jetlag and body clock glasses) and Thereitis (interactive  
e-commerce software).



*Changing the research  
funding paradigm*

PROFESSOR COLIN RASTON - SOUTH AUSTRALIA PREMIER'S PROFESSORIAL RESEARCH FELLOW IN CLEAN TECHNOLOGY



**S**ecuring research funding  
continues to be a major  
challenge in the university  
sector.

The changing landscape at the  
federal and state levels, with a greater  
emphasis on engaging with industry, is  
one such challenge, but opportunities  
abound.

However, this may require moving out  
of our 'comfort zone' area of expertise  
into other areas, and indeed creating  
new paradigms. You only get one

research career, so why not? It may  
also require establishing a critical mass  
of researchers with complementary  
research skills to tackle major problems.  
Such collaborative research teams work  
well if it is a meeting of like minds, with  
the passion and vision to move forward,  
taking on a positive stance whatever  
the circumstances, as hard as it is, and  
celebrating the achievements.

Developing a critical mass of  
researchers, for example, can position  
the research team to respond quickly to  
funding opportunities.

Often new funding schemes have short  
time lines, and having a team in place is  
a great start.

Furthermore, involving postgraduates

in multidisciplinary research has  
immediate benefit in exposing them to  
more diverse research, and presents  
a greater opportunity for changing the  
ethos in Australia of career aspirations  
of PhD graduates.

Training on patent law and business  
skills and the like, and encouragement  
and support to create spin out  
companies from their PhD research,  
needs to be an attractive career option  
post-PhD, as well as employment  
in companies supporting university  
research. With quality research training,  
the rest follows – patents, publications,  
networking, spin outs, and more.



## Australia Day Awards

FLINDERS UNIVERSITY STAFF AND ALUMNI WERE AGAIN RECOGNISED FOR THEIR CONTRIBUTION TO AUSTRALIAN SOCIETY IN THE 2015 AUSTRALIA DAY AWARDS AND HONOURS.

### THE ORDER OF AUSTRALIA (AM) WAS AWARDED TO:

Professor **Bogda Koczwara** (Flinders Centre for Innovation in Cancer) – for her significant service to medical oncology through clinical practice, education and cancer research, and through a range of professional organisations.

### THE MEDAL OF THE ORDER OF AUSTRALIA (OAM) RECOGNITION WAS AWARDED TO:

Flinders University graduate and Council member **Leonie Clyne** (Angus Clyne Australia) – for her service to tertiary and vocational education and to business.

Flinders University graduate **Effy Kleanthi** – in recognition of her work with the UN's Development Fund for Women as a social worker and as a Norwood, Payneham & St Peters councillor.

Flinders University graduate **Glen Patten** – for his service to surf lifesaving and nutritional science.

Former Flinders staff member **Dr David Hilliard** – for his service

to education through the study of the history of religion

### A PUBLIC SERVICE MEDAL (PSM) WAS AWARDED TO:

Flinders University graduate **Margaret Carmody** – for her outstanding contributions to improving the lives of people with permanent and significant disability, and her longstanding and distinguished service to public administration in the area of social services.

### THE OFFICER OF THE ORDER OF AUSTRALIA (AO) AWARDS WENT TO:

Emeritus Professor **Kerry Cox** (School of Biological Sciences) – for his distinguished service to tertiary education and university administration.

Professor **Bill Spurr** (Department of Tourism) – for his distinguished service to tourism, education, the arts, sport and the community of South Australia.



## Gender equity for Australian science?

PROFESSOR JUSTINE R. SMITH - ARC FUTURE FELLOW AND RESEARCH STRATEGIC PROFESSOR - OPHTHALMOLOGY



“**W**omen comprise more than half of science PhD graduates and early career researchers, but just 17 per cent of senior academics in Australian universities and research institutes.”

This fact, published at [www.sciencegenderequity.org.au](http://www.sciencegenderequity.org.au), is concerning for multiple reasons: wasted educational investment, substantial loss of expertise in the sector, and limited diversity of the scientific product. Why is it difficult for women to progress a career in science? Family care may be a part

of the answer for some individuals, but there are more significant factors. Studies of unconscious bias show that men and women alike associate men with science, in preference to women. SAGE – ‘Science in Australia Gender Equity’ – is a national program that promises to close gender gaps in STEM. The program was launched at Parliament House in September 2015, as a sister to the Athena SWAN Charter, which has operated in the UK for over 10 years.

Under SAGE, scientific institutions will work towards different stages of award, as they identify and correct gender gaps within their institution. Ultimately, SAGE award status is likely to determine an institution’s eligibility to submit applications to government funding bodies, including the NHMRC and the ARC.

In 2015, SAGE invited competitive applications for a pilot program from Australian universities, medical research institutions and government research agencies. Flinders University enthusiastically applied and was selected to participate in this pilot program. Led by Professor Robert Saint, and supported by Professor David Day and myself, a Self-Assessment Team of committed Flinders University academic and professional staff will spend 2017 and 2018 collecting and analysing gender-focused data sets that describe our faculties. We expect to identify many reasons to celebrate and some deficiencies to address, but we are confident that Flinders University can look forward to collecting its first SAGE Award in January 2019.

Below: Professor Craig Simmons

## Our people

Flinders' success is in our people's success. It is through our graduates, staff and partners that we can claim

to make a significant and meaningful contribution to the economic and social fabric of South Australia and beyond.



## International recognition

ARC Future Fellow and Research Strategic Professor Justine Smith received international recognition with her election to the Academia Ophthalmologica Internationalis (AOI). AOI limits its membership to just 100 holders of chairs in academic ophthalmology from around the globe and is considered to be the most exclusive professional group in the field.

Professor Neil Brewer of the School of Psychology was made a Fellow of the International Association for Psychological Science for his outstanding contributions to the discipline.

Emeritus Professor Norm Feather was awarded the Turner Medal by the Society of Australasian Social Psychologists. The award recognises outstanding lifetime achievement in research in social psychology in Australia.



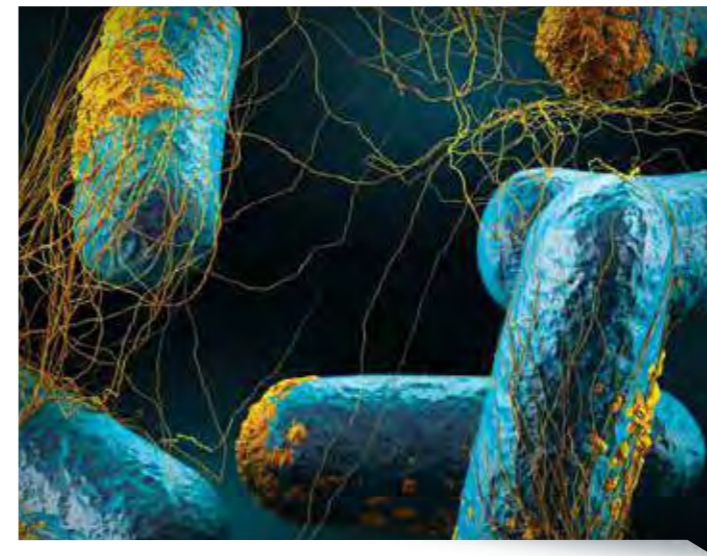
## 2015 Scientist of the Year

Professor Craig Simmons, Director of the National Centre for Groundwater Research and Training, was named the 2015 Scientist of the Year at the South Australian Science Excellence Awards.

Other Flinders winners at the Science Excellence Awards were: nanotechnologist Dr Katherine Moore, who won both the PhD Research Excellence Award and the People's Choice Award; theoretical physicist Dr Maria Parappilly, who was named Early Career STEM Educator of the Year; Dr Scott Groom and Dr Christiaan Ridings, who were winners in the PhD Research Excellence category.

## Unsung Heroes of SA

Flinders scientist and SA Brain Bank curator Robyn Flook won the main prize in the Unsung Heroes of SA Science Awards while nanotechnologist Dr Andy Stapleton was named the Unsung Hero of Science Communication.



## Global scholars

An Endeavour Research Fellowship to Flinders PhD researcher Genevieve Dennison saw her travel to Switzerland to advance her critical work into next generation detection technologies for chemical warfare agents.

Honours creative writing graduate Samuel Williams won a \$180,000 John Monash Cultural Scholarship that will take him to the UK for three years to continue his study of the role of literature in educating young people about gender and diversity. Flinders PhD student Jesse Barker Gale was one of five South Australians to receive a 2016 Endeavour Postgraduate Scholarship to support his research examining the legitimacy of the 'security community' concept in the Asia Pacific.

## Highlights



### AUSTRALIA DAY HONOURS

Eight Flinders University staff and graduates were recognised in the 2015 Australia Day Honours

### 2015 SCIENTIST OF THE YEAR

Professor Craig Simmons, Director of the National Centre for Groundwater Research and Training, was named the 2015 Scientist of the Year

### ACADEMIA OPHTHALMOLOGICA INTERNATIONALIS

Strategic Professor Justine Smith was elected to Academia Ophthalmologica Internationalis (AOI), the most exclusive professional group in the field



“ONCE I GOT HERE AND I REALISED WHAT FLINDERS WAS REALLY ALL ABOUT, I REALISED THIS WAS WHAT I HAD TO DO. EVERYONE IS SMILING AND FRIENDLY – THEY WANT YOU TO LEARN. THERE IS SUPPORT EVERYWHERE, FROM THE LIBRARY TO THE FLO (ONLINE LEARNING) CENTRE TO THE TRANSITION OFFICE. IT’S A GREAT COMMUNITY.” - ADAM ZRIEKA



“SINCE I MADE LOCAL FRIENDS THEY HAVE HELPED ME TO LEARN ABOUT THE LOCAL COMMUNITY, AND MY ENGLISH HAS REALLY IMPROVED TOO. IT’S ALSO HELPED ME WITH MY STUDIES BECAUSE AS A SOCIAL WORK STUDENT I’M VERY INTERESTED IN MULTICULTURAL ISSUES.” - HENRY LIEU

Our Global Network

In 2015 Flinders achieved 20 per cent growth in onshore international commencing students across all four faculties.



Flinders established in-country representatives in Shanghai, Beijing, Guangzhou and Ho Chi Minh City to build on its recruitment efforts in China and Vietnam.



- BRAZIL**  
The Federal University of Juiz de Fora
- CANADA**  
Simon Fraser University
- CHILE**  
Universidad de Valparaiso
- CHINA**  
Capital Normal University  
Central South University  
Chinese Academy of Social Sciences Hunan University  
Nankai University  
Shandong University
- GERMANY**  
Dresden University of Technology
- HONG KONG**  
The Chinese University of Hong Kong  
University of Hong Kong
- INDIA**  
Madras Christian College  
Manipal University
- INDONESIA**  
Universitas Airlangga  
Universitas Gadjah Mada  
Universitas Indonesia
- JAPAN**  
Hiroshima University  
National Institute for Materials Science
- KOREA**  
Kyung Hee University  
Chungnam National University
- MALAYSIA**  
HELP University  
Universiti Kebangsaan Malaysia Universiti Malaya
- MALAWI**  
University of Malawi
- MEXICO**  
The Autonomous University of Queretaro
- NETHERLANDS**  
Utrecht University  
Maastricht University
- SINGAPORE**  
Nanyang Technological University Parkway College of Nursing & Allied Health Social Service Institute (551)
- SWEDEN**  
Malmo University
- THAILAND**  
National Nanotechnology Centre
- UK**  
St George Hospital Medical School University of Leicester  
University of London  
University College London  
University of Stirling
- USA**  
Johns Hopkins University  
University of Arizona  
University of Miami  
University of Texas at Austin



“I DISCOVERED AT FLINDERS THAT THERE WERE A LOT MORE PEOPLE LIKE ME THAN I THOUGHT. I WANTED TO STUDY AND WANTED TO DO SOMETHING IN LIFE THAT I WAS REALLY PASSIONATE ABOUT. HERE I FOUND A LOT OF PEOPLE WHO ARE JUST AS PASSIONATE AS I AM, ABOUT A WHOLE RANGE OF DIFFERENT THINGS, AND THAT HAS BEEN SO POSITIVE FOR ME.” - DANIELLE BOWERING



“FLINDERS’ GREAT AND ENDURING STRENGTH IS IN ITS DIVERSITY OF TEACHING AND PROFESSIONAL EXPERIENCE. I’VE BEEN PRIVILEGED TO RECEIVE A WEALTH OF DIVERSE OPPORTUNITIES AT FLINDERS THAT HAVE CONTINUALLY EXPANDED MY FUTURE PATHS.” - JESSE BARKER GALE



## What's the story?

PROFESSOR JULIAN MEYRICK - STRATEGIC PROFESSOR OF CREATIVE ARTS



evidence-based policy-making, can easily slip down a gear, into value as money. We should all be striving to use limited resources more efficiently, which for a state like South Australia, under-going profound industrial transformation, is a principled aim in itself. But value is about more than economic efficiency. When we ask people to accept fundamental change in their lives, we need to articulate its ultimate purpose. And this vision must be inclusive, convincing, and inspiring. It must be a vision for everyone. Every organisation, be it a business, a university, or an arts company, contributes a part of this vision. Together they point the way forward for South Australia, and the Australian nation of which it is a part.

It is for this reason that my colleagues and I on the Laboratory Adelaide project often say to cultural organisations keen to prove their value in quantitative terms, 'What's the story?' It's the oldest question you can

ask. As the Information Age becomes the Too Much Information Age, narrative not only gives us the ability to manage overwhelming amounts of data. It ensures that the enterprises we are involved with return value to society in the broadest sense, that 'money now' is not the only benchmark for choosing one course of action over another.

Narrative is integral to many areas – history, law, accounting, and, as I have discovered, science. But it has its fundamental anchor in the humanities, which have perfected their storytelling and interpretation skills over millennia. These skills are no longer an adjunct to the 'real' work of the rest of the economy. They are integral to constructing a framework that reins in the numbers and spin and makes sense to ordinary men and women in the street. This is where visions for the future will be won or lost. We are all story-tellers now.

## Important collaborations

A new research project aims to provide a blueprint for better and more sustainable health care provision in South Australia. The project, *Mental Health: Exploring Collaborative Community Reform in South Australia*, will be undertaken by the Australian Centre for Community Services Research at Flinders University in partnership with the Don Dunstan Foundation and the Mental Health Coalition of South Australia.

The University's SHAPE Research Centre is also driving a culture of excellence in South Australian surf lifesaving through the new Surf Sports High Performance Training Academy. The Academy, a partnership between Surf Life Saving SA, Flinders and the SA Aquatic and Leisure Centre, is separated into three tiers: elite athletes, aspiring athletes, and juniors.

## Bob Such Memorial Scholarships

The inaugural Bob Such Memorial Scholarships were awarded to 10 first-year Flinders students.

Funded by the State Government, the University and donations from the community, the \$2500 scholarships provide financial assistance to help young South Australians embark on university study.



Highlights



**BOB SUCH  
MEMORIAL  
SCHOLARSHIPS**

10 first-year students were awarded inaugural Bob Such Memorial Scholarships to help them embark on their university education

**SUPPORT FOR  
CHILDREN LIVING  
WITH AUTISM**

Flinders opened its Inclusive Directions Therapy House, led by Professor Robyn Young giving children living with autism and their families access to an early intervention scheme.

**EXPLORING  
THE WONDERS  
OF SPACE**

Russian cosmonauts Sergey Trescheov and Professor Alex Akulov joined experts from Australia's space industry for the prestigious annual *Investigator* lecture

*Yunggorendi Student  
Engagement*

In 2015 we saw the implementation of a major restructure of the University's approach to Indigenous strategy and engagement. Since 1990, the Yunggorendi First Nations Centre for Higher Education and Research had developed strong visibility as the vehicle through which the University engaged with Indigenous students, staff and community relations. Rebadged as Yunggorendi Student Engagement, it is now complemented by Tjilbruke Teaching and Learning and by a parallel Research stream in a new tripartite model of Indigenous engagement within the office of the Dean of Indigenous Strategy and Engagement, Professor Daryle Rigney.

*Inclusive Directions*

The Inclusive Directions Flinders Therapy House, which opened in Adelaide's southern suburbs, gives children living with autism and their families access to an early intervention scheme based on research led by Professor Robyn Young in the School of Psychology.

*Community  
psychology clinics*

Flinders University continued to provide free psychology clinics to the community in 2015. Clinics were held at Flinders University, GP Plus Noarlunga and Families SA, focusing on areas of specialty including children and adolescents, anxiety disorders, anger management, chronic pain, and family issues. The clinics also act as a vital training ground for budding psychologists while providing a valuable, cost-free service to the local community.



*What makes  
us healthy?*

PROFESSOR FRAN BAUM - SOUTHGATE INSTITUTE FOR HEALTH, SOCIETY AND EQUITY



Many would say "having good health services". Yet at the Southgate Institute we know that while health services are vital, our health actually results from what happens in our everyday lives – the work we do, the food we have access to, the quality of our housing, the extent to which we have supportive networks, and whether we live in a safe and supportive environment. In turn the quality of everyday life is shaped by how power and resources are distributed in society. There's good evidence populations have better health and wellbeing when income is relatively

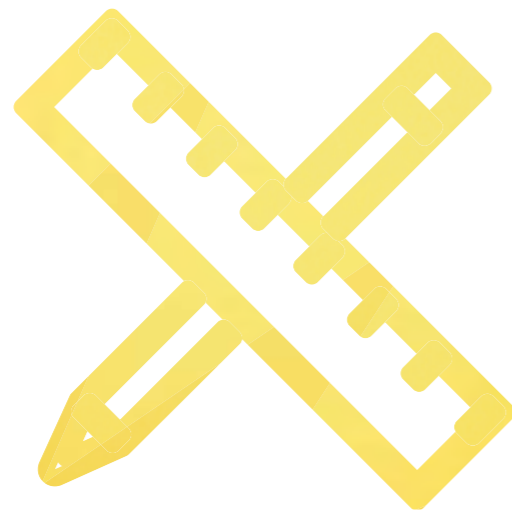
more equally distributed. There's also good evidence that our health status results more from the structures shaping our lives than from our own behavioural choices.

It is a sign of the innovative leadership at Flinders University that we recognise the importance of the social determinants of health, and support research that aims at understanding their power. A major research focus at Southgate is understanding how public policies shape our health and determine which groups are healthiest, and how those who are less healthy can be supported to be more so. We conduct research with Aboriginal and Torres Strait Islander people, refugees, people with low mental health status and low income people. Our focus on health inequities fits well with the social accountability mandate of the School of Medicine.

Our successful bid for a highly competitive NHMRC Centre of Research Excellence on Social Determinants of Health Equity signifies our national leadership in this field. This Centre is examining how public policies affect health and health equity, from primary health care, urban planning, the National Broadband Network, and paid parenting leave, to the Closing the Gap strategy.

Southgate's research is making a difference to policies and practices to help us all have healthier lives.

# Financials



### Governance

**F**linders University is a body corporate established under the Flinders University of South Australia Act 1966 (SA) and is compliant with the Voluntary Code of Best Practice for the Governance of Australian Universities (2011). The University is subject to regulation by the Tertiary Education Quality and Standards Agency (TEQSA) in accordance with the TEQSA Act 2011 and is registered as a self-accrediting institution to 23 May 2020, when it will again undergo a re-registration assessment.

The University's governing Council exercises stewardship of the University's activities and governance framework.

In May 2015, Council approved a new standing committee structure, which resulted in the disestablishment of the Awards

Committee, Governance Committee and Strategic Resources Committee and an expanded terms of reference of the Executive Committee to incorporate the functions of these committees.

The Executive Committee, with its expanded terms of reference, acts as Council's selection committee for appointed members and is also responsible for advising Council on the evaluation of performance and remuneration of the Vice-Chancellor, strategic risks and opportunities and the award of honorary degrees. This Committee retained its existing power to decide urgent matters that the Chancellor and Vice-Chancellor consider cannot be held over to the next regular meeting of Council. The remaining standing committees Academic Senate, Audit Committee, and Finance and Investment Committee continued to support Council to exercise its stewardship over the University.

An externally facilitated review of Council's performance commenced at the end of 2015 and Council will consider the recommendations of this review throughout 2016.

### Risk Management

**T**he University has in place a risk management framework, supported by risk management and legislative compliance policies and regular reporting to Council on work health and safety and other enterprise

risk. Internal audit services were provided to the University throughout 2015 by the professional services firm Deloitte.

During 2015 the University appointed a Director, Integrity, Governance and Risk to manage and integrate the University's legal, governance, risk and compliance functions. Council also approved the establishment of a Chief Financial Officer role to provide strategic leadership and advice to the Vice-Chancellor and Senior Executive on the University's financial risk.

### Insurance of Officers

**T**he University maintains a comprehensive insurance program, which is reviewed annually and includes a Management Liability insurance policy to insure current and former Directors and Officers of the University and its controlled entities. This insurance does not cover conduct involving a wilful breach of duty.

### Environmental regulation and sustainability

**T**he University's Sustainability Action Plan outlines a range of goals, projects and actions that are helping the University become a more environmentally sustainable institution, moving it beyond minimum standards of compliance with a range of State and Commonwealth environmental regulations.

# Financial Performance Statement

# Income Statement



## FINANCIAL PERFORMANCE STATEMENT

	CONSOLIDATED		UNIVERSITY	
	2015 \$'000	2014 \$'000	2015 \$'000	2014 \$'000
<b>INCOME STATEMENT</b>				
Revenue	460,476	442,117	456,040	435,109
Expenses	446,347	429,955	439,503	419,248
<b>Operating Result</b>	<b>14,129</b>	<b>12,162</b>	<b>16,537</b>	<b>15,861</b>
Operating Margin	3.1%	2.8%	3.6%	3.6%
<b>BALANCE SHEET</b>				
Net Assets	660,505	639,612	660,352	638,582
Current Ratio	1.2	1.8	1.3	1.8

In the 2015 financial year the University recorded an operating surplus of \$14.1m (2014 \$12.2m), a slight increase from the previous year. This includes an 11 per cent growth in international student load over the financial year, which is a pleasing result reflecting the benefits of recent investment in this area. This has also helped offset a softening in demand of undergraduate Commonwealth Supported places in the South Australian market.

The University has continued to invest in infrastructure, with the \$63m Student Hub and Plaza development being completed in early 2016. The 2015 financial result includes the first full year of recording depreciation of the \$120m state of the art teaching

and research facility at Tonsley. It also includes the transfer of the Lincoln Marine Science Centre, located at Port Lincoln, to the South Australian Government.

The University continues to have a strong balance sheet with net assets over the financial year increasing to \$660.5m (2014 \$639.6m). Looking forward, the 2016 financial year is expected to be challenging as targeted cost savings are implemented as part of a number of initiatives to reset the University's operating cost base. Strategic investment in priority areas will continue in order to ensure that the University delivers the highest possible quality education, research and engagement activities.

The above Statement of Financial Performance should be read in conjunction with the accompanying notes.

## INCOME STATEMENT

	CONSOLIDATED		UNIVERSITY	
	2015 \$'000	2014 \$'000	2015 \$'000	2014 \$'000
<b>Income from continuing operations</b>				
Australian Government financial assistance				
Australian Government grants	230,381	227,513	230,381	227,513
HELP - Australian Government payments	93,349	89,468	93,349	89,468
State and local Government financial assistance	9,613	9,012	9,613	8,937
HECS-HELP - Student payments	8,111	8,230	8,111	8,230
Fees and charges	82,721	72,236	82,628	72,102
Investment revenue	7,812	9,588	8,505	9,410
Royalties, trademarks & licences	3,049	1,030	2,766	492
Consultancy and contracts	9,152	9,172	8,746	9,123
Other revenue	15,444	15,227	11,514	9,834
Share of profit or loss on investments accounted for using the equity method	417	641	-	-
Other income	427	-	427	-
<b>Total income from continuing operations</b>	<b>460,476</b>	<b>442,117</b>	<b>456,040</b>	<b>435,109</b>
<b>Expenses from continuing operations</b>				
Employee related expenses	293,980	290,176	288,908	284,593
Depreciation and amortisation	29,846	23,080	29,711	22,930
Repairs and maintenance	13,241	12,432	13,215	12,335
Borrowing costs	370	459	370	459
Impairment of assets	305	285	384	282
Losses on disposal of assets	5,998	980	6,001	763
Investment losses	1,359	3,130	1,807	377
Other expenses	101,248	99,413	99,107	97,509
<b>Total expenses from continuing operations</b>	<b>446,347</b>	<b>429,955</b>	<b>439,503</b>	<b>419,248</b>
<b>Net result for the year</b>	<b>14,129</b>	<b>12,162</b>	<b>16,537</b>	<b>15,861</b>
Net result attributable to non-controlling interest	(154)	(54)	-	-
<b>Net result attributable to members of The Flinders University of South Australia</b>	<b>14,283</b>	<b>12,216</b>	<b>16,537</b>	<b>15,861</b>

The above Income Statement should be read in conjunction with the accompanying notes.

# Statement of Comprehensive Income

# Statement of Financial Position



	CONSOLIDATED		UNIVERSITY	
	2015	2014	2015	2014
	\$'000	\$'000	\$'000	\$'000
Net result for the year	14,129	12,162	16,537	15,861
Items that maybe reclassified to profit or loss				
Gain / (loss) on value of available for sale financial assets	7,142	224	5,233	(4,554)
Total	7,142	224	5,828	(4,554)
Items that will not be reclassified to profit or loss				
Gain / (loss) on revaluation of land, buildings, library and artwork	-	(1,940)	-	(1,242)
Total	-	(1,940)	-	(1,242)
Total comprehensive income	21,271	10,446	21,770	10,065
Total comprehensive income attributable to non-controlling interest	(154)	(54)	-	-
Total comprehensive income attributable to the University	21,425	10,500	21,770	10,065
Total comprehensive income attributable to members of The Flinders University of South Australia	21,271	10,446	21,770	10,065

The above Statement of Comprehensive Income should be read in conjunction with the accompanying notes.

	CONSOLIDATED		UNIVERSITY	
	2015	2014	2015	2014
	\$'000	\$'000	\$'000	\$'000
<b>Assets</b>				
<b>Current assets</b>				
Cash and cash equivalents	46,766	27,999	45,576	26,628
Receivables	22,037	23,619	22,072	23,521
Inventories	387	434	241	250
Other financial assets	9,375	49,546	9,375	49,546
Other non-financial assets	8,145	8,121	8,119	8,095
Total current assets	86,710	109,719	85,383	108,040
<b>Non-current assets</b>				
Receivables	48,927	52,005	48,927	52,005
Investments accounted for using the equity method	863	974	-	-
Other financial assets	56,305	49,025	57,622	51,662
Property, plant and equipment	587,098	545,676	586,199	544,719
Investment properties	8,300	9,203	8,300	9,203
Intangible assets	17,762	12,873	16,992	12,069
Other non-financial assets	6,441	6,537	6,441	6,537
Total non-current assets	725,696	676,293	724,481	676,195
Total assets	812,406	786,012	809,864	784,235
<b>Liabilities</b>				
<b>Current liabilities</b>				
Trade and other payables	35,180	28,658	33,325	27,653
Borrowings	1,643	1,549	1,643	1,549
Provisions	23,316	22,811	22,603	22,148
Other liabilities	9,720	8,705	10,722	9,667
Total current liabilities	69,859	61,723	68,293	61,017
<b>Non-current liabilities</b>				
Trade and other payables	4,081	3,787	3,904	3,787
Borrowings	4,193	5,236	3,593	5,236
Provisions	73,768	75,654	73,722	75,613
Total non-current liabilities	82,042	84,677	81,219	84,636
Total liabilities	151,901	146,400	149,512	145,653
Net assets	660,505	639,612	660,352	638,582
<b>Equity</b>				
<b>University interest</b>				
Reserves	150,994	143,852	155,169	149,936
Retained earnings	509,919	495,636	505,183	488,646
University interest	660,913	639,488	660,352	638,582
<b>Non-controlling interest</b>	(408)	124	-	-
Total equity	660,505	639,612	660,352	638,582

The above Statement of Financial Position should be read in conjunction with the accompanying notes.

# Statement of Changes in Equity - for the year ended 31 December 2015

# Statement of Cash Flows - for the year ended 31 December 2015



## STATEMENT OF CHANGES IN EQUITY - FOR THE YEAR ENDED 31 DECEMBER 2015

	RESERVES	RETAINED EARNINGS	TOTAL UNIVERSITY INTEREST	NON-CONTROLLING INTEREST	TOTAL
	\$'000	\$'000	\$'000	\$'000	\$'000
<b>Consolidated</b>					
Balance as at 1 January 2014	145,568	482,722	628,290	282	628,572
Net result	-	12,216	12,216	(54)	12,162
Gain / (Loss) on revaluation of land, buildings, infrastructure, library and artwork	(1,242)	-	(1,242)	-	(1,242)
Transfer from revaluation reserve on sale of aircraft	(698)	698	-	-	-
Gain / (Loss) on revaluation of available-for-sale financial assets	224	-	224	-	224
Total comprehensive income	(1,716)	12,914	11,198	(54)	11,144
Recognition of non-controlling interest	-	-	-	(104)	(104)
Balance at 31 December 2014	143,852	495,636	639,488	124	639,612
<b>Balance at 1 January 2015</b>					
Balance at 1 January 2015	143,852	495,636	639,488	124	639,612
Net result	-	14,283	14,283	(154)	14,129
Gain / (Loss) on revaluation of available-for-sale financial assets	7,142	-	7,142	-	7,142
Total comprehensive income	7,142	14,283	21,425	(154)	21,271
Recognition of non-controlling interest	-	-	-	(378)	(378)
Balance at 31 December 2015	150,994	509,919	660,913	(408)	660,505
<b>University</b>					
Balance as at 1 January 2014			155,732	472,785	628,517
Net result			-	15,861	15,861
Gain / (Loss) on revaluation of land, buildings, infrastructure, library and artwork			(1,242)	-	(1,242)
Gain / (Loss) on revaluation of available-for-sale financial assets			(4,554)	-	(4,554)
Total comprehensive income			(5,796)	15,861	10,065
Balance at 31 December 2014			149,936	488,646	638,582
<b>Balance at 1 January 2015</b>					
Balance at 1 January 2015			149,936	488,646	638,582
Net result			-	16,537	16,537
Gain / (Loss) on revaluation of available-for-sale financial assets			5,233	-	5,233
Total comprehensive income			5,233	16,537	21,770
Balance at 31 December 2015			155,169	505,183	660,352

The above Statement of Changes in Equity should be read in conjunction with the accompanying notes.

## STATEMENT OF CASH FLOWS - FOR THE YEAR ENDED 31 DECEMBER 2015

	CONSOLIDATED		UNIVERSITY	
	2015 \$'000	2014 \$'000	2015 \$'000	2014 \$'000
<b>Cash flows from operating activities</b>				
<b>Inflows:</b>				
Australian Government Grants	318,032	315,833	318,032	315,833
OS-HELP (net)	835	(297)	835	(297)
Superannuation Supplementation	2,848	2,436	2,848	2,436
State Government Grants	11,166	6,599	11,166	6,524
Local Government Grants	12	30	12	30
HECS-HELP – Student payments	8,111	8,230	8,111	8,230
Receipts from student fees and other customers	113,791	105,246	108,458	98,405
Dividends received	1,860	899	1,422	544
Interest received	3,388	7,555	3,369	7,510
Other investment income	3,104	2,438	3,173	2,661
GST recovered	10,037	15,847	10,037	15,847
<b>Outflows:</b>				
Payments to suppliers and employees (inclusive of GST)	(416,743)	(424,664)	(409,909)	(417,650)
Interest and other costs of finance	(370)	(459)	(370)	(459)
<b>Net cash provided by / (used in) operating activities</b>	<b>56,071</b>	<b>39,693</b>	<b>57,184</b>	<b>39,614</b>
<b>Cash flows from investing activities</b>				
<b>Inflows:</b>				
Proceeds from sale of property, plant & equipment	282	770	282	770
Proceeds from maturation of term deposits	40,576	104,908	40,171	104,908
Proceeds from sale of financial assets	1,796	3,815	1,796	3,385
Increase/(Decrease) in funds held on behalf of other entities	170	(24)	170	(24)
<b>Outflows:</b>				
Payments for property, plant and equipment	(76,669)	(140,245)	(76,596)	(140,121)
Payments for financial assets	(2,510)	(4,396)	(2,510)	(3,815)
Loans to related parties	-	-	-	(500)
<b>Net cash provided by / (used in) investing activities</b>	<b>(36,355)</b>	<b>(35,602)</b>	<b>(36,687)</b>	<b>(35,397)</b>
<b>Cash flows from financing activities</b>				
<b>Inflows:</b>				
Proceeds from borrowings	600	-	-	-
<b>Outflows:</b>				
Repayment of finance leases	(1,549)	(1,460)	(1,549)	(1,460)
<b>Net cash provided by / (used in) financing activities</b>	<b>(949)</b>	<b>(1,460)</b>	<b>(1,549)</b>	<b>(1,460)</b>
<b>Net increase/ (decrease) in cash and cash equivalents</b>				
Cash and cash equivalents at beginning of the financial year	27,999	25,368	26,628	23,871
Cash and cash equivalents at the end of the financial year	46,766	27,999	45,576	26,628
<b>Financing arrangements</b>				
Non-cash investing and financing activities	26			
	41			

The above Statement of Cash Flows should be read in conjunction with the accompanying notes.

# The Chancellor's Letter of Transmission

FINANCIALS



His Excellency Honourable Hieu Van Le AO  
Governor of South Australia  
Government House  
Adelaide, South Australia 5000

Your Excellency

I have the honour to present to you the Annual Report of the Council of Flinders University for the period 1 January 2015 to 31 December 2015 in compliance with the Flinders University of South Australia Act 1966, Section 27, and in accordance with a resolution of the members of Council at its meeting on 12 May 2016.

Stephen Gerlach AM  
Chancellor



# Council Members' Attendance

FINANCIALS



	First Appointed	COUNCIL		AUDIT COMMITTEE#		ACADEMIC SENATE#		EXECUTIVE COMMITTEE#		FINANCE AND INVESTMENT COMMITTEE#		GOVERNANCE COMMITTEE#		STRATEGIC MARKETING COMMITTEE#	
		No. of Meetings Held	No. of Meetings Attended	No. of Meetings Held	No. of Meetings Attended	No. of Meetings Held	No. of Meetings Attended	No. of Meetings Held	No. of Meetings Attended	No. of Meetings Held	No. of Meetings Attended	No. of Meetings Held	No. of Meetings Attended	No. of Meetings Held	No. of Meetings Attended
<b>*Mr Stephen Gerlach AM</b> Chancellor (ex officio)	1/03/2010	5	5					5	5			2	2		
<b>*Professor Colin Stirling</b> Vice-Chancellor (ex-officio)	1/01/2015	5	5			6	5	5	5	4	4	2	2	2	2
<b>*Professor Eimear Muir-Cochrane</b> Presiding member of Academic Senate (ex-officio)	1/07/2012	5	5			6	6	5	5			2	2		
<b>*Mrs Leonie J Clyne OAM</b> Appointed member of Council	10/10/2002	5	4					5	4			2	1	2	2
<b>*Mr Douglas Gautier AM</b> Appointed member of Council	19/04/2012	5	4											2	2
<b>Mr Marty Gauvin</b> Appointed member of Council (to 1/12/15)	1/01/2011	4	2												
<b>*Ms Kathryn Gramp</b> Appointed member of Council	1/01/2015	5	3	5	5										
<b>*Mr Stephen Hains</b> Appointed member of Council	1/01/2011	5	4					5	3			2	2		
<b>*Mrs Peggy Lau Flux</b> Appointed member of Council	1/01/2005	5	4							4	4				
<b>*Ms Elizabeth Perry</b> Appointed member of Council	8/08/2013	5	5					5	4			2	2		
<b>*Professor Göran Roos</b> Co-opted member of Council	8/03/2013	5	0												
<b>*Mr Austin R M Taylor</b> Appointed member of Council	1/01/2007	5	4	5	4			5	5						
<b>*Professor Brenda Wilson</b> Appointed member of Council	1/10/2015	1	1												
<b>*Mrs Christine Zeitz</b> Appointed member of Council	15/03/2012	5	4							4	2	2	2	2	1
<b>*Professor Leon Lack</b> Academic Staff member elected by Academic Staff	1/01/2013	5	5												
<b>*Dr Clare McCarty</b> Academic Staff member elected by Academic Staff	1/01/2013	5	2												
<b>*Ms Debra Hackett</b> Professional Staff member elected by Professional Staff	1/01/2013	5	5												
<b>*Ms Pam Smith</b> Professional Staff member elected by Professional Staff	1/01/2015	5	4												
<b>Mr Leon Cermak</b> Elected student member	1/01/2015	5	5												
<b>Mr James Vigus</b> Student member appointed by the Vice-Chancellor	1/01/2015	5	4			6	5								
<b>Ms Karen Patterson</b> Elected student member	1/01/2015	5	5												

^ This table reflects attendance at formal meetings only # Data for Council Members only \* Membership continuing



**Flinders**  
UNIVERSITY

For further information please contact:  
The Office of Communication and Engagement  
E: [comms@flinders.edu.au](mailto:comms@flinders.edu.au)  
W: [Flinders.edu.au](http://Flinders.edu.au)  
CRICOS no: 00114A