



**Flinders
University**

School Students Guide to University

2024



[Flinders.edu.au](https://www.flinders.edu.au)



Study at Flinders

Flinders University is here to help you every step of the way, from exploring your study options, personalising pathway advice, providing support throughout your studies and offering unique opportunities to assist you in becoming career-ready.

Acknowledgement of Country

Flinders University acknowledges the Traditional Owners and Custodians of the lands and waters on which its campuses are located, these are the Traditional Lands of the Arrernte, Dagoman, First Nations of the South East, First Peoples of the River Murray & Mallee region, Jawoyn, Kurna, Larrakia, Ngadjuri, Ngarrindjeri, Ramindjeri, Warumungu, Wardaman and Yolngu people. We honour their Elders past, present and emerging.

Choose your degree

Whether you're set on studying a particular degree or you're still considering your options, planning your future at Flinders is an exciting experience.

It's never too early to start thinking about university and your study options. Here are some tips to help you choose what's right for you.

University applications are due around assessment time, so it's worthwhile making a gradual and informed decision throughout the year. Attend Open Days and meet current students to start exploring your future study areas.

1. Schedule an appointment with a Prospective Student Advisor in the holidays and request a personalised tour of the campus with a current student. Friends and family are welcome to come along with you. Book your tour over the phone, via email or online at: flinders.edu.au/campustour
2. Contact Flinders when you receive your ATAR to discuss preferences and pathway options. To visit our recommended pathway programs please see: flinders.edu.au/pathways
3. Flinders offers a wide range of scholarships to help new students transition to university. Find out more and check your eligibility: flinders.edu.au/scholarships



"I do not want anything to hold me back. I've let things in the past as a young kid, you know, being self-conscious and stuff. But I refuse to do that anymore."

Lucia Franks

Bachelor of Psychology (Honours)



Ranked in top 2% of universities in the world

(THE World University Rankings 2023 as a percentage of the total number of universities in the world according to the International Association of Universities)



No.1 in SA
for learner engagement, skills development and student support

(The Good Universities Guide 2023 (undergraduate), public SA-founded universities only)

Study areas

Business

Business degrees provide you with the general skills and knowledge necessary to pursue a successful career in business. You'll study topics in the core areas of accounting, marketing, management, law, economics, human resources management, and innovation and enterprise. You can choose to focus your studies on a specialisation, for example Accounting, Banking and Finance, Human Resource Management, International Business, Management, Marketing, Sports Management, Business Economics, Commerce, Finance, or International Business in Wine, Spirits and Tourism. You'll develop real-world work experience and build networks through work placements and live industry projects.

Creative Arts

Whether you're preparing to take centre stage, direct or produce an internationally acclaimed feature film, stitch and style your way to success, or write an award-winning play, Flinders Creative Arts and Media will help you realise your ambitions. You'll be taught by practising creative artists who are award-winning authors, playwrights, actors, cinematographers, creative entrepreneurs and leaders in the arts industry. Study in a range of areas including Costume Design, Creative Writing, Dance, Digital Media, Drama, Fashion, Festivals and Arts Production, Film and Television, Interactive Design, Screen, Theatre and Performance, Visual Arts, Visual Effects and Entertainment Design and Writing and Publishing.

Criminology

Criminology is the study of the causes, impact and prevention of crime, and the institutions involved in responding to criminal conduct. You will learn criminology theory and its applications in policing, corrections, criminal process, victimisation, miscarriages of justice, organised crime, and corruption. Practical focussed topics will equip you for employment in intelligence analysis, community corrections, community development, and child safety work.

Education

Our Education degrees include many opportunities to step into early childhood settings (including kindergarten, early learning and child care services), primary and high schools. Experience day-to-day life as an educator: plan lessons, build relationships with your students, and put your passion to work. With such a broad foundation of knowledge, you'll be prepared for a range of professional education roles.

Engineering

Engineers are in high demand world-wide. Flinders Engineering degrees are offered in close collaboration with industry, giving you specialist knowledge and an integrated 'toolkit' of skills that will enable you to meet global requirements as they continue to change. Flinders engineering courses have a common first year which enables you to get a taste of engineering disciplines and delay your choice of specialisation until you have experienced engineering as a whole, or transfer between courses if you change your mind. You'll take part in a nationally recognised 20-week industry placement program and network with industry leaders, mentors and businesses who will prepare you for the workplace. Our graduates leave with professional accreditation and all engineering degrees can be combined with design, technology or innovation topics to give you the skills for an ever-changing world. You'll be able to focus your studies in Biomedical, Civil, Electrical and Electronics, Environmental, Maritime, Mechanical, Robotics and Software Engineering - also offering multiple majors, so that you can further specialise in areas to suit your passion.

Health

With a Health degree, you can make a meaningful difference to people and communities throughout the world. There are many opportunities in this large and ever-evolving field. You'll graduate well equipped to face the health challenges of the future. Many of our health degrees are nationally accredited and offer flexibility so you can carve out your unique pathway. Gain the skills to make a difference to people's lives and address the future health needs of Australia and the world. Our many electives, degrees and pathways give you the flexibility to follow your passion with industry experience. Our courses include Clinical Exercise Physiology, Community Inclusion, Disability and Developmental Education, Exercise Science, Health Sciences, Occupational Therapy, Physiotherapy, Nutrition and Dietetics, Paramedic Science, Public Health, Optometry, and Speech Pathology.

Humanities and Social Sciences

Our degrees provide you with valuable, transferable skills to adapt to the incredible transformations taking place in the professional world. You can design your degree to suit your interests and aspirations by choosing from a diverse range of disciplines. Our humanities and social sciences graduates are talented leaders in creative arts, business, politics and government. Challenge yourself with our arts degree for high achievers or find your own path to success with exciting placements, internships and flexibility to design a degree based around your interests. Choose from a range of disciplines to expand your career options in areas such as Archaeology, History, Philosophy, Politics, and Sociology.

Computer Science and Information Technology

Our Computer Science and Information Technology degrees prepare you to solve problems across a range of fields. The technology industry is an exciting innovator and key player in business, commerce, defence, medical research, climate change and the environment. Tailor your studies to suit your interests, whether you're building systems that have humanlike intelligence, driving innovation for Industry 4.0 or developing the apps that will transform the future. Specialisations include Network and Cybersecurity Systems, Artificial Intelligence and Game Development. To ensure you are job ready, you'll take part in a nationally recognised 12 to 20-week industry placement program and network with Academics, mentors and businesses who will prepare you for the workplace.

International Relations and Political Science

Our degrees give you a range of tools to understand and drive political, social and economic change. You will learn how political, social, economic, and strategic relations work within the global community and how these translate into policy areas such as trade, economic development, tourism, foreign affairs, education, migration, human rights and environmental protection. You will learn how policies are developed and implemented, preparing you for careers in government, private global industries and not-for profit organisations in Australia and abroad.

Languages and Culture

Studying Languages and Culture at Flinders gives you the chance to develop a broad range of skills and knowledge. Whether your interests lie in language, media, archaeology, theology or tourism and events, you'll gain transferable skills and industry experience that will help you throughout your career and let you explore your passions and the world we live in. Extend your previous foreign language studies or learn a new language in French, Indonesian, Italian, Modern Greek or Spanish at Flinders, or one of our cross-institutional partnerships to study Chinese, German or Japanese.

Law

Law brings hope to the disadvantaged, confidence to commercial ventures, rigour to politics and solid foundations to launch your career in a diverse range of fields. A law degree also opens the door to careers outside of the law including banking and finance, environmental protection and development, politics, marketing, communications, business management and leadership. Our law topics are focused on 21st century lawyering and include criminal law, contracts, torts, real property, evidence, international law and law in a digital age. You will develop high level communication, presentation and teamwork skills in preparation for practising law, or for future leadership roles in a range of educational and professional settings.

Medicine

Medicine is the science and art of treating diseases and maintaining health. The Bachelor of Clinical Sciences/Doctor of Medicine enables school leavers to pursue a career in medicine, and equips graduates with the skills to take up positions as hospital interns and thereby qualify for medical registration in Australia. Flinders also offers Medicine at a Postgraduate level. Some recommended pathways include Medical or Paramedic Sciences. The Bachelor of Medical Science covers areas such as biochemistry, biotechnology, microbiology, molecular biology, neuroscience and a new specialisation in Laboratory Medicine. The Bachelor of Paramedic Science is an approved degree for anyone seeking a career as a paramedic or a research career in pre-hospital science.

Nursing

The Bachelor of Nursing (Pre-registration) will equip you with the skills you need to play an important role in health promotion, maintenance and education, as well as in traditional patient care and the restoration of health. Our focus is to develop you into a Registered Nurse who is reflective about their practice, has well-developed clinical reasoning skills and a commitment to lifelong learning. Nursing graduate positions are available in a range of areas including medical/surgical, emergency, mental health, aged care and community health and general practice.

Midwifery

The Bachelor of Midwifery (Pre-registration) will equip you with the essential skills required to provide high quality, safe and effective woman-centred care. With a focus on the principles of primary health care and continuity of care, you will develop an understanding of various midwifery models to enable you to apply theory and skills in your daily practice. Midwives provide safe, effective care that recognises women's individual needs of choice, control and continuity of care. Upon completion, you will be capable of providing care to women through their experience of pregnancy, labour and the early postnatal period in community and hospital settings.

Psychology

Understand the way we see the world and help to make a positive impact. Psychology helps us understand our mental health and how people think – how we feel and why we behave the way we do. Psychological skills are used in almost every industry, and given the ongoing changes to the ways we live, work and interact, are sure to play a major role in the workplaces of the future. In many of our Psychology degrees, you'll have the opportunity to combine your study or choose electives to improve your employability and broaden your knowledge.

Science

Science at Flinders allows you to tailor your study to suit your passion and career aspirations. Our science degrees enable you to follow your interests without being confined by traditional boundaries in core sciences such as Biology, Chemistry, Physics and Mathematics. We also specialise in Biodiversity and Conservation, Biotechnology, Chemical Sciences, Physics, Forensics and Analytical Science, Marine Biology, Geographical Information Systems, Palaeontology, Nanotechnology, Animal Behaviour or Environmental Science. All our degrees have embedded activities such as placements or projects with industry, to ensure you are job ready and well prepared for the workplace.

Social Work

Flinders Social Work provides career-ready skills and knowledge to those people who are driven to create a society that is fair, supportive, and inclusive. Social Work careers are not for the faint-hearted, but they are incredibly important and in high-demand. Social Work graduates work in government departments, hospitals, health and community centres, welfare agencies and many other organisations across the world. Social Work graduates make a difference, and Flinders Social Work degrees provide hands-on study and real-world placements to ensure our graduates are prepared for a challenging, rewarding career.

Sport

Our courses are designed to give you a competitive advantage enabling you to work at the highest possible level, wherever you go. Our Sport degrees provide you with an understanding of the significance of sport and physical activity within the context of a healthy lifestyle and provide opportunities to focus your studies on Clinical Exercise Physiology, Exercise Science, Outdoor Education or Sports Management. Our network of industry leaders and our placement opportunities will provide you with real industry experience and connections while you study, helping you build your sports career and realise your ambitions.

The Flinders Student Experience

There's more to Flinders than our friendly reputation. It's true that we value our people, and our students agree that we offer the best student experience and support in SA. But The Flinders Experience is about having the space and flexibility to choose your path, and the confidence to build your own future. Our industry-driven degrees and support services will help you on your way to a satisfying career and beyond.

There's no limit to what you can achieve with a Flinders degree, because our internationally recognised teachers, state-of-the-art facilities and research that makes a difference are here to inspire you to be the best you can. Explore your passions, experiment bravely and make your mark.

FUSA

Flinders University Student Association (FUSA) is the student organisation that represents the rights and interests of students: you! FUSA runs both social and advocacy services for students including academic advocacy, financial advocacy and other support, as well as housing the Student Council and looking after all of the non-sporting Clubs and Societies on campus. FUSA are responsible for the social events on-campus, including O'Week events, picnics in the Plaza, free brunches, and various campus activations.

Clubs

Whether you want to try something new, stay involved with an old hobby or find a community, Clubs and Associations are a great way to connect with like-minded people while you're studying. They allow you to expand your social circle, develop your professional skills, or simply catch up with friends. With over 80 different clubs, including academic associations, social or special interest clubs, whatever your interests, Flinders is bound to have a club for you.

Sports Clubs

We have over 20 different affiliated sporting clubs. Our clubs cater for all levels of ability or interest by offering recreational, instructional or competitive settings. Joining a sporting club here on campus is a great way to add your University experience and meet new people along the way, all whilst being physically active. Sporting clubs include soccer, basketball, Ultimate Frisbee, fencing, korfbal, netball, Muay Thai, Underwater (SCUBA), and squash.

Study Abroad

Living and studying overseas presents you with the unique opportunity to immerse yourself in the local culture while continuing your tertiary study at one of Flinders University's 70+ overseas partner universities.

We provide students with global learning opportunities, such as semester exchange, short-term study programs and internships. Global study programs are designed to allow students to take their Flinders study overseas and earn academic credit toward their Flinders program. Why wait until you graduate to see the world? Let our program offer you the educational adventure of a lifetime.

finders.edu.au/studyabroad

Student Learning Support Service

The Student Learning Support Service (SLSS) helps students achieve academic success through the development and implementation of innovative, proactive, and 'just-in-time' study support programs, resources, and interventions. The Learning Lounge is a safe study space for students on campus (located in the Central Library), staffed by learning advisors on weekdays. Learning advisors provide guidance on matters including academic writing, understanding assignment requirements, referencing, numeracy, and other general study skills. Studiosity is an online 24/7 service for students to receive writing feedback on assignment drafts, as well as a live chat function for support with English, maths, science and general study skills.

Health, counselling and disability services

Managing your health while studying is important. We have facilities and services available to help you look after your physical and mental health. Flinders provides confidential and professional health, counselling and disability services to all currently enrolled Flinders University students. We can also assist students with equal opportunity concerns.

The Health Service is a fully equipped Medical Centre located at the Bedford Park campus. It provides emergency and routine medical care and is staffed by both male and female medical practitioners. All consultations are confidential and there is also a free counselling service.

Flexible study options

Many Flinders courses offer you flexible study options, including part-time and online options. Flinders online courses provide a convenient and flexible way to achieve your study and career ambitions. You'll receive the same quality education and qualifications as on-campus students with dedicated support available throughout your entire degree.

Students on-campus also have flexibility with online lectures, choosing your own timetable and face-to-face as well as online support services available.

finders.edu.au/online

Study abroad



Careers

The Careers and Employability Service helps give you the edge in your career.

The Centre provides a diverse range of services and programs to help students:

- Plan their career
- Broaden their skills and experience
- Connect with employers and industry professionals
- Find job opportunities
- Prepare for employment

Work Integrated Learning

At Flinders we are committed to the success of our students. Our graduates are highly sought after by graduate employers and our work integrated learning (WIL) programs combine academic and career related activities designed to enhance learning. Flinders students are able to make industry connections and enhance their skills and experience through workplace and internship programs in Australia and overseas. WIL can be in the form of:

- work placements such as; clinical placements, internships, field education, vocational and professional practice
- projects with industry and community organisations.



"If I had the chance to do this again, I would... you will make new friends, experience different cultures, see Washington up close, and develop all the skills necessary to help you gain employment post-study."

Kyle Whenan

Bachelor of International Relations and Political Science, 2022 Washington Internship Program

Empire Times - FUSA



Sports Clubs



Student spaces

Student Hub and Plaza

The Student Hub is a state-of-the-art facility designed in close collaboration with current students who ensured it would meet their needs.

With student study spaces accessible 24/7, an outdoor amphitheatre and super screen, centralised student services and numerous eateries and function spaces, Flinders students can get the most out of their on-campus university experience.

flinders.edu.au/studenthub

Tonsley

The Tonsley campus centrally locates computer science, engineering and mathematics students. It is home to the Medical Device Research Institute, Centre for Nanoscale Science and Technology, Tonsley Innovative Manufacturing Hub and some of Adelaide's biggest businesses and industries.

flinders.edu.au/tonsley

Victoria Square

Located in the heart of the Adelaide CBD, Flinders at Victoria Square is an accessible, alternative and flexible space for students. A selection of courses and topics are taught in this space and Flinders students can access fully equipped, private study spaces.

flinders.edu.au/victoriasquare



Artists impression - Flinders at Festival Plaza

Flinders at Festival Plaza – opening 2024

Flinders University students want flexibility, convenience and connectivity. That's why we're taking our presence in the Adelaide CBD to a whole new level. As an anchor tenant in the new Festival Plaza development on North Terrace, Flinders will offer new courses and new career pathways in a new city campus.

flinders.edu.au/festival-plaza

Tonsley campus



Bedford Park campus



Flinders living

At Flinders Living, we understand that moving away from home or starting at a new university can be both exciting and a little daunting, which is why we do everything we can to support our students to settle in quickly. Our staff and student leadership teams aim to make University Hall and Deirdre Jordan Village great places to live, learn and grow. Because our Flinders Living residents are so close to everything that Flinders has to offer, they are more actively engaged in campus life and community. This positively impacts the likelihood of our students completing their study and achieving higher academic outcomes.

What are my accommodation options?

There are a variety of accommodation options available at Flinders Living to suit your needs. Accommodation is available in our self-contained units in Deirdre Jordan Village or in University Hall, our catered hall of residence.

Why live on-campus at Flinders University?

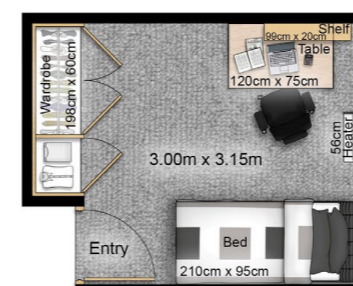
- Be a part of living and learning environments that celebrate diversity and show respect and consideration for others.
- Walking distance to classes at Bedford Park and Sturt campuses with easy access to public transport and Flinders loop buses to Tonsley.
- Free membership of Flinders Sport and Fitness and easy access to music facilities, library and computer labs.
- A safe and secure environment with access to University Security and student welfare support, 24-hours per day.
- Affordable living with all utilities and free Wi-Fi access included.

University Hall

University Hall is our catered, collegiate hall of residence. We recommend students who are transitioning into higher education soon after high school, choose the more collegiate and supportive environment of the Hall for their first year experience, before considering moving to the Village for a more independent lifestyle in later years. You will be provided with easy access to academic and wellbeing guidance through a team of student leaders living on site. In addition, the elected House Committee strengthens the sense of community through the organisation of many intercollegiate sporting competitions and a wide range of social and cultural events.

Overview

- Single rooms fully furnished (single bed, mattress and mattress protector, desk, wardrobe, heating and fan)
- Shared common areas and kitchenettes
- Catered from Monday to Friday for breakfast, lunch and dinner
- Free on-site communal laundry and enclosed drying areas



Example of single room in University Hall



Deirdre Jordan Village

Deirdre Jordan Village features 80 fully equipped, self-contained units accommodating 309 students. This enables you to enjoy an independent lifestyle within a vibrant and supportive community. The Village features outdoor recreation spaces including three barbecue areas and a modern community centre with a large common room, seminar rooms, a music room and decking with sea views. Each of these self-contained units include a common living and dining area, full kitchen, bathroom, and bedrooms for 2-6 students.

Overview

- Single rooms fully furnished (single bed, mattress and mattress protector, desk, wardrobe, heating and fan) in self contained units with shared communal living spaces in each unit
- Self catered
- Each unit has a full size kitchen with oven, microwave, fridge, freezer, toaster and kettle
- Free on-site laundry and enclosed drying areas plus washing machines in all 2 and 3 bedroom units

Fees

2022 indicative weekly room rates are (depending on exact room):

Uni Hall: \$362-402 per week

Deirdre Jordan Village: \$250 per week

Applications

Applications for Flinders Living are made online.

Apply by closure date in November. Housing offers are normally made over December/January. You will need to submit the application form, a personal statement about yourself and a non-refundable application fee.

More information on fees and application:

flinders.edu.au/living



Example of unit in Deirdre Jordan Village

Year 12 entry to a Flinders Degree

Flinders University offers a range of pathways for you to apply for entry to your preferred degree. You will be considered for an offer based on your most competitive selection rank, which may be your Australian Tertiary Admissions Rank (ATAR) plus any applicable adjustment factors, an admission test result or TAFE/ VET qualification. Alternatively, you may be considered via one of Flinders' multiple entry pathways.

Year 12 entry

The majority of Year 12 applicants enter university via the traditional competitive entry method, where offers are made to eligible applicants with the highest selection rank until all places in the degree are filled. Your selection rank is based on your ATAR plus any adjustments for which you are eligible.

flinders.edu.au/year12entry

Research Project B

If you perform well in the Research Project B subject you could be considered for entry into selected Flinders degrees on the basis of your grade. Your score will be automatically weighted and considered in your SATAC application.

flinders.edu.au/researchproject

uniTEST

As a Year 12 student, the Flinders uniTEST Pathway is available to enhance your chances to gain a place in your preferred Flinders degree. If you take the test and don't do so well, don't worry, we will still consider your application on your other selection ranks. Your uniTEST results are applicable to all Flinders undergraduate degrees (excluding Bachelor of Clinical Sciences/ Doctor of Medicine).

flinders.edu.au/unitest

Elite athlete admission scheme

our Elite Athlete Admissions Scheme provides a pathway to university study for elite sports people. If you've officially represented your school or state at a national level competition, we'll consider your school's recommendation about your academic potential when you apply. For consideration, complete an online application direct to Flinders University in addition to your SATAC application.

flinders.edu.au/eliteathlete

Indigenous admission scheme

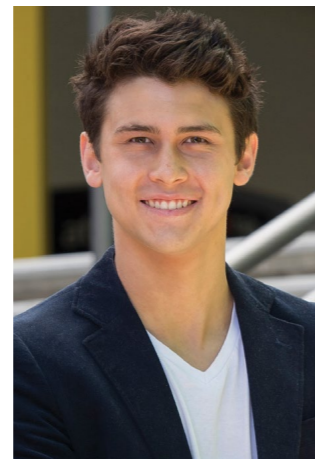
the Indigenous Admission Scheme recognises that Indigenous Australians do not always have the opportunity to gain entry to university via traditional pathways. To apply and to find out more, phone (08) 8201 3033 or download the application form.

flinders.edu.au/study/pathways/indigenous-admissions-scheme

School recommendation program

your performance in Year 12 is not always a true indicator of your ability to succeed at university. Flinders will consider your school's recommendation about your academic performance and potential for university study for admission to selected Flinders degrees. For consideration, submit an application form direct to Flinders University in addition to your SATAC application.

flinders.edu.au/school-recommendation



"Sitting the uniTEST was good practise for exams and quite an experience. The test itself wasn't too bad, just general questions based on a passage or it may ask you to identify the next shape in a pattern. The uniTEST ended up working well for me, I scored a decent result and it definitely took some pressure off my shoulders when it came to exams."

Robert
Brighton Secondary School
Commerce student

Post-school pathways

Foundation studies

The Foundation Studies program has been designed to introduce you to university study in a supportive learning environment. Open to people from all backgrounds, Foundation Studies provides a pathway to gain entry to most degrees at Flinders and offers guaranteed entry into some degrees. Foundation studies. This program is not available to students enrolled in Year 12 studies (South Australian Certificate of Education (SACE) or equivalent) or to students enrolled below Year 12 studies; or to those who were eligible to be enrolled in Year 12 studies in the year they wish to commence this program.

Intensive

5 weeks full-time

The 5-week intensive course allows you to fast-track your university entry with 2 hours in class (online or on campus) during business hours plus 4 hours of independent study each day.

Standard

4 months or 7 months

Flinders Foundation Studies offers a 4-month and a 7-month course that gives you plenty of time to study around your lifestyle. On completion, you'll be ready to start your new degree at Flinders in 2025.

flinders.edu.au/foundation

Foundation Studies Options



Fast-tracked 5-week intensive option

Free*
Online or on campus
All classes during business hours
Start 9 January 2023
Start your degree in February 2024

Standard 4-month option

Free*
Online or on campus
Classes during business hours
Start in February or July
Start your degree in July 2024

Standard 7-month option

Free*
Online or on campus
Evening classes
Start in February
Start your degree in 2025

TAFE SA dual offers

You can apply for a TAFE SA* diploma or advanced diploma that is linked to a Flinders degree. You'll receive an offer to both TAFE SA and Flinders University and on successful completion of the TAFE course, you'll have secured an offer for a Flinders degree. TAFE SA dual offers are available for a range of Flinders degrees.

*TAFE SA RTO Code: 41026

flinders.edu.au/dualoffers

Tafelink

Flinders offers guaranteed entry to selected degrees for applicants who have completed a TAFE/VET certificate IV or higher level qualification, as long as degree prerequisites are met. Importantly, your TAFE/VET qualification does not need to be related to your selected area of study at Flinders.

flinders.edu.au/tafelink

Special tertiary admissions test (stat)

The STAT is a two hour test consisting of 70 multiple choice questions. It's designed to assess a range of abilities and competencies considered important for successful university study. You must be 18 as of 1 February the year you intend to begin university study to be eligible. Apply to sit the test via ACER.org.au, in addition to your SATAC application. STAT scores can be used for entry into most Flinders courses.

flinders.edu.au/stat



"I wanted to go to uni, but I did have a few muck-ups in year 12 which meant I couldn't receive an ATAR. I was looking for different ways to get into uni and that's when I discovered the Foundation Studies course."

Makaylah

Foundation Studies Graduate
Current Bachelor of Creative Industries
(Film & Television) student

Understand the selection process

The majority of Year 12 applicants enter university via the traditional competitive entry method, where offers are made to eligible applicants with the highest Selection Rank until all places in the degree are filled. Your Selection Rank (SR) is based on your ATAR plus any adjustments for which you are eligible.



Adjustment Factors

Previously known as bonus points, adjustment factors contribute to your Australian Tertiary Admission Rank (ATAR) when applying for Flinders University degrees.

The two schemes detailed below are administered by the South Australian Tertiary Admissions Centre (SATAC).

Universities equity scheme (5 points)

The University Equity Scheme provides points in one of two ways: school based or individual. Eligible students will receive five points.

School-based

If your school is recognised by SATAC as an eligible school, these points will be automatically applied. Check to see if your school is eligible at flinders.edu.au/adjustmentfactors

Individual

If your school is not automatically recognised under SATAC's Universities Equity Scheme you may apply for these points at the time of your SATAC application if you meet any of the criteria below:

- You or your parents are in receipt of a Commonwealth means tested income support payment, or
- You or your parents are the holders of a Health Care or Pensioner Concession Card, or
- You are the holder of a School Card.

Universities language, literacy and mathematics scheme (2 or 4 points)

This scheme encourages students to strengthen their preparation for undergraduate studies by undertaking selected subjects in Year 12.

In this Scheme, applicants will be awarded two points per subject (up to a maximum of four points), for successfully completing a SACE subject in any of these four categories:

- 20 credits of a LOTE in the Languages Learning Area.
- 2ESH20 English or 2ELS20 English Literary Studies.
- 2MHS20 Mathematical Methods.
- 2MSC20 Specialist Mathematics.

These adjustment factors will apply for all Flinders undergraduate degrees with the exception of the Universities Language, Literacy and Mathematics Scheme which will not apply to 214941 Bachelor of Clinical Sciences/Doctor of Medicine.

Selection Ranks

Minimum selection rank

The 2022 selection rank shown for each degree indicates the lowest rank for which an offer was made for each degree (including any adjustments). It is provided only as a guide for 2023 entry as it may change from year to year. This is shown in the table as '2022 Selection Rank'.

Guaranteed entry selection rank

Achieve a Selection Rank equal to or above the published Guaranteed Entry Selection Rank and you will be guaranteed a place at Flinders. All you need to do is ensure you have listed your preferred Flinders degree as your first preference and you will be offered a guaranteed place provided you meet any other course pre-requisites. This is shown in the table from page 16 as 'Guaranteed Entry Selection Rank'.

flinders.edu.au/selectionranks

Finding Flinders

Walk, ride or drive to Flinders

Walking

Walking is a healthy option for those who live in nearby suburbs. Designated walking paths link the three major hubs on campus: Sturt precinct, main precinct and the Medical Centre.

Pedestrian paths and walking trails

Shared pedestrian and bike paths lead onto the campus from Bellevue Heights, University Way and Sturtbrae Crescent near Sturt Road. There are pedestrian paths on all main roads that lead to the campus, with islands and crossings designated for safety. There are also walking trails on campus for you to enjoy.

Cycling

Flinders is a cycle-friendly University, with a large community of students and staff who regularly ride to campus. With designated cycle lanes, eight sets of bike rails around campus, plus three lockable bike storages, Bedford Park is the perfect destination for cyclists. There are also plenty of showers and change rooms available across campus. Plan your cycling journey, download cycling maps or find out more at: flinders.edu.au/cycling

Carpooling

Carpooling is a great way to share your journey and benefit by sharing the cost with friends while minimising your carbon footprint.

Parking

Flinders University has safe and secure car parks available throughout the campus for students, staff and visitors. There are many permit and casual parking options available on campus to suit your individual needs. Casual parking can be pre-paid through CellOPark, or on the day via visitor parking machines on campus.

Find out more at: flinders.edu.au/campus/bedford-park/parking

Powerful Parking

A new, sustainable covered car park has been built on campus. With approximately 4,200 solar panels, it is one of the state's largest solar arrays, pulling enough energy to cover almost 20 per cent of the University's overall power needs. We have also introduced electronic signage and an app that will let you know how many parks are available across campus and where they are.

Flinders Station

Flinders railway station makes travel to and from the University quick, easy and accessible.

The \$141m Flinders Link Project celebrated the opening of Flinders Railway Station early in 2021, bringing a fast and convenient connection to the heart of Adelaide's city centre, just 22 minutes away.

Flinders Railway Station gives you easy access to Bedford Park, Flinders' main campus. The platform features an enclosed, elevated platform connecting the station directly to Flinders Medical Centre.

Even closer to the CBD, the new Tonsley Railway Station offers improved access to the Tonsley Innovation District.

The Flinders Link Project allows you to easily travel to and from Bedford Park to Tonsley and our Victoria Square campus in the CBD.

Plan your journey

Use the 'plan my journey' function at the Adelaide Metro website to find the best way for you to get Flinders: adelaidemetro.com.au

The Adelaide Metro website has timetables, which you can also pick up on-campus at the Union Hub (Sturt), Central Library, and Flinders Post Office.

Buses

The main buses that service Bedford Park campus are:

101	Arndale Centre Interchange to Flinders University
300	Suburban Connector Glenelg, Henley Beach and Grange via Arndale Centre Interchange
601	Old Reynella Interchange, Aberfoyle Hub and Blackwood Interchange to Marion Centre Interchange
681	Hallett Cove Beach Station to Flinders University
719	Flinders University to city
G10	Marion Centre Interchange, Bedford Park, Colonel Light Gardens and city to Blair Athol
G40	Golden Grove Village Interchange and Tea Tree Plaza Interchange to Flinders University

Trains

The main trainline to Flinders is the city to Flinders service. For those who live to the south of Bedford Park, the Seaford to city service can be caught and the following connecting services taken:

- 681 bus a short walk from Seacliff railway station
- 300U bus a short walk from Oaklands railway station

Journey times

Journey times from the city to Flinders can range from 20 to 45 minutes with express buses available.

The average journey time from the city to Flinders by train is 22 minutes.

Getting around Flinders

There are a variety of transport options to help you make your way around campus.

Loop bus

The University loop bus is a free service that links the main University campus, Sturt and the Flinders Medical Centre (FMC) bus interchange. Buses normally arrive every 20 minutes and run from 8.15am to 6:00pm during semester time (including exams). An evening service connects Flinders to nearby suburbs every 45 minutes from 6:00 to 9:45pm.

A free Tonsley loop bus also runs between Tonsley and Bedford Park every half hour from 7.00am to 6.00pm, Monday to Friday.

Access cab

A free access cab is available for transporting students and staff within University grounds.

It can carry one wheelchair and three passengers at a time and meets SA Transport Board requirements.

Scholarships at Flinders

With over 450 scholarships worth \$2.4M in total and ranging from \$1,000 – \$20,000, Flinders can help you make the most of your university experience.

The Flinders University scholarships program includes a generous range of scholarships available for new and continuing students in undergraduate courses.

In particular, Flinders University provides scholarships to students from low socio-economic backgrounds, students from rural and regional areas and Indigenous students. Flinders University also has strong links with TAFE SA and other educational bodies, and offers specific scholarships to support transition from TAFE and VET programs into higher education.

flinders.edu.au/scholarships

Which scholarships can I apply for?

Search for scholarships applicable to you by using the filter options in our scholarships search engine at: **Current students > Scholarships > Search for scholarships**

Make sure that you check the full eligibility rules before applying.

How do I apply?

1. Access student system

You can apply online once you have enrolled in your Flinders course:

- Log in to your Flinders dashboard (Okta) using your FAN and password
- Click the Student System button
- Select the 'My Scholarships' tab

2. Apply for the scholarship

Apply for all the Flinders undergraduate scholarships or groups of scholarships applicable to you.

3. Submit your application

Ensure that you upload all necessary supporting documentation before submitting your application. All scholarship applicants are notified of the outcome of their application via their Flinders University email address.

Go to **Current students > Scholarships > How to apply**

When do applications for undergraduate scholarships close?

Most undergraduate scholarships are open for application from December and close in the period from January through to March. Some scholarships open and close later in the year, so check individual scholarship details on the Flinders website. Go to **Current students > Scholarships > Search for scholarships**

Can I defer my scholarship?

Undergraduate scholarships are not deferrable.

Can international students apply for scholarships?

The scholarships featured in this guide are for domestic students only. Some scholarships are available for international students, usually requiring an application before arrival in Australia. For information about international student scholarships, select 'Scholarships specifically for International students' in our online search engine at **Current students > Scholarships**

Are there other scholarships, external to Flinders University?

Yes, check the full range of scholarships listed on the Flinders website. Some scholarships require an application to an external organisation. You may also wish to use external databases such as gooduniversitiesguide.com.au/scholarships to search for further scholarships.

Can I apply for more than one scholarship?

You would normally only receive a maximum of one scholarship, however you are encouraged to apply for all scholarships or groups of scholarships for which you are eligible.

How do I demonstrate financial hardship?

A number of scholarships require evidence of financial hardship. Your recent Centrelink statement will be required to prove financial hardship. If you are not in receipt of Centrelink payments, you will need to complete a Financial Hardship Form and submit it to Student Finance Services. The Financial Hardship Form is available at **Current students > Scholarships > Forms**

Can I receive my scholarship for part-time study?

This depends on the scholarship rules, which you will need to check carefully. In cases where part-time scholarships are allowed, you may need to demonstrate exceptional circumstances which indicate why you cannot study full-time. This may include full-time caring commitments for children under school age, medical reasons or a disability.

Am I a rural or regional student?

Flinders University considers a student rural or regional by comparing your home address against the Australian Standard Geographical Classification (ASGC) of regional and remote locations. You can view the map via: doctorconnect.gov.au

Will my scholarship affect my Centrelink payments?

Merit-based and equity scholarships, including the awards listed in this guide, are exempt from Centrelink's income assessment up to \$8355 - (2021). Any amount from scholarship(s) payments over \$8355 pa is considered personal income and may affect your fortnightly Centrelink payment(s).

Make sure that you report any scholarship that you receive to Centrelink. For more details, visit: servicesaustralia.gov.au

Will I be eligible for a Start-up payment or Relocation Scholarship from Centrelink?

Students in receipt of Youth Allowance, Austudy or ABSTUDY are eligible for an income-based Start-up Loan to assist with the costs of study. Loan payments are made in semester instalments alongside Centrelink support, and are repayable in the same way as HECS-HELP.

Relocation scholarships are non-repayable grants made available for students who must live away from their family home to study and are in receipt of Centrelink payments. For more details, visit: studyassist.gov.au

Do I need to pay tax on my scholarship?

Scholarships for full-time undergraduate study are usually not taxable. If you are a part-time student or are receiving multiple scholarships, then you should check with the Australian Taxation Office (ATO). Phone 13 28 61 or visit: ato.gov.au



"The Wyndham Richardson Scholarship Fund has been invaluable to reduce the financial pressure during studies, especially now that I am in the later years of my degree. These extra funds have helped me to establish a more stable and healthy lifestyle and I am truly appreciative of this support."

Ryan Rowston

Bachelor of Computer Science
Wyndham Richardson Scholarship Fund



"I am very grateful to have received the Flinders University Student Access Scholarship which was a huge help in overcoming some of the upfront costs of university study. In particular, I found the scholarship very helpful in reducing some of the financial strain of travelling long distance to and from Flinders University that I have experienced as a rural student."

Jessica Penrose

Bachelor of Science (Honours)
(Enhanced Program for High Achievers),
Flinders University Student Access
Scholarship recipient

	SATAC CODE (^ AT FESTIVAL PLAZA)	2023 SELECTION RANK	2023 GUARANTEED SELECTION RANK	PATHWAY DEGREES	ADDITIONAL ENTRY REQUIREMENTS
Associate Degrees					
Disability and Community Practice	249011, 284021^	60	NA	Diploma of Disability and Community Practice (216051)	None
Health Sciences	249021, 284031^	60	NA	Diploma in Health Sciences (216081)	None
Medical Science (Laboratory Medicine)	249041	70	NA	Speak to us about your options	None
Diplomas					
Disability and Community Practice	216051, 284661^	50	60	Speak to us about your options	None
Health Sciences	216081	50	60	Speak to us about your options	None
Arts	216031	50	60	Speak to us about your options	None
Business	216041, 284641^	50	60	Speak to us about your options	None
DLanguage	216061	60	65	Diploma of Arts	None
Laws	216071, 284651^	80	85	Diploma of Arts	None
Undergraduate Certificate					
Acting	278071	60	NA	Diploma of Arts	None
Digital and Entertainment Design	278045	60	NA	Diploma of Arts	None
Public Health	278061	60	NA	Diploma in Health Sciences	None
Bachelor Degrees					
Accounting	244001, 284041^	65	75	Commerce (234201), Business (214761), Diploma in Business (216041)	None
Accounting (Online)	274105	65	75	Business (Online) (274015)	None
Accounting and Finance	244011, 284051^	65	75	Accounting (244001) Commerce (234201), Business (214761), Diploma in Business (216041)	None
Archaeology	214021	60	70	Arts and Science (234011), Arts (214031), Diploma in Arts (216031)	None
Arts	214031	60	70	Diploma in Arts (216031)	None
Arts (Health in Community Contexts)	244871	60	70	Diploma in Arts (216031)	None
Arts (Professional Futures)	244881	60	70	Diploma in Arts (216031)	None
Arts and Science	234011	70	75	Arts (214031), Diploma in Arts (216031)	None
Banking and Finance	244021, 284061^	70	75	Commerce (234201), Business (214761), Diploma in Business (216041)	None
Business	214761, 284071^	60	70	Diploma in Business (216041)	None
Business (Human Resource Management)	224401, 284081^	65	75	Business (214761), Diploma in Business (216041)	None
Business (International Business)	224411, 284091^	65	75	Business (214761), Diploma in Business (216041)	None
Business (International Business) (Online)	274045	65	75	Business (Online) (274015)	None
Business (Management)	224361, 284101^	65	75	Business (214761), Diploma in Business (216041)	None
Business (Management) (Online)	274025	65	75	Business (Online) (274015)	None
Business (Marketing)	224371, 284111^	65	75	Business (214761), Diploma in Business (216041)	None
Business (Marketing) (Online)	274035	65	75	Business (Online) (274015)	None
Business (Online)	274015	65	70	Speak to us about your options	None
Business (Sport Management)	244041, 284121^	65	75	Business (214761), Diploma in Business (216041)	None
Business Economics	244061, 284131^	65	75	Commerce (234201), Business (214761), Diploma in Business (216041)	None
Clinical Sciences/Doctor of Medicine	214941	NA	NA	Medical Science (214421), Paramedic Science (224321), Public Health (244341)	Applicants must complete the University Clinical Aptitude Test (UCAT).
Commerce	234201, 284141^	65	70	Business (214761), Diploma in Business (216041)	None
Computer Science (Artificial Intelligence) (Honours)	244231	80	85	Computer Science (Artificial Intelligence) (244221), Computer Science (214821), Information Technology (214201), Science (234511), Diploma in Arts (216031)	SACE stage two general mathematics or equivalent.
Computer Science (Artificial Intelligence)	244221	63	75	Computer Science (214821), Information Technology (214201), Science (234511), Diploma in Arts (216031)	SACE stage two general mathematics or equivalent.
Computer Science (Honours)/Master of Science (Mathematics)	244731	95	95	Computer Science (214821), Information Technology (214201), Science (234511)	SACE stage two specialist mathematics or mathematical methods or equivalent.
Computer Science (Honours)	224431	80	80	Computer Science (214821), Information Technology (214201), Science (234511), Diploma in Arts (216031)	SACE stage two general mathematics or equivalent.
Computer Science	214821, 284151^	63	70	Information Technology (214201), Science (234511), Diploma in Arts (216031)	SACE stage two general mathematics or equivalent.

	SATAC CODE (^ AT FESTIVAL PLAZA)	2023 SELECTION RANK	2023 GUARANTEED SELECTION RANK	PATHWAY DEGREES	ADDITIONAL ENTRY REQUIREMENTS
Bachelor Degrees					
Creative Arts (Costume Design) (VET Pathway)	234731	NA	NA	Speak to us about your options	Applicants must have completed either the Advanced Diploma of Applied Fashion Design and Technology (LMT60307), the Advanced Diploma of Fashion and Textiles Merchandising (LMT60507) or the Advanced Diploma of Applied Fashion Design and Merchandising (MST60116). Advanced Diploma qualification in a related area are also encouraged to apply for this pathway.
Creative Arts (Costume Design) in partnership with TAFE SA	234721	60	70	Arts (214031), Diploma in Arts (216031)	None
Creative Arts (Creative Writing)	214551, 284161^	60	NA	Creative Industries (Writing and Publishing) (244331), Arts (214031), Diploma in Arts (216031)	Minimum academic requirement plus submission of a portfolio, written statement, CV, audition and/or interview is required
Creative Arts (Dance) in partnership with TAFE SA	224691	60	NA	Arts (214031), Diploma in Arts (216031)	Minimum academic requirement plus submission of a portfolio, written statement, CV, audition and/or interview is required
Creative Arts (Drama)	214561	60	NA	Creative Industries (Theatre and Performance)(244321), Arts (214031), Diploma in Arts (216031)	Minimum academic requirement plus submission of a portfolio, written statement, CV, audition and/or interview is required
Creative Arts (Fashion) (VET pathway)	224951	TAFE/VET Advanced Diploma	NA	Speak to us about your options	Applicants must have completed either the Advanced Diploma of Applied Fashion Design and Technology (LMT60307), Advanced Diploma of Fashion and Textiles Merchandising (LMT60507), or Advanced Diploma of Applied Fashion Design and Merchandising (MST60116). Advanced Diploma qualification in a related area are also encouraged to apply for this pathway.
Creative Arts (Fashion) in partnership with TAFE SA	224901	60	70	Arts (214031), Diploma in Arts (216031)	None
Creative Arts (Game Production)	244601, 284171^	60	70	Creative Industries (Digital Media) (244291), Arts (214031), Diploma in Arts (216031)	Minimum academic requirement plus submission of a portfolio, written statement, CV, audition and/or interview is required
Creative Arts (Screen)	214571	60	NA	Creative Industries (Film and Television) (244301), Arts (214031), Diploma in Arts (216031)	Minimum academic requirement plus submission of a portfolio, written statement, CV, audition and/or interview is required
Creative Arts (Visual Arts) in partnership with TAFE SA	224911	60	70	Arts (214031), Diploma in Arts (216031)	None
Creative Arts (Visual Effects and Entertainment Design) (VET Pathway)	224161	TAFE/VET Advanced Diploma	NA	Speak to us about your options	Applicants must have completed either the Advanced Diploma of Screen and Media (Specialising in Game Art) (CUA60615); Advanced Diploma of Screen and Media (Specialising in CGI and Visual Effects) (CUA60615) or Advanced Diploma of Screen and Media (CUA60615). Advanced Diploma qualification in a related area are also encouraged to apply for this pathway.
Creative Arts (Visual Effects and Entertainment Design)	224131, 284181^	60	NA	Creative Industries (Digital Media) (244291), Arts (214031), Diploma in Arts (216031)	Minimum academic requirement plus submission of a portfolio, written statement, CV, audition and/or interview is required
Creative Industries (Digital Media)	244291, 284191^	60	70	Arts (214031), Diploma in Arts (216031)	None
Creative Industries (Festivals and Arts Production)	244461, 284201^	60	70	Arts (214031), Diploma in Arts (216031)	None
Creative Industries (Film and Television)	244301, 284211^	60	70	Arts (214031), Diploma in Arts (216031)	None
Creative Industries (Interactive Design)	244311, 284221^	60	70	Arts (214031), Diploma in Arts (216031)	None
Creative Industries (Music)	244611	60	70	Arts (214031), Diploma in Arts (216031)	None
Creative Industries (Theatre and Performance)	244321, 284211^	60	70	Arts (214031), Diploma in Arts (216031)	None
Creative Industries (Writing and Publishing)	244331, 284231^	60	70	Arts (214031), Diploma in Arts (216031)	None
Criminology	234661, 284241^	65	75	Arts (214031), Diploma in Arts (216031)	None
Criminology (Cybersecurity)	244901	65	75	Criminology (234661), Arts (214031), Diploma in Arts (216031)	None
Criminology (Honours)	234941, 284251^	90	95	Criminology (234661), Diploma in Arts (216031), Arts (214031)	None
Criminology (Innovation)	244911	65	75	Criminology (234661), Arts (214031), Diploma in Arts (216031)	None
Criminology (Honours)/International Relations and Political Science combined degrees	284671^	NA	NA	Speak to us about your options	NA
Design and Technology	244591	70	75	Science (234511)	None
Disability and Community Inclusion	244471, 284261^	60	70	Diploma in Disability and Community Practice (216051), Associate Degree in Disability and Community Practice (249011)	None
Disability and Developmental Education	224531, 284271^	60	70	Diploma in Disability and Community Practice (216051), Associate Degree in Disability and Community Practice (249011)	None
Bachelor of Disability and Developmental Education (Online)	224535	60	70	Diploma in Disability and Community Practice (216051)	None

	SATAC CODE (^ AT FESTIVAL PLAZA)	2023 SELECTION RANK	2023 GUARANTEED SELECTION RANK	PATHWAY DEGREES	ADDITIONAL ENTRY REQUIREMENTS
Bachelor Degrees					
Early Childhood Education (Birth - 8)	244491	70	80	Diploma in Arts (216031), Arts (214031)	Successful review of Teaching Capabilities Statement
Education (Primary)	244501	70	80	Diploma in Arts (216031), Arts (214031)	Successful review of Teaching Capabilities Statement
Education (Secondary Health and Physical Education)	244521	70	80	Sport, Health and Physical Activity (224741), Diploma in Arts (216031), Arts (214031)	Successful review of Teaching Capabilities Statement
Education (Secondary)	244511	70	80	Diploma in Arts (216031), Arts (214031)	Successful review of Teaching Capabilities Statement
Engineering (Biomedical) (Honours)/Master of Engineering (Biomedical)	224861	95	95	Engineering (Biomedical) (Honours) (224781), Engineering (Honours) - Flexible Entry (234931), Engineering (General Entry) (244441), Engineering Science (214811), Science (234511), Diploma in Arts (216031), Associate Degree in Biomedical Engineering/Bachelor of Engineering (Biomedical) (Honours)	Prerequisites: SACE stage two specialist mathematics or mathematical methods or equivalent. Knowledge of SACE stage two physics or equivalent is assumed.
Engineering (Biomedical) (Honours)	224781	75	80	Engineering (Honours) - Flexible Entry (234931), Engineering (General Entry) (244441), Engineering Science (214811), Science (234511), Diploma in Arts (216031), Associate Degree in Biomedical Engineering/Bachelor of Engineering (Biomedical) (Honours)	Prerequisites: SACE stage two specialist mathematics or mathematical methods or equivalent. Knowledge of SACE stage two physics or equivalent is assumed.
Engineering (Civil) (Honours)/Master of Engineering Management	244741	90	95	Engineering (Civil) (Honours) (224791), Engineering (Honours) - Flexible Entry (234931), Engineering (General Entry) (244441), Engineering Science (214811), Associate Degree in Civil and Structural Engineering /Bachelor of Engineering (Civil) (Honours)	Prerequisites: SACE stage two specialist mathematics or mathematical methods or equivalent. Knowledge of SACE stage two physics or equivalent is assumed.
Engineering (Civil) (Honours)	224791, 284281^	75	80	Engineering (Honours) - Flexible Entry (234931), Engineering (General Entry) (244441), Engineering Science (214811), Science (234511), Diploma in Arts (216031), Associate Degree in Civil and Structural Engineering /Bachelor of Engineering (Civil) (Honours)	Prerequisites: SACE stage two specialist mathematics or mathematical methods or equivalent. Knowledge of SACE stage two physics or equivalent is assumed.
Engineering (Electrical and Electronic) (Honours)/Master of Engineering (Mechanical)	244571	95	95	Engineering (Electrical and Electronic) (Honours) (244431), Engineering (Honours) - Flexible Entry (234931), Engineering (General Entry) (244441), Engineering Science (214811), Diploma in Arts (216031), Associate Degree in Electronic Engineering/Bachelor of Engineering (Robotics) (Honours)	Prerequisites: SACE stage two specialist mathematics or mathematical methods or equivalent. Knowledge of SACE stage two physics or equivalent is assumed.
Engineering (Electrical and Electronic) (Honours)/Master of Engineering Management	244751	90	95	Bachelor of Engineering (Electrical and Electronic) (Honours) (244431), Engineering (Honours) - Flexible Entry (234931), Engineering (General Entry) (244441), Engineering Science (214811), Associate Degree in Electronic Engineering/Bachelor of Engineering (Robotics) (Honours)	Prerequisites: SACE stage two specialist mathematics or mathematical methods or equivalent, and stage two physics or equivalent
Engineering (Electrical and Electronic) (Honours)	244431, 284291^	75	80	Engineering (Honours) - Flexible Entry (234931), Engineering (General Entry) (244441), Engineering Science (214811), Science (234511), Diploma in Arts (216031), Associate Degree in Electronic Engineering/Bachelor of Engineering (Robotics) (Honours)	Prerequisites: SACE stage two specialist mathematics or mathematical methods or equivalent. Knowledge of SACE stage two physics or equivalent is assumed.
Engineering (Environmental) (Honours)/Master of Engineering (Civil)	244561	95	95	Engineering (Environmental) (Honours) (244401), Engineering (Honours) - Flexible Entry (234931), Engineering (General Entry) (244441), Engineering Science (214811), Diploma in Arts (216031)	Prerequisites: SACE stage two specialist mathematics or mathematical methods or equivalent. Knowledge of SACE stage two physics or equivalent is assumed.
Engineering (Environmental) (Honours)	244401	75	80	Engineering (Honours) - Flexible Entry (234931), Engineering (General Entry) (244441), Engineering Science (214811), Science (234511), Diploma in Arts (216031)	Prerequisites: SACE stage two specialist mathematics or mathematical methods or equivalent. Knowledge of SACE stage two physics or equivalent is assumed.
Engineering (Honours) - Flexible Entry	234931, 284301^	70	80	Engineering (General Entry) (244441), Engineering Science (214811), Diploma in Arts (216031)	Prerequisites: SACE stage two specialist mathematics or mathematical methods or equivalent. Knowledge of SACE stage two physics or equivalent is assumed.
Engineering (Honours) - General Entry	244441, 284311^	70	80	Engineering Science (214811), Science (234511), Diploma in Arts (216031)	Prerequisites: SACE stage two general mathematics or SACE stage one mathematics
Engineering (Maritime) (Honours)	234591	75	80	Engineering (Honours) - Flexible Entry (234931), Engineering (General Entry) (244441), Engineering Science (214811), Science (234511), Diploma in Arts (216031)	Prerequisites: SACE stage two specialist mathematics or mathematical methods or equivalent. Knowledge of SACE stage two physics or equivalent is assumed.
Engineering (Mechanical) (Honours)/Master of Engineering (Biomedical)	224871	95	95	Engineering (Mechanical) (Honours) (224831), Engineering (Honours) - Flexible Entry (234931), Engineering Science (214811), Science (234511), Diploma in Arts (216031)	Prerequisites: SACE stage two specialist mathematics or mathematical methods or equivalent. Knowledge of SACE stage two physics or equivalent is assumed.
Engineering (Mechanical) (Honours)/Master of Engineering Management	244761	90	95	Bachelor of Engineering (Mechanical) (Honours) (224831), Engineering (Honours) - Flexible Entry (234931), Engineering (General Entry) (244441), Engineering Science (214811)	Prerequisites: SACE stage two specialist mathematics or mathematical methods or equivalent. Knowledge of SACE stage two physics or equivalent is assumed.
Engineering (Mechanical) (Honours)	224831, 284321^	75	80	Engineering (Honours) - Flexible Entry (234931), Engineering (General Entry) (244441), Engineering Science (214811), Science (234511) Diploma in Arts (216031)	Prerequisites: SACE stage two specialist mathematics or mathematical methods or equivalent. Knowledge of SACE stage two physics or equivalent is assumed.
Engineering (Robotics) (Honours)/Master of Engineering (Electrical and Electronic)	244451	95	95	Engineering (Robotics) (Honours) (224841), Engineering (Honours) - Flexible Entry (234931), Engineering (General Entry) (244441), Engineering Science (214811), Diploma in Arts (216031)	Prerequisites: SACE stage two specialist mathematics or mathematical methods or equivalent. Knowledge of SACE stage two physics or equivalent is assumed.
Engineering (Robotics) (Honours)	224841	75	80	Engineering (Honours) - Flexible Entry (234931), Engineering (General Entry) (244441), Engineering Science (214811), Diploma in Arts (216031), Science (234511)	Prerequisites: SACE stage two specialist mathematics or mathematical methods or equivalent. Knowledge of SACE stage two physics or equivalent is assumed.

	SATAC CODE (^ AT FESTIVAL PLAZA)	2023 SELECTION RANK	2023 GUARANTEED SELECTION RANK	PATHWAY DEGREES	ADDITIONAL ENTRY REQUIREMENTS
Bachelor Degrees					
Engineering (Software) (Honours)	224851, 284331^	75	80	Engineering (Honours) - Flexible Entry (234931), Engineering (General Entry) (244441), Engineering Science (214811), Diploma in Arts (216031), Science (234511)	Prerequisites: SACE stage two specialist mathematics or mathematical methods or equivalent. Knowledge of SACE stage two physics or equivalent is assumed.
Engineering Science	214811, 284341^	60	70	Science (234511), Diploma in Arts (216031)	None
Engineering Technology (Advanced Manufacturing and Digital Design)	244621	70	75	Engineering Science (214811), Science (234511)	Knowledge of SACE stage two physics and mathematics or equivalent is assumed.
Engineering Technology (Systems and Security)	244701	70	75	Engineering Science (214811), Science (234511)	Prerequisite: SACE Stage one mathematics or stage two general mathematics. Knowledge of SACE stage two physics or equivalent is assumed.
Engineering Technology (Systems and Security)/ Science (Physics)	244711	70	75	Engineering Science (214811), Science (234511)	Prerequisite: SACE Stage one mathematics or stage two general mathematics. Knowledge of SACE stage two physics and specialist mathematics or mathematical methods is assumed.
Exercise Science	234551	75	90	Health Sciences (244351), Sport, Health & Physical Activity (224741), Diploma in Health Sciences (216081)	Knowledge of SACE stage two biology or equivalent is assumed.
Exercise Science/Master of Clinical Exercise Physiology	234571	90	95	Exercise Science (234551), Health Sciences (244351), Sport, Health & Physical Activity (224741), Diploma in Health Sciences (216081)	Knowledge of SACE stage two biology or equivalent is assumed.
Finance	244091, 284351^	65	75	Commerce (234201), Business (214761), Diploma in Business (216041)	None
Finance and Business Economics	244101, 284361^	65	75	Finance (244091), Commerce (234201), Business (214761), Diploma in Business (216041)	None
Geospatial Information Systems	244721	70	70	Science (234511)	None
Health Science (Vision Science)/Master of Optometry	244631	95	NA	Bachelor of Medical Science (214421), Science (234511), Health Sciences (244351), Diploma in Health Sciences (216081)	Knowledge of SACE stage two chemistry, mathematics and physics or equivalent is assumed.
Health Sciences (Digital Health)	244361, 284381^	70	70	Science (234511), Diploma in Health Sciences (216081)	None
Health Sciences (Health Management and Ageing streams)	284371^	NA	NA	Speak to us about your options	NA
Health Sciences (Physiology and Neuroscience)	244371	70	70	Health Sciences (244351), Science (234511), Diploma in Health Sciences (216081)	None
Health Sciences (Psychology)	244381, 284391^	70	70	Health Sciences (244351), Science (234511), Diploma in Health Sciences (216081)	None
Health Sciences (Therapy Studies)	244391, 284401^	70	70	Health Sciences (244351), Science (234511), Diploma in Health Sciences (216081)	None
Health Sciences [streams: Health Sciences, Ageing, Health Management, Health Promotion, Innovation]	244351	65	70	Science (234511), Diploma in Health Sciences (216081)	None
Health Sciences/Master of Occupational Therapy	224071	82.75	95	Health Sciences (Therapy Studies) (244391), Science (234511), Diploma in Health Sciences (216081)	Knowledge of SACE stage two biology or equivalent is assumed.
Health Sciences/Master of Physiotherapy	224081	93	NA	Health Sciences (Therapy Studies) (244391), Science (234511), Diploma in Health Sciences (216081)	Knowledge of SACE stage two biology and physics or equivalent is assumed.
Human Nutrition	234841	65	NA	Health Sciences (244351), Science (234511), Diploma in Health Sciences (216081)	Knowledge of SACE stage two biology or equivalent is assumed.
Inclusive and Specialised Education (Early Childhood)	244531	70	80	Diploma in Disability and Community Practice (216051)	Successful review of Teaching Capabilities Statement
Inclusive and Specialised Education (Primary)	244541	70	80	Diploma in Disability and Community Practice (216051)	Successful review of Teaching Capabilities Statement
Inclusive and Specialised Education (Secondary)	244551	70	80	Diploma in Disability and Community Practice (216051)	Successful review of Teaching Capabilities Statement
Information Technology	214201, 284431^	60	70	Science (234511), Diploma in Arts (216031)	None
Information Technology (Business and Information Systems)	244811, 284441^	65	70	Information Technology (214201), Science (234511)	None
Information Technology (Business and Information Systems) (Honours)	244821	70	80	Information Technology (Business and Information Systems) (244811)	None
Information Technology (Data Analytics)	244831, 284451^	65	70	Information Technology (214201), Science (234511)	None
Information Technology (Data Analytics) (Honours)	244841	70	80	Information Technology (Data Analytics) (244821), Information Technology (214201), Science (234511)	None
Information Technology (Digital Forensics)	244641	65	70	Information Technology (214201), Science (234511)	None
Information Technology (Digital Forensics) (Honours)	244771	70	80	Information Technology (Digital Forensics) (244641), Information Technology (214201), Science (234511)	None
Information Technology (Game Development)	224101, 284461^	65	70	Information Technology (214201), Science (234511), Diploma in Arts (216031)	None
Information Technology (Game Development) (Honours)	224041	70	80	Information Technology (Game Development) (224101), Information Technology (214201), Science (234511), Diploma in Arts (216031)	None
Information Technology (Honours)	224441	70	80	Information Technology (214201), Science (234511), Diploma in Arts (216031)	None
Information Technology (Machine Learning)	244851, 284471^	65	70	Information Technology (214201), Science (234511)	None
Information Technology (Machine Learning) (Honours)	244861	70	80	Information Technology (Machine Learning) (244851), Information Technology (214201), Science (234511)	None

	SATAC CODE (^ AT FESTIVAL PLAZA)	2023 SELECTION RANK	2023 GUARANTEED SELECTION RANK	PATHWAY DEGREES	ADDITIONAL ENTRY REQUIREMENTS
Bachelor Degrees					
Information Technology (Network and Cybersecurity Systems)	224701, 284481^	65	70	Information Technology (214201), Science (234511), Diploma in Arts (216031)	Knowledge of SACE stage two specialist mathematics, mathematical methods or equivalent is assumed
Information Technology (Network and Cybersecurity Systems) (Honours)	224711	70	80	Information Technology (Network and Cybersecurity Systems) (224701), Information Technology (214201), Science (234511), Diploma in Arts (216031)	Knowledge of SACE stage two specialist mathematics, mathematical methods or equivalent is assumed
International Relations and Political Science	244191, 284491^	60	70	Arts (214031), Diploma in Arts (216031)	None
International Relations and Political Science (Honours)	244271, 284501^	70	80	International Relations (244191), Arts (214031), Diploma in Arts (216031)	None
Languages	214921	70	80	Arts (214031), Diploma in Language (216061)	None
Laws	244241, 284511^	90	95	Diploma in Laws (216071), Arts (214031), Diploma in Arts (216031)	None
Laws (Honours)	244251, 284521^	95	95	Laws (244241), Diploma in Laws (216071), Arts (214031), Diploma in Arts (216031)	None
Laws (Honours)/ Accounting combined degrees	244931, 284531^	NA	NA	Speak to us about your options	NA
Laws/ Business combined degrees	244941, 284541^	NA	NA	Speak to us about your options	NA
Laws/ Criminology combined degrees	244951, 284571^	NA	NA	Speak to us about your options	NA
Laws/ International Relations and Political Science combined degrees	244961, 284581^	NA	NA	Speak to us about your options	NA
Laws and Legal Practice	244111, 284551^	90	95	Laws (244241), Diploma in Laws (216071), Arts (214031), Diploma in Arts (216031)	None
Laws and Legal Practice (Honours)	244121, 284561^	95	95	Laws & Legal Practice (244111), Diploma in Laws (216071), Arts (214031), Diploma in Arts (216031)	None
Mathematical Sciences (Honours)	224641	80	80	Mathematical Sciences (224631), Science (234511), Arts and Science (234011), Diploma in Arts (216031)	Prerequisites: SACE stage two specialist mathematics or mathematical methods or equivalent
Mathematical Sciences	224631	70	70	Science (234511), Arts and Science (234011), Diploma in Arts (216031)	Prerequisites: SACE stage two specialist mathematics or mathematical methods or equivalent
Media and Communication	224151, 284591^	70	75	Arts (214031), Diploma in Arts (216031)	None
Medical Science	214421	70	80	Health Sciences (244351), Science (234511), Diploma in Health Sciences (216081)	None; combined degree must meet Biomedical Engineering prerequisites
Medical Science (Accelerated)	244651	90	NA	Health Sciences (244351), Science (234511), Diploma in Health Sciences (216081)	Prerequisites: SACE stage two chemistry or equivalent.
Medical Science (Honours)	244891	85	95	Bachelor of Medical Science (214421)	None
Medical Science (Laboratory Medicine)	244581	85	NA	Bachelor of Medical Science (214421), Science (234511), Diploma in Health Sciences (216081)	None
Medical Science (Laboratory Medicine) (Regional Placement)	244583	85	NA	Bachelor of Medical Science (214421)	None
Midwifery (Pre-registration)	214431	90	NA	Nursing (214311), Science (234511), Diploma in Health Sciences (216081)	None
Nursing (Pre-registration) (Riverland)	214312	60	70	Speak to us about your options	None
Nursing (Pre-registration)	214311	72	75	Science (234511), Diploma in Health Sciences (216081)	None
Nutrition and Dietetics	214381	92	NA	Human Nutrition (234841), Health Sciences (244351), Diploma in Health Sciences (216081)	None
Paramedic Science	224321	96	NA	Health Sciences (244351), Science (234511), Diploma in Health Sciences (216081)	None
Paramedic Science (Northern Territory)	224325	92.75	NA	Speak to us about your options	None
Paramedic Science (Regional External Program)	224327	Required to be a rural resident	NA	Speak to us about your options	None
Psychological Science	224651, 284601^	60	80	Arts (214031), Diploma in Arts (216031)	None
Psychology (Honours)	214321	90	NA	Psychological Science (224651), Arts (214031), Diploma in Arts (216031)	None
Public Health	244341	70	80	Undergraduate Certificate in Public Health Health Sciences (244351), Diploma in Health Sciences (216081)	None
Science	234511	60	70	Arts and Science (234011), Arts (214031), Diploma in Arts (216031)	None
Science (Animal Behaviour)	234211	70	70	Science (234511), Diploma in Arts (216031)	None
Science (Biodiversity and Conservation)	234221	70	70	Science (234511), Diploma in Arts (216031)	None
Science (Biotechnology)	234521	70	70	Science (234511), Diploma in Arts (216031)	None
Science (Chemical Sciences)	234231	70	70	Science (234511), Diploma in Arts (216031)	None
Science (Environmental Science)	234271	70	70	Science (234511), Diploma in Arts (216031)	None
Science (Forensic and Analytical Science Pathway)	234171	60	70	Science (234511), Diploma in Arts (216031)	None
Science (Forensic and Analytical Science)	234281	70	70	Science (Forensic and Analytical Science Pathway) (234171), Science (234511), Diploma in Arts (216031)	Prerequisites: SACE stage two chemistry or equivalent.

	SATAC CODE (^ AT FESTIVAL PLAZA)	2023 SELECTION RANK	2023 GUARANTEED SELECTION RANK	PATHWAY DEGREES	ADDITIONAL ENTRY REQUIREMENTS
Bachelor Degrees					
Science (Honours) (Animal Behaviour)	234361	80	80	Science (Animal Behaviour) (234211), Science (234511), Diploma in Arts (216031)	None
Science (Honours) (Biodiversity and Conservation)	234371	80	80	Science (Biodiversity & Conservation) (234221), Science (234511), Diploma in Arts (216031)	None
Science (Honours) (Biotechnology)	234541	80	80	Science (Biotechnology) (234521), Science (234511), Diploma in Arts (216031)	None
Science (Honours) (Chemical Sciences)	234381	80	80	Science (Chemical Sciences) (234231), Science (234511), Diploma in Arts (216031)	None
Science (Honours) (Environmental Science)	234421	80	80	Science (Environmental Science) (234271), Science (234511), Diploma in Arts (216031)	None
Science (Honours) (Forensic and Analytical Science)	234431	80	80	Science (Forensic & Analytical Science) (234281), Science (Forensic and Analytical Science Pathway) (234171), Diploma in Arts (216031)	Prerequisites: SACE stage two chemistry or equivalent.
Science (Honours) (Life Sciences)	244791	80	80	Science (Life Sciences) (244661), Science (234511)	None
Science (Honours) (Marine Biology)	234451	80	80	Science (Marine Biology) (234301), Science (234511), Diploma in Arts (216031)	None
Science (Honours) (Palaeontology)	224051	80	80	Science (Palaeontology) (224061), Science (234511), Diploma in Arts (216031)	None
Science (Honours) (Physics)	234491	80	80	Science (Physics) (234341), Science (234511), Diploma in Arts (216031)	Assumed knowledge: SACE stage two physics and mathematical methods or equivalent.
Science (Honours) (Plant Science)	244801	80	80	Science (Plant Science) (244681), Science (234511)	None
Science (Honours) Enhanced Program for High Achievers	214721	95	95	Any Science Honours Specialisation, Science (234511), Diploma in Arts (216031)	Prerequisites: At least three of the following SACE stage two subjects or equivalent: biology, mathematical methods, specialist mathematics, chemistry, physics, geology.
Science (Life Sciences)	244661	70	70	Science (234511)	None
Science (Marine Biology)	234301	70	70	Science (234511), Diploma in Arts (216031)	None
Science (Palaeontology)	224061	70	70	Science (234511), Diploma in Arts (216031)	None
Science (Physics)	234341	70	70	Science (234511), Diploma in Arts (216031)	Assumed knowledge: SACE stage two physics and mathematical methods or equivalent.
Science (Plant Science)	244681	70	70	Science (234511)	None
Social Work	224761, 284611^	70	80	Arts (214031), Diploma in Arts (216031)	None
Social Work (External)	244285	70	80	Arts (214031), Diploma in Arts (216031)	None
Speech Pathology	214352	80	95	Health Sciences (244351), Arts (224031), Diploma in Health Sciences (216081), Diploma in Arts (216031)	None
Sport, Health and Physical Activity	224741, 284621^	65	80	Business (214761), Diploma in Business (216041)	None
Sport, Health and Physical Activity (Outdoor Education)	224111	65	80	Sport, Health and Physical Activity (224741), Business (214761), Diploma in Business (216041)	None
Tourism and Events	224001, 284631^	70	80	Arts (214031), Diploma in Arts (216031)	None

Key

* Clinical Science/ Doctor of Medicine does not offer a tertiary transfer pathway. However, Flinders reserves up to 75% of places in the Doctor of Medicine for graduates of a Flinders degree. For further details go to flinders.edu.au/medicine

NA = Guaranteed entry is not available.

Applying for University

How do I qualify for university?

- Complete Year 12: South Australian Certificate of Education (SACE), International Baccalaureate (IB), or interstate/overseas equivalent.
- Have the appropriate combination of Tertiary Admissions Subjects (TAS)

To make sure you are completing the correct combination of subjects, please check the SATAC publication 'Tertiary Entrance 2023, 2024, 2025.' This can be downloaded from [satac.edu.au](https://www.satac.edu.au)

Some of the courses you are interested in may have prerequisite subjects – a subject which you are required to successfully complete in order to be eligible for entry.

Some courses also have assumed knowledge – a subject area in which your lecturer will assume you have studied previously.

Finally, some will have additional entry requirements such as tests and auditions, or they may require a portfolio of work. Details about what is needed and when these requirements have to be satisfied are listed in university publications and the SATAC University Guide.

How do I apply for university?

All students – both Australian and International – studying Year 12 in Australia must apply online through SATAC at [satac.edu.au](https://www.satac.edu.au)

SATAC applications open in early August. You can choose six preferences in the SATAC Uni system. Ensure you submit your application by the late September deadline.

If you lodge an application after this date, but by the December deadline, you will be given equal consideration provided you pay a late fee. You can amend your application as many times as you like, up until early January.

For more details on application dates, please refer to the SATAC Guide or website.

How should I order my preferences?

Check you are eligible for the courses you list:

- Do you have the prerequisite subjects or assumed knowledge if required?
- Will you meet any other selection requirements?

You may enter up to six course preferences that you would like to study. You should list these in the order in which you would like to study them, with the one you would like most listed first.

If you cannot be offered a place in your first preference, you will then be considered for your second preference and so on.

It is also important to consider a backup plan. Ensure you include our recommended pathway courses in your preferences.

The recommended pathways for each degree are listed in this guide and are also available at [flinders.edu.au/pathways](https://www.flinders.edu.au/pathways)

Call us when you receive your results and the friendly staff at Flinders will offer you personalised advice to maximise your chances of receiving an offer to your first preference.

How will I be selected?

In most instances, the number of eligible applicants exceeds the number of places available. Eligible applicants must therefore be ranked in order of merit. The university will fill the places with the highest qualified applicants.

Your chances of being selected into a university degree may depend upon these factors:

- The number of places available.
- How many other eligible applicants there are.
- How competitive your Selection Rank (or other method of entry) and other criteria (if relevant) are in relation to the other eligible applicants.
- Your eligibility for guaranteed entry.
- Your performance in Flinders uniTEST.

What is a guaranteed entry selection rank?

Students who achieve a Selection Rank equal to or above the published Guaranteed Entry Selection Rank and meet any course pre-requisites, will be guaranteed a place at Flinders. All you need to do is ensure you have listed Flinders courses first in your preferences and you will be offered a place in the highest Flinders course preference for which you are eligible. A list of course Guaranteed Entry Selection Ranks can be found at:

[flinders.edu.au/selectionranks](https://www.flinders.edu.au/selectionranks)

How do I calculate my adjusted selection rank?

Adjustment factor points are added to your university aggregate, not your ATAR. Once you have received your results, contact Flinders for your adjusted Selection Rank.

How will I find out if I am offered a place at university?

The first offer main offer round is in mid-January. You can check your offer online on the SATAC website. Offers are also emailed via SATAC and printed in The Advertiser. You must respond to your offer and follow any instructions detailed in your offer email. Remember, there are numerous offer rounds so if you don't receive your first preference, speak to us about your options.

How can I defer my place at university?

It is possible to defer your place in most Flinders courses. This means your place will be kept for you to begin studying the following year. Simply activate your Flinders account by following the link on your offer letter, accept your offer and if no enrolment is recorded we will automatically defer your place. Check to see if your preferred course is deferrable, and see further instructions at [flinders.edu.au/defer](https://www.flinders.edu.au/defer)

What does it cost to study at university?

Students who are Australian Citizens, or New Zealand Special Category Visa (SVC) holders who meet long-term residency requirements, or holders of Permanent Humanitarian Visas, are eligible for a Higher Education Contribution Scheme (HECS-HELP) loan, and do not have to pay their student contribution amount upfront. This means you pay nothing towards your course fees while you study, and then pay back your student contribution amount in small instalments when you are working.

However some students choose to pay their student contribution amount upfront. Permanent Residents and non SVC New Zealand citizens must pay their student contribution amount upfront.

International students pay the full cost of their tuition, and they are not able to defer this payment.

Full details of the HECS-HELP scheme, your eligibility and repayment options are available at the Study Assist website: [studyassist.gov.au](https://www.studyassist.gov.au).

Other costs that all students need to plan for include books, equipment, possibly field trips, and the cost of accommodation, transport and general living expenses.

How can I find out more information?

[flinders.edu.au/study](https://www.flinders.edu.au/study)

[satac.edu.au](https://www.satac.edu.au)

[studyassist.gov.au](https://www.studyassist.gov.au)

[studyadelaide.com](https://www.studyadelaide.com) (international students)

To confirm specific dates or for help with your SATAC application, please contact us:

1300 354 633

askflinders@flinders.edu.au

[flinders.edu.au](https://www.flinders.edu.au)

Personalise your degree

The Bachelor of Letters is designed to provide you with an avenue to pursue your passions and gain skills that will make you more employable by undertaking a second study area in addition to your primary Flinders degree. Apply directly to Flinders once receiving your primary course offer.

Available specialisations are:

- Creative Writing
- History
- Mathematics
- TESOL

Find out more at [flinders.edu.au/letters](https://www.flinders.edu.au/letters)

The Diploma of Language can be studied along most other degrees at Flinders, allowing you to learn a new language, or extend your previous studies in:

- French
- Indonesian
- Italian
- Modern Greek
- Spanish

[flinders.edu.au/diplomas](https://www.flinders.edu.au/diplomas)

Flexible study options

Many Flinders courses offer you flexible study options, including part-time and online options. Flinders online courses provide a convenient and flexible way to achieve your study and career ambitions. You'll receive the same quality education and qualifications as on-campus students with dedicated support available throughout your entire degree. Students on-campus also have flexibility with online lectures, choosing your own timetable and face-to-face as well as online support services available.

[flinders.edu.au/online](https://www.flinders.edu.au/online)

Study abroad

make the most of your time at uni and check out the amazing range of exchange opportunities available. With over 80 world class partner institutions to choose from around the world, studying abroad is a great way to expand your horizons with us.

[flinders.edu.au/studyabroad](https://www.flinders.edu.au/studyabroad)

Getting to Flinders

Transport options

The Flinders Railway Line gets you from the CBD to Tonsley in a super-fast 20 minutes, or to Bedford Park in just 22 minutes. And with free Campus Connector and Tonsley Link bus services running 7am – 6pm Monday to Friday, getting to and from your studies is simple. You'll be able to schedule your day without worrying about missing a single lecture!

flinders.edu.au/loop-bus

Plan your trip to Flinders:

adelaidemetro.com.au/routes/flndrs

The Flinders railway line is now open

The new Flinders train line has made travel easier and more convenient than ever, linking Bedford Park to our Tonsley campus and the Adelaide city centre, now just 22 minutes away.

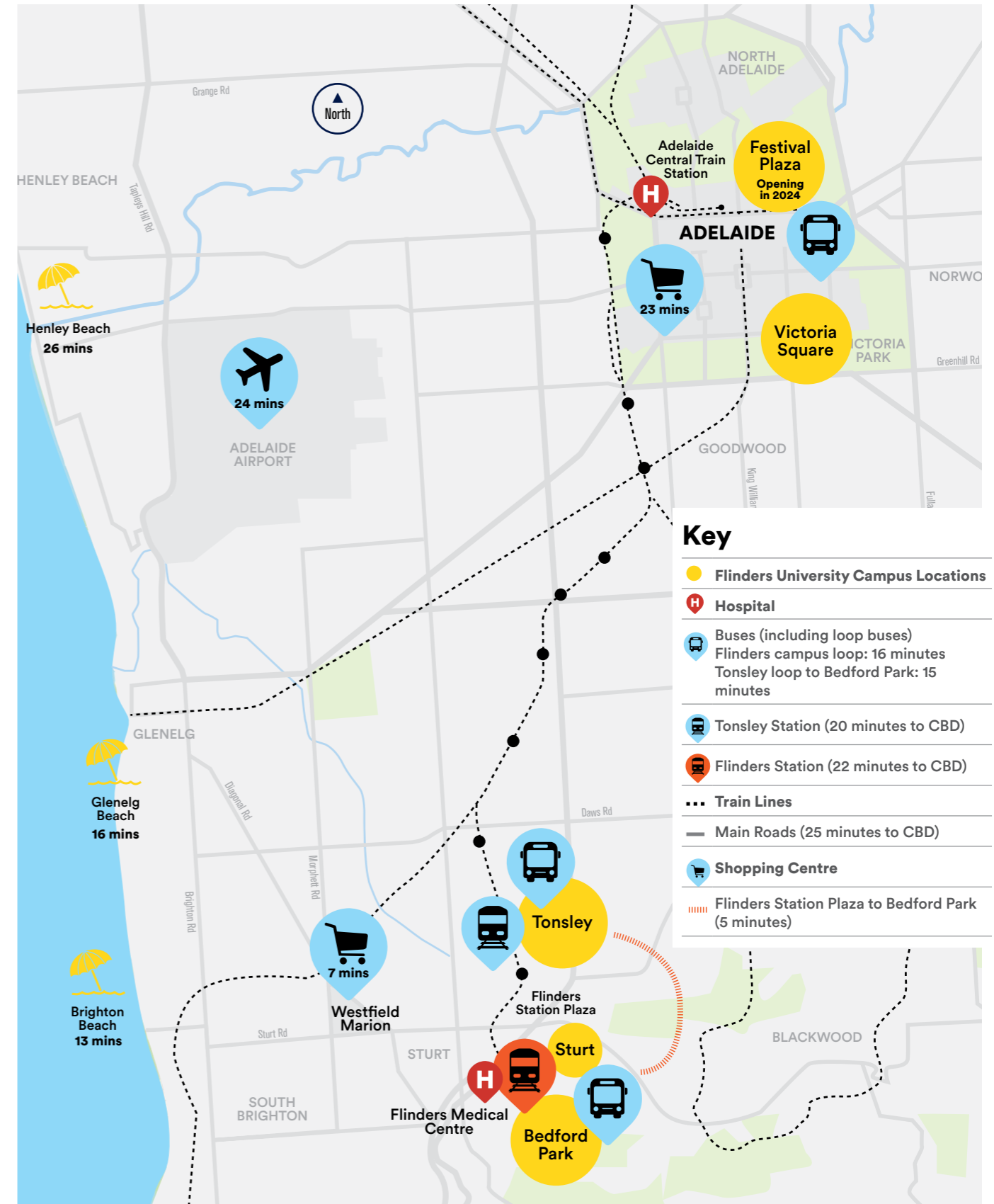
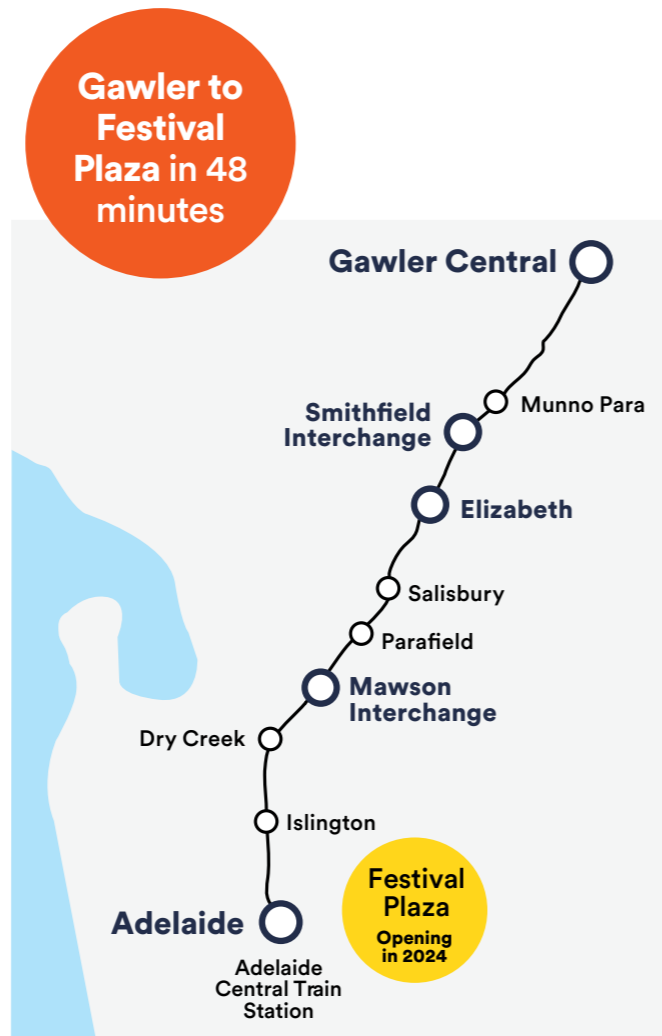


A new link from the north

Opened in June 2022, the electrified Gawler Rail Line provides services from the northern suburbs to the CBD, with express services expected to take around 48 minutes from Gawler to the CBD.

Plan your trip to Flinders CBD:

adelaidemetro.com.au/routes/gawc



Contact us

Our friendly staff are available to answer your questions:

1300 354 633 (local call cost) | askfinders@flinders.edu.au | flinders.edu.au/ask

International students should contact:

+61 8 8201 2727 | flinders.edu.au/international | INTLAdmissions@flinders.edu.au

Every effort has been made to ensure the information in this brochure is accurate at the time of publication: April 2023. Flinders University reserves the right to alter any course or topic contained herein without prior notice. Alterations are reflected in the course information available on the University's website. CRICOS No. 00114A