

Early Childhood | Primary | Secondary
Secondary Health & Physical Education
Inclusive & Specialised Education
Sport, Health & Physical Activity

2024



Teaching

Teaching

Early Childhood	6
Primary	6
Secondary	7
Secondary Health & Physical Education	7
Inclusive & Specialised Education	10
Requirements	10
Sport, Health & Physical Activity	11

Starting at Flinders

Location & map	14
Combined degrees	16
Flinders diplomas	16
Pathways to study	17
Student support	19
Indigenous Admissions Scheme	20
Overseas studies & scholarships	21
How to apply	22
Key dates	22
Fees & charges	22
Glossary	23

The following pages feature undergraduate degree programs and information for domestic students, including SATAC codes, selection ranks and more. For international CRICOS codes, visit flinders.edu.au/international



Acknowledgement of Country

Flinders University acknowledges the Traditional Owners and Custodians of the lands and waters on which its campuses are located. These are the Traditional Lands of the Arrernte, Dagoman, First Nations of the South East, First Peoples of the River Murray & Mallee region, Jawoyn, Kurna, Larrakia, Ngadjuri, Ngarrindjeri, Ramindjeri, Warumungu, Wardaman and Yolngu people. We honour their Elders past, present and emerging.



At Flinders, it's all about your education career

Follow your interests

Flinders University offers a range of education degrees that will allow you to follow your interests across areas such as early childhood, primary, secondary or inclusive and specialised education.

Choose your degree

Flinders' new suite of education degrees focuses on producing graduates with the highest levels of innovative thinking, research-informed practices and holistic understanding demanded by today's employers. Choose a degree that reflects your passions and graduate with the skills and knowledge to take your place in an ever-changing world.

Gain real-world experience

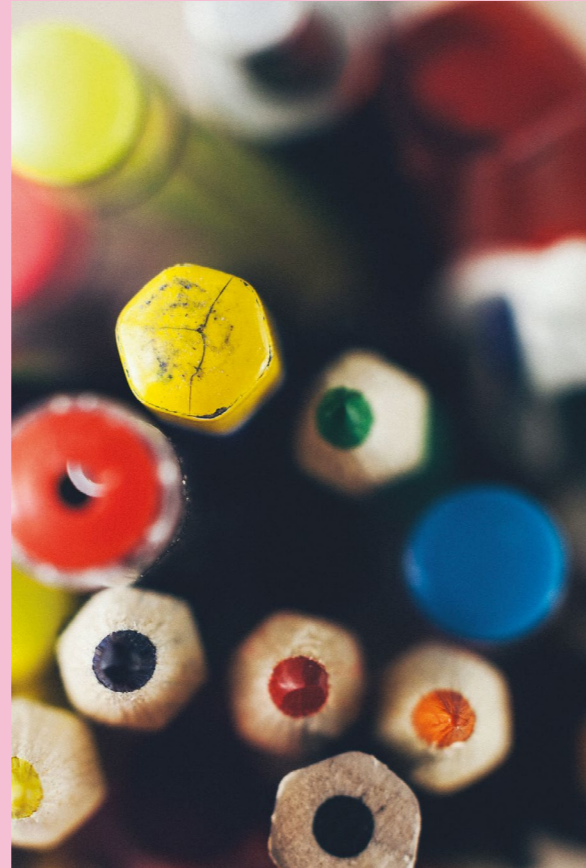
Flinders' education degrees work closely with schools and relevant organisations to ensure the most relevant and rigorous experiences. Our students are immersed in practical activities and micro-teaching situations exploring the application of teaching theory in practice, so graduates are indeed 'classroom ready'.

"The experience I had at Flinders definitely set me up for success in my current career as an early childhood teacher. Just as children can learn so much from Mother Nature, so do we as adults. Flinders' beautiful natural environments provided me with lots of inspiration, motivation and space to think, learn and reflect. I was provided with endless resources and opportunities to learn and experience, and during placements was very well supported, with course coordinators that listened and helped me every step of the way."

Yu (Catherine) Li

Bachelor of Education (Early Childhood) graduate

Education



Excite and ignite young imaginations

We need more educators. We need people who will guide and teach the next generations of Australians. A career in education is a career filled with inspiration and a sense of achievement. This is your chance to build the future.

A rewarding career

Education is a fast-growing sector, with great job opportunities. With over one million people already employed, becoming an educator means joining an industry with long-term career prospects.

Teaching jobs are on the rise

Projected employment growth in teaching is strong through to November 2026:

- Early Childhood Teachers – 21.6%
- Middle School Teachers – 21%
- Special Education Teachers – 13.5%
- Primary School Teachers – 5.1%
- Secondary School Teachers – 3.7%

Source: 2022 National Skills Commission Projections

No. 1 in SA in Education & Training for learning resources, overall educational experience, skills development, student support and teaching quality*

* The Good Universities Guide 2023 (undergraduate), public SA-founded universities only

5 stars in Education & Training for median graduate income and learning resources**

** The Good Universities Guide 2023 (postgraduate)

Meet Harrison



Preparing for a rewarding, lifelong career

Harrison Paay is ready to enter the education industry with confidence thanks to his experience studying Flinders' Bachelor of Education (Secondary).

As a high school student, Harrison learned the value of helping those around him and forming quality relationships, which ultimately influenced his career choice.

"The decision to pursue a career in secondary education was underpinned by my experiences as a Year 12 student", says Harrison. "I was able to develop stronger relationships with my teachers, which ultimately brought the best out of me."

The knowledge and skills Harrison has developed throughout his degree have not only benefited his teaching career, but also his non-teaching role at Woodcroft College and his volunteer work in community sport.

Discover Harrison's full story



"In my time studying Education at Flinders, I have learned that clear communication is imperative for success", says Harrison. "In my everyday life, where I am heavily involved in school sport and president of a volleyball club, having effective communication skills has enabled me to engage and develop relationships with a diverse range of people."

Harrison Paay

Bachelor of Education (Secondary)

Bachelor of Early Childhood Education (Birth – 8)

This degree seeks to equip graduates with the skills to implement considered and purposeful experiences that cultivate young children’s play, learning and development in the twenty-first century. In viewing our graduate teachers and young children as strong, powerful and rich in potential, the program delivers a sound understanding of the importance of play, early learning curriculum and pedagogies, social and emotional development and a contemporary understanding of documentation and leadership.

SATAC code (Bedford Park)	244491	4 years full-time
Prerequisites	None	Part-time available
Assumed knowledge	None	Deferrable
2024 selection rank	70.00	
Guaranteed entry selection rank	80.00	
TAFElink	Adv Dip or above	
Adjustment factors	Yes	

See page 10 for teaching requirements.

- You'll qualify to work with children in early childhood and early primary school settings.
- You'll gain rich experience with 90 days of placement working in a range of birth-8 settings.
- Choose your own placement pathway to gain experience with children in birth-5, preschool and school, in a way that follows your career aspirations.
- Personalise your degree by choosing a specialist curriculum area and multiple elective options.
- Upon successful completion (*including the Literacy and Numeracy Test for Initial Teacher Education) you will be eligible to apply for registration as an early childhood teacher with the Teachers Registration Board of South Australia.

Career opportunities

Although the majority of education graduates go on to employment as educators in the public or private sector, some choose to follow other pathways.

Potential occupations include:

- early childhood teacher
- education officer
- education support officer
- childcare educator
- in-home nanny
- out of school hours care (OSHC) educator/director
- language, literacy and numeracy teacher/assessor.

Potential employers include:

- childcare centres
- kindergartens
- preschools
- early learning centres
- junior primary schools
- OSHC
- government education departments
- government and private industry settings.

Bachelor of Education (Primary)

This future-focused degree empowers graduates to weave together knowledge and skills, mind and context to inspire and educate young minds. Through a rigorous course of study integrated with professional practice, students develop their command of critical ideas and skills, develop their professional identity and build their capacity to create knowledge for the future alongside parents/carers, other professionals and the wider community.

SATAC code (Bedford Park)	244501	4 years full-time
Prerequisites	None	Part-time available
Assumed knowledge	None	Deferrable
2024 selection rank	70.00	
Guaranteed entry selection rank	80.00	
TAFElink	Adv Dip or above	
Adjustment factors	Yes	

See page 10 for teaching requirements.

- Learn to create supportive, safe and enriching learning environments and make a positive difference in the lives of students.
- Integrate your knowledge and skills with professional experience placements in primary schools.
- Develop expertise and confidence to teach innovative STEM education.
- Upon successful completion (including the Literacy and Numeracy Test for Initial Teacher Education) you will be eligible to apply for registration with the Teachers Registration Board of South Australia.

Career opportunities

Although the majority of graduates seek employment as teachers in the public or private sector, some follow other pathways.

Potential occupations include:

- primary teacher
- education officer
- literacy/numeracy teacher/leader
- tutor
- graduate administrative officer
- out of school hours care (OSHC) director.

Potential employers include:

- government, Catholic or independent schools
- private industry settings.

Bachelor of Education (Secondary)

This degree possesses an incredible range of teaching area options, helping graduates to truly follow their passions. Teachers are no longer content-specific delivery agents, and this course acknowledges these aspects and emphasises teaching to promote engaged learning with further active, experiential, authentic, ‘hands on’ learning both at the individual and collaborative level.

SATAC code (Bedford Park)	244511	4 years full-time
Prerequisites	None	Part-time available
Assumed knowledge	None	Deferrable
2024 selection rank	70.00	
Guaranteed entry selection rank	80.00	
TAFElink	Adv Dip or above	
Adjustment factors	Yes	

See page 10 for teaching requirements.

- You'll gain the knowledge and skills required to start a career as a teacher in secondary school.
- You'll graduate work-ready, with teaching placements in secondary schools where you can learn practical skills, put theory into practice and develop important relationships with students, parents and colleagues.
- Upon successful completion (including the Literacy and Numeracy Test for Initial Teacher Education) you will be eligible to apply for registration with the Teachers Registration Board of South Australia.

Career opportunities

Although the majority of education graduates go on to employment as educators in the public or private sector, some choose to follow other pathways.

Potential occupations include:

- secondary teacher
- education officer
- graduate administrative officer
- youth and children’s support officer
- tutor
- student support officer (SSO).

Potential employers include:

- government, Catholic or independent schools
- private industry settings.

Bachelor of Education (Secondary Health and Physical Education)

This degree not only offers exceptional training for future health and physical educators in school settings, but also responds to demand for highly trained educators from the sports, recreation and outdoor education industries. From the first day of study, our students are immersed in practical activities and micro-teaching situations exploring the application of teaching theory in practice. The program works closely with schools and relevant organisations to ensure the most relevant and rigorous experiences, so graduates are indeed ‘classroom ready’.

SATAC code (Bedford Park)	244521	4 years full-time
Prerequisites	None	Part-time available
Assumed knowledge	None	Deferrable
2024 selection rank	70.00	
Guaranteed entry selection rank	80.00	
TAFElink	Adv Dip or above	
Adjustment factors	Yes	

See page 10 for teaching requirements.

- You'll major in physical education or health education, minor in the other, and be able to elect a second minor to increase employment opportunities.
- You can undertake professional experience placements in secondary schools where you can learn practical skills and put theory into practice.
- Your placements will help you to develop and consolidate your teaching knowledge and skills in order to meet the necessary national standards for registration as a teacher.
- You'll be taught vital interpersonal skills that will help you form cooperative and effective professional relationships with students, staff and parents.
- Upon successful completion (including Literacy and Numeracy Test for Initial Teacher Education) you will be eligible to apply for registration with the Teachers Registration Board of South Australia.

Career opportunities

Although the majority of education graduates go on to employment as teachers in the public or private sector, some choose to follow other pathways.

Potential occupations include:

- secondary teacher
- education officer
- graduate administrative officer
- sports coach
- educational officer within a sporting or recreational organisation.

Potential employers include:

- government, Catholic or independent schools
- private industry settings
- Department for Education.



The fastest way to become a secondary health and PE teacher in SA*



Flinders' Bachelor of Education (Secondary Health and Physical Education) is a four-year degree that qualifies you to apply for registration as a health and physical education secondary teacher in South Australia. This is the only degree in SA allowing you to become a qualified health and physical education teacher in the field in just four years.

With demand for quality health and physical education teachers high, you'll gain the skills employers are seeking with our nationally and internationally recognised transformative curriculum, based on contemporary research understandings of how to prepare effective teachers.

So what are you waiting for? Seize the opportunity to ignite a passion for health, physical education and the outdoors in students for the rest of their lives.

* at undergraduate level

Bachelor of Inclusive and Specialised Education (Early Childhood, Primary and Secondary)

These degrees not only recognise the importance of inclusive education in today's society, but also the need for specialised expertise required to teach diverse learners. In addition to becoming literacy and numeracy specialists (Early Childhood and Primary), students will graduate with the agency and confidence to apply and adapt their knowledge and skills across a range of contexts, working effectively with the full range of learners in contemporary schools.

SATAC code (Early Childhood)	244531	4 years full-time
SATAC code (Primary)	244541	Part-time available
SATAC code (Secondary)	244551	Deferrable
Prerequisites	None	
Assumed knowledge	None	
2024 selection rank	70.00	
Guaranteed entry selection rank	80.00	
TAFElink	Adv Dip or above	
Adjustment factors	Yes	

- Learn to create inclusive and specialised, challenging curriculum, using technology and teaching skills to extend all students.
- Become confident advocates for all learners to achieve high-quality and equitable outcomes, for all students and their families.
- Get work-ready with professional experience placements in schools and/or early childhood settings, where you can learn practical skills, put theory into practice and develop important relationships with students, parents and colleagues.
- Upon successful completion (including the Literacy and Numeracy Test for Initial Teacher Education) you will be eligible to apply for registration with the Teachers Registration Board of South Australia.

Career opportunities

Although the majority of graduates seek employment as teachers in the public or private sector, some follow other pathways.

Potential occupations include:

- early childhood, primary or secondary teacher
- specialised or gifted education teacher
- literacy/numeracy teacher/leader
- education officer
- tutor.

Potential employers include:

- government, Catholic or independent schools
- special education settings
- early childhood educators – kindergartens, childcare or early learning centres
- government departments.

Requirements for teaching

Take the first steps towards your teaching career by ensuring you meet the following requirements.

Inherent requirements

The Australian Government has introduced the Literacy and Numeracy Test for all initial teacher education students to ensure they have the high level of personal literacy and numeracy skills required of teachers. For further information, including registration details, please check the test administrator's website at: teacheredtest.acer.edu.au

For further details and additional inherent requirements visit:

finders.edu.au/study/courses/education-inherent-requirements

Entry requirements

All prospective students interested in studying an initial teacher education course in South Australia are required to complete a non-academic assessment task known as a Teaching Capabilities Statement. This is a requirement of the Australian Institute for Teaching and School Leadership (AITSL) and supports the national priority to ensure those entering the teaching profession have the personal qualities to best support learners and graduate as classroom-ready, high-quality teachers.

The Teaching Capabilities Statement will be requested as part of the application process through SATAC.

finders.edu.au/study/courses/teaching-capabilities-statement

Early childhood, primary, secondary, inclusive and specialised...how do I choose?

In the first instance, think about how you would like to work with your areas of interest and expertise with the children in your class. Early childhood and primary teachers work with the whole curriculum but stay with a particular group of children for the year. Secondary teachers specialise in subject areas, often working with a larger number of students. Special education teachers work across these contexts but also have a very specific skill set to support their work with adolescents in the secondary setting.



"Flinders prepared me for my career, as I was able to learn what classrooms were like through my professional placements. I learnt so much being in a classroom and observing my mentors. By teaching and receiving feedback from supportive mentors, I was able to learn how to become a teacher in a positive environment."

Airlie Barraclough

Bachelor of Education (Primary) graduate

Bachelor of Sport, Health and Physical Activity

This degree will see you graduate with the skills to become an effective professional in sport and physical activity careers and give you a wide knowledge base in areas including health, tourism, nutrition, disability and business. You'll develop an understanding of the impact of sport and physical activity in the context of a healthy lifestyle and prepare yourself for a range of roles within the sports industry.

SATAC code (Bedford Park)	224741	3 years full-time
SATAC code (Festival Plaza)	284621	Part-time available
Prerequisites	None	Deferrable
Assumed knowledge	None	
2024 selection rank	65.00	
Guaranteed entry selection rank	80.00	
TAFElink	Cert IV or above	
Adjustment factors	Yes	

- Your studies will prepare you for a career in the sport development, sport coaching, leisure, health, sport and event management industries, and provide a pathway to further studies in physical education teaching through the Master of Teaching courses.*
- You'll become an effective sport and physical activity professional and advocate. You can choose unique topics in high performance sports coaching, outdoor education and exercise in musculoskeletal physiology.
- There are opportunities to take your studies overseas with a student exchange program.
- You'll develop important contacts and networks with local and national sporting clubs, associations, and health and tourism marketing organisations.
- You'll have the option of majoring in active and healthy communities, applied sport science, outdoor education or sports business.

Career opportunities

Your degree could open up a range of employment opportunities, including:

- association and clubs development officer
- education officer
- PE teacher*
- umpiring coordinator
- council sport and recreation officer
- sport coach
- sport development officer.

Potential employers include:

- schools*
- local and state government
- sporting clubs and associations such as the SANFL, Tennis SA and Bicycle SA.

* Please note: This course does not lead to teacher registration in South Australia; however, successful completion may provide a pathway option into the Master of Teaching (2 years or 1.5 years accelerated mode). Contact the University for further details.

Starting at Flinders

One of the world's top universities, Flinders offers students a supportive, inclusive education in an unrivalled study environment.



Flinders is ranked in the top 2% of universities in the world*

* THE World University Rankings 2023 as a percentage of the total number of universities in the world according to the International Association of Universities

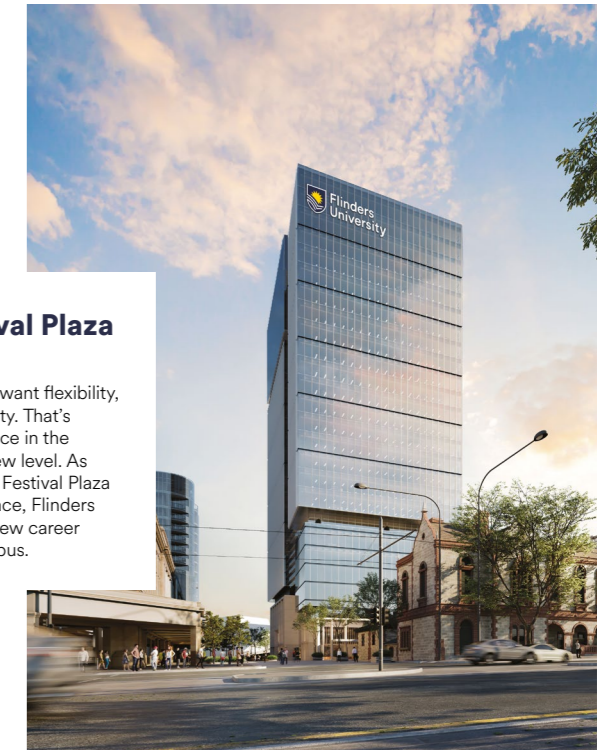
This is Flinders

Flinders' Adelaide campuses include the Bedford Park campus, featuring an award-winning hub and plaza, with retail, food outlets and a state-of-the-art sport and fitness centre.

Flinders at Tonsley houses state-of-the-art facilities and close links to industry. In 2024, our Victoria Square CBD campus will move to the stunning new Flinders at Festival Tower on North Terrace, right beside the Adelaide Railway Station.

Take a virtual tour of Flinders University and explore our amazing locations. It's the next best thing to being here!

[Flinders.edu.au/vr](https://flinders.edu.au/vr)



Flinders at Festival Plaza – opening 2024

Flinders University students want flexibility, convenience and connectivity. That's why we're taking our presence in the Adelaide CBD to a whole new level. As an anchor tenant in the new Festival Plaza development on North Terrace, Flinders will offer new courses and new career pathways in a new city campus.

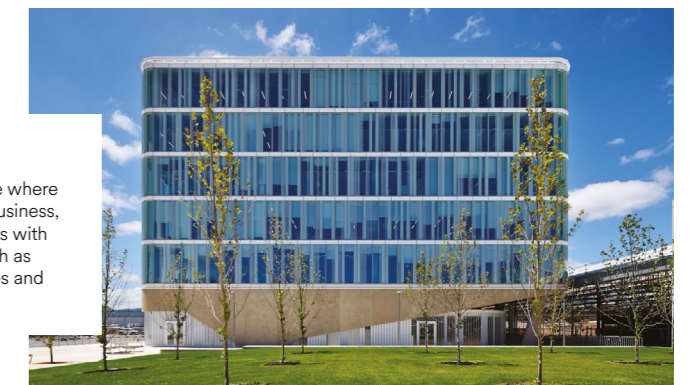


Bedford Park

Flinders' huge main campus features an award-winning hub and plaza, with retail, food outlets and a state-of-the-art sport and fitness centre.

Tonsley

Flinders at Tonsley is a place where our students interact with business, and where business interacts with our researchers in areas such as engineering, medical devices and nanoscale technologies.



Getting to Flinders

Transport options

The Flinders Railway Line gets you from the CBD to Tonsley in a super-fast 20 minutes, or to Bedford Park in just 22 minutes. And with free Campus Connector and Tonsley Link bus services running 7am – 6pm Monday to Friday, getting to and from your studies is simple. You'll be able to schedule your day without worrying about missing a single lecture!

flinders.edu.au/loop-bus

Plan your trip to Flinders:

adelaidemetro.com.au/routes/flndrs

The Flinders railway line is now open

The new Flinders train line has made travel easier and more convenient than ever, linking Bedford Park to our Tonsley campus and the Adelaide city centre, now just 22 minutes away.

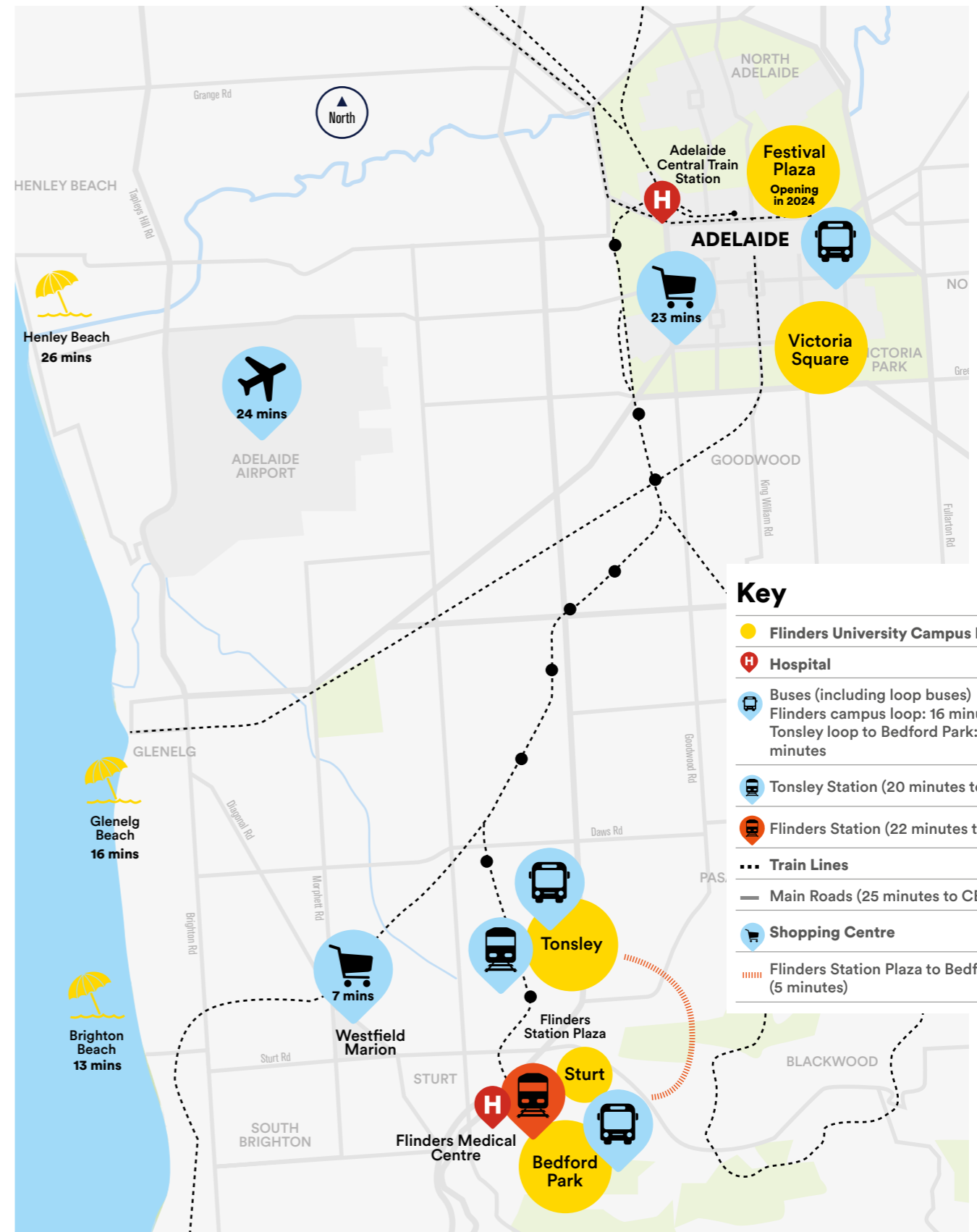
A new link from the north

Opened in June 2022, the electrified Gawler Rail Line provides services from the northern suburbs to the CBD, with express services expected to take around 48 minutes from Gawler to the CBD.

Plan your trip to Flinders CBD:

adelaidemetro.com.au/routes/gawc

Gawler to Festival Plaza in 48 minutes



Get more out of your study

Combined degrees

Combining your degree with a qualification in another discipline will give you more expertise and expand your career prospects. Studying a combined degree at Flinders will help you stand out from the crowd. A combined degree is a combination of two Flinders bachelor degrees. As a combined degree graduate you will have two qualifications in just one to one-and-a-half years of extra study.

There are dozens of combinations available, so why not explore your interests and find out where a combined degree could take you?

Our combined degree programs are designed to enhance your educational, academic and professional qualifications while minimising the cost and length of your studies. Flinders' combined degrees allow you to undertake in-depth study in exciting combinations that aren't usually available in single degrees.

finders.edu.au/combineddegrees

Combine your Bachelor of

Criminology with

Law and Society, International Relations and Political Science

Laws and Legal Practice with

Arts, Business, Criminology, Psychology, International Relations and Political Science

Medical Science with

Engineering (Biomedical) (Honours)

Psychological Science with

Criminology

Business (Human Resource Management)

Business (Marketing)

Sport, Health and Physical Activity

Languages

Science (Forensic and Analytical Science) with

Archaeology

Criminology

Begin your journey to a successful career

Flinders diplomas

Flinders' diploma-level qualifications give you the chance to experience university life without having to commit to long-term study.

The one-year Diploma in Business, Diploma in Sports Management, Diploma in Laws, or Diploma in Arts give you the chance to explore a range of interests, and successful completion allows you to apply for up to one year of credit towards a range of bachelor degrees, and guaranteed entry to the following courses:

- Bachelor of Archaeology
- Bachelor of Arts
- Bachelor of Business
- Bachelor of Business (Human Resource Management, International Business, Management, Marketing, Sports Management)
- Bachelor of Business Economics
- Bachelor of Creative Industries (Digital Media, Film and Television, Interactive Design, Theatre and Performance, Writing and Publishing, Festivals and Arts Production)
- Bachelor of Disability and Community Inclusion
- Bachelor of Disability and Developmental Education
- Bachelor of Engineering Science
- Bachelor of Information Technology
- Bachelor of International Relations and Political Science
- Bachelor of Laws
- Bachelor of Laws (Honours)
- Bachelor of Laws and Legal Practice
- Bachelor of Laws and Legal Practice (Honours)
- Bachelor of Science

Standard University admission requirements apply.

The Diploma in Sports Management will teach you the core skills needed to begin a career in sports management, backed by over 100 hours of practical and hands-on training with Port Adelaide players, management and staff.

The Diploma in Language offers a solid foundation for learning and using a language of your choice, and will help you develop cross-cultural knowledge and skills that are invaluable in international workplaces.

finders.edu.au/diplomas

Pathways to study

Whether you are a school leaver or returning to study at a later date, there are many ways to gain admission to Flinders University. Explore your options and find the entry path that's right for you.

If you have secondary education

Year 12 entry

Most Year 12 applicants enter university via the traditional entry method, where offers are made to eligible applicants with the highest selection rank until all places in the degree are filled. Your selection rank is used by Flinders to assess your admission to a course and is based on your ATAR plus any adjustment factors for which you are eligible.

finders.edu.au/year12

Guaranteed entry

If you achieve an ATAR equal to or above the published guaranteed entry selection rank (and you meet course prerequisites) you will be guaranteed a place at Flinders. We offer guaranteed entry for most courses.

Indigenous Admission Scheme

The Indigenous Admission Scheme provides an alternative pathway for Aboriginal and Torres Strait Islander people, who may not have been able to gain entry to university by traditional means, with the opportunity to study at Flinders.

See page 28 for further details.

Elite Athlete Pathway

If you've officially represented your school or state at a national level competition, we'll consider your school's recommendation about your academic potential when you apply.

finders.edu.au/study/sport/elite-athletes

Research Project B Pathway

If you have strong results in the Research Project B subject you will be considered for entry into Flinders on the basis of your Year 12 results and Research Project B performance.

finders.edu.au/study/pathways/year-12-entry/research-project

School Recommendation Program

We may consider your school's recommendation about your academic performance as part of your admission into Flinders.

uniTEST

If you're in Year 12, uniTEST is available to enhance your chances of getting into Flinders. We will select students based on their Year 12 results (60% weighting toward the ATAR selection rank) and uniTEST results (40%). Flinders will also consider applicants based on their uniTEST results (100%) as a standalone entry score (subject to SACE completion and any course prerequisites or specific admissions requirements). If you take the test and don't do well, we will only consider your highest selection rank.

finders.edu.au/unitest

If you haven't achieved the results you expected

If you haven't achieved the results you expected in Year 12, there are a number of pathways to your preferred degree. You can start studying one course and move to another via internal transfer or Flinderslink.

finders.edu.au/study/pathways/flinderslink

Pathways to study

If you have work and life experience

Foundation Studies

The Foundation Studies program has been designed to introduce you to university study in a supportive learning environment. Open to people from all backgrounds, Foundation Studies provides a pathway to gain entry to most degrees at Flinders and offers guaranteed entry into some degrees.

flinders.edu.au/study/pathways/foundation-studies

Military pathways

Use your military service in the Australian Defence Force as a pathway to a Flinders University degree.

flinders.edu.au/study/pathways/military-veterans

Special Tertiary Admissions Test (STAT)

Adult entry to university via the Special Tertiary Admissions Test (STAT) enables people aged 18 years and over to apply to study at Flinders. Applications are made via SATAC.

satac.edu.au/stat

Alternatively, you may wish to consider an undergraduate certificate or diploma. These shorter courses allow you the opportunity to explore your interests and to progress to further study. Certificate courses are Commonwealth supported.

flinders.edu.au/pathways

If you have some higher education

Tertiary Transfer

If you have completed at least one semester of full-time equivalent study at university, you may be able to transfer to study at Flinders University using your grade point average (GPA).

TAFElink

Flinders offers guaranteed entry to selected degrees for applicants who have completed a TAFE/VET Certificate IV or higher-level qualification, as long as degree prerequisites are met.

flinders.edu.au/tafelink

TAFE SA Dual Offers

Flinders University together with TAFE SA offer dual offer pathways in various disciplines.

Work Integrated Learning

When it comes to landing a job, practical placements can give you the edge you need to succeed.

Flinders' Work Integrated Learning (WIL) will improve your employability by helping you better understand the day-to-day skills employers are looking for, and by giving you the chance to gain real experience in a workplace environment directly related to the course you're studying.

You might take on a work placement or internship, gain hands-on experience through field education, or get involved in projects with industry or community organisations.

Your WIL experience will be designed to help you gain that edge.

[Flinders.edu.au/WIL](https://flinders.edu.au/WIL)

Student support

Whatever you decide to study at Flinders, we're always here to help you succeed.

Careers & Employability Service

The Careers and Employability Service helps give you the edge in your career. CareerHub, our online employment portal, offers personalised job opportunities, career planning, programs to help you broaden your skills and experience, access to employer events and career-related resources. Whatever you are studying, CareerHub can help you find your direction and start your career.

flinders.edu.au/careers

Flinders Connect

Flinders Connect can help with everything from enrolment and fees to exams and graduation. You can also access Flinders Connect for specialist services in admissions, careers and IT help. A range of support services is also available.

flinders.edu.au/flindersconnect

Flinders Library

Our extensive library is more than a book repository. We provide a range of services such as computing and printing, document delivery and one-on-one librarian appointments for assistance with search strategies and finding resources for your assignments.

library.flinders.edu.au

Flinders Living

Flinders is the only university in Adelaide that gives you the opportunity to live on campus, and both University Hall and Deirdre Jordan Village are located within the Bedford Park campus. The wide range of social, sporting and community activities also enhances the student experience at Flinders Living.

flinders.edu.au/living

Flinders University Student Association

The Flinders University Student Association (FUSA) continues a long tradition of active student involvement and represents the rights and interests of students. FUSA manages social events, non-sporting clubs and societies, and the student publication Empire Times, and helps with academic, administrative and welfare issues.

fusa.edu.au

Health, Counselling & Disability Services

Managing your health is important. We have facilities and services available to help you look after your physical and mental health.

flinders.edu.au/hcd

Horizon Award

The Flinders Horizon Award program sits alongside your academic studies; it is an innovative program that provides further opportunities to develop your professional skills and gain new experiences and insights that will benefit you now and in your future career.

flinders.edu.au/horizon

Transition to university

Starting at university is a big step; let's make it easier. The Student Learning Centre provides a range of services from writing and mathematics support to assistance with study and time-management skills.

students.flinders.edu.au/study-support/slc

Yungkurinthe Student Engagement

Yungkurinthe Student Engagement is committed to increasing Aboriginal and Torres Strait Islander student access, participation, retention and success at Flinders University. Providing a range of services and supports for Aboriginal and Torres Strait Islander students, our team of highly qualified staff is dedicated to supporting you throughout your student journey.

flinders.edu.au/study/indigenous-students

Indigenous Admission Scheme

The Indigenous Admission Scheme provides an alternative pathway for Aboriginal and Torres Strait Islander people, who may not have been able to gain entry to university by traditional means, with the opportunity to study at Flinders.

Are you eligible?

To be eligible for the Indigenous Admission Scheme you must be an Aboriginal or Torres Strait Islander person in accordance with the Commonwealth definition, which requires you to:

- be of Aboriginal or Torres Strait Islander descent, and
- identify as an Aboriginal or Torres Strait Islander, and
- be accepted as an Aboriginal or Torres Strait Islander in the community in which you live or have lived.

You may be currently studying Year 12 or be a non-school leaver.

How to apply

1. Apply for the course you want to study through the South Australian Tertiary Admissions Centre (SATAC). You will get an application number from SATAC that you will need for your Indigenous Admission Scheme application form.
2. Complete the Indigenous Admission Scheme application form online (finders.edu.au/indigenousadmissions). If you are having trouble completing an online application, you can request a paper-based application via ias@finders.edu.au or call us on 08 8201 3033.
3. An interview is part of the application process, but you will be notified about this.

Application and interview dates

First round applications close late November and second round applications close early January for semester 1. For our midyear intake to a number of courses, applications close in June.

finders.edu.au/indigenousadmissions



“I originally chose Flinders as they have one of the best facilities for future teachers and fantastic student engagement. Studying at Flinders has been a wonderful experience that has given me the opportunity to discover what I truly want into the future while also providing me with support in every way imaginable. Flinders and Yungkurinthe have given me the opportunity to meet others with similar ambitions and goals as myself and find the benefit of an education in places I would never have thought to look. As a proud Indigenous woman, I want to use my degree to work in First Nation communities to help our young people make it through their high schooling experience and onto their own future aspirations.”

Emilee Pyrke

Bachelor of Arts,
Conditional entry to Master of Teaching (Secondary)

Study abroad/scholarships

Over 450 scholarships worth \$2.4 million in total – ranging from \$1,000 to \$20,000.

Take your studies overseas

Why wait until you graduate to explore the world? Flinders' Learn Without Borders could see you studying overseas, gaining a unique perspective and immersing yourself in a different culture, language and lifestyle. Our global study programs are designed to allow students to take their Flinders study overseas and earn academic credit toward their Flinders program. With 70+ overseas partner universities, why wait until you graduate to see the world?

finders.edu.au/learn-without-borders

Explore Flinders scholarships

Flinders offers a generous range of scholarships for students in undergraduate courses. With over 450 available scholarships, including scholarships to students from low socio-economic backgrounds, students from rural and regional areas, and Aboriginal and Torres Strait Islander students, you may be eligible for support that will help you achieve your goals at university.

finders.edu.au/scholarships

“I always knew I wanted to study overseas at some stage during my degree. A semester exchange gave me the chance to complete topics that weren't available in my home university and experience life in a city that is very different to my own. Having completed a semester overseas, I now have an edge over the countless other students that are completing the same degree as me and have formed memories that will always stay with me.”

Annelise Smith

Bachelor of Business
(Advanced Leadership)

“The Wyndham Richardson Scholarship Fund has been invaluable to reduce the financial pressure during studies, especially now that I am in the later years of my degree.”

Ryan Rowston

Bachelor of Computer Science

*Wyndham Richardson Scholarship
Fund recipient*

Teaching

Contact us

Our friendly staff are available to answer your questions:

1300 354 633 (local call cost) | askflinders@flinders.edu.au | flinders.edu.au/ask

International students should contact:

+61 8 8201 2727 | flinders.edu.au/international | INTLAdmissions@flinders.edu.au