

2023



Health

Medicine

Medicine	4
----------	---

Starting at Flinders

Location & map	10
Combined degrees	16
Flinders Diplomas	16
Pathways to study	17
Student support	19
Indigenous Admission Scheme	20
Overseas studies & scholarships	21
How to apply	22
Key dates	22
Fees & charges	22
Glossary	23

The following pages feature undergraduate degree programs and information for domestic students, including SATAC codes, selection ranks and more. For international CRICOS codes, visit flinders.edu.au/international

Flinders University acknowledges the Traditional Owners and Custodians of the lands on which its campuses are located, these are the Traditional Lands of the Arrernte, Dagoman, First Nations of the South East, First Peoples of the River Murray & Mallee region, Jawoyn, Kaurna, Larrakia, Ngadjuri, Ngarrindjeri, Ramindjeri, Warumungu, Wardaman and Yolngu people. We honour their Elders past, present and emerging.

At Flinders, it's all about your life-changing health career.



Choose your health degree

Flinders University offers a range of future-focused health degrees that will allow you to follow your interest across areas as diverse as medicine, nursing, health sciences, audiology, social work and more. Choose a degree that reflects your passions and graduate with the skills and knowledge to take your place in an ever-changing world.

Take your place in a critical industry

The importance of health workers to our society has never been more evident, and projected employment growth through to November 2026 looks strong across many health specialities.*

* National Skills Commission 2022 occupation projections

Projected growth through to 2026

Audiologists and speech pathologists/therapists – 34.7%
Health professionals – 15.5%
Medical practitioners – 11.7%
Midwives – 21.6%
Occupational and environmental health professionals – 15.9%
Physiotherapists – 28.7%
Psychologists and Psychotherapists – 13.3%
Registered nurses – 13.9%
Social workers – 23.2%

Be taught by leaders in health and care

Flinders' health and care degrees are taught by highly qualified academics who are active in their respective fields and have the practical skills and industry networks to ensure that you graduate more than ready for the next step in your career path.

Gain real-world experience

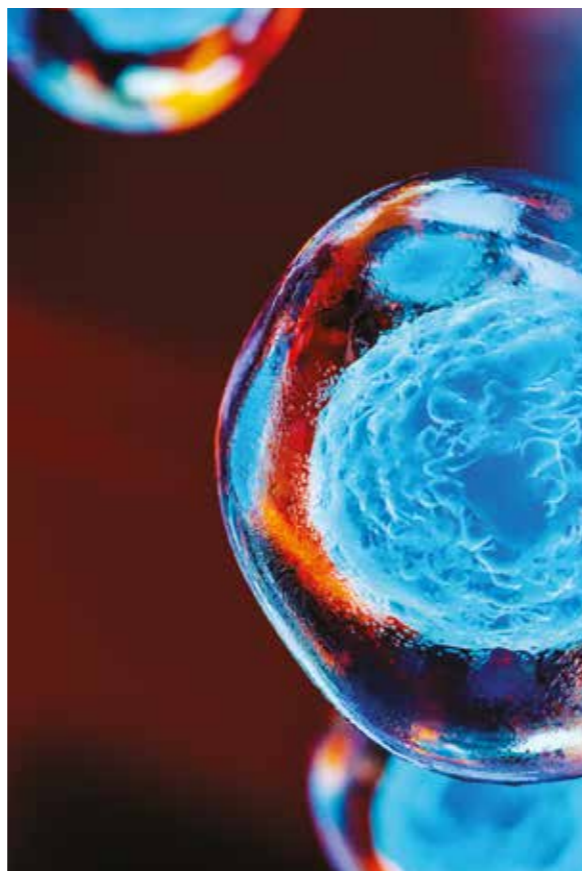
Flinders' Work Integrated Learning (WIL) enables you to gain work experience while you study. You'll have the opportunity to gain real-world experience through placements, practicums, field studies and simulated workplace settings and assessment activities. Flinders aims to provide each and every student with access to a WIL opportunity during their studies.

"My degree is really vibrant and dynamic. You do a lot of practical experience in the laboratories and the equipment is really good. The lecturers and tutors are confident in their teaching and they are keen to teach you. We can ask anything from them and they help you negotiate your work."

Kalpana Dharmasiri

Graduate, Bachelor of Nursing Preregistration

Medicine



Hold life and health in your hands

Becoming a medical practitioner gives you the chance to have a profound impact on the health of the people around you. Imagine the satisfaction you'll feel as you successfully treat a sick child or treat an injury.

By studying medicine, you'll be working towards becoming a respected, vital member of our community.

Broad opportunities

Medical practitioners are in high demand, and with a wide variety of opportunities, you could work towards a career in hospitals, general practice and medical centres across Australia.

Study for success

New medical breakthroughs occur almost daily, and we need practitioners with up-to-the-minute training based on the latest medical research. Flinders can deliver that training.

No. 1 in Australia in Medicine for full-time employment*

* The Good Universities Guide 2022 (postgraduate)

“My medical education at Flinders was innovative, almost revolutionary, personalised, rigorous, research orientated, and has given me a welcome legacy of lifelong enquiry.”

Professor Chris Baggoley AO

Medicine graduate, Chief Medical Officer of Australia 2011-2016

MEDICINE

Bachelor of Clinical Sciences/Doctor of Medicine

Bachelor of Clinical Sciences/Doctor of Medicine (Charles Darwin University/ Flinders University, Darwin)

This double degree program enables school leavers without an undergraduate degree† to pursue a career in medicine.

The program provides a high standard of academic, clinical and professional medical training to equip graduates with the skills necessary to take up positions as hospital interns and thereby qualify for medical registration in Australia.

† Applicants for the double degree in Adelaide must not have a record of study at a higher education level. Applicants for the CDU/Flinders double degree in Darwin may have completed up to one year of higher education study.

SATAC code	214941
SATAC code (Darwin)	104661
Prerequisites	Yes*
Assumed knowledge	None
2022 selection rank	NA**
Guaranteed entry selection rank	NA
Adjustment factors	UES*

6 years full-time

* Applicants must complete the University Clinical Aptitude Test for Australia and New Zealand (UCAT ANZ). Final ranking for a place is determined by combining scores from the applicant's Year 12 subject results that are used to calculate the ATAR (or equivalent) and their UCAT results. Only UCAT ANZ scores from tests held in July 2022 will be considered towards 2023 entry.

** It is expected that applicants will need to achieve a selection rank of 95 or above to be considered.

See flinders.edu.au/universities-equity-scheme for explanation of UES.

- You could complete a medical degree in just six years.
- Study clinical sciences for two years and begin your Doctor of Medicine (MD) studies in year three.
- Study in Adelaide or Darwin. If you're studying in Adelaide, you can choose either a health sciences or medical science focus in the clinical sciences degree.
- Flinders' medical and health sciences research is rated above world standard (Excellence in Research for Australia 2018).

Career opportunities

Your degree could open up a range of employment opportunities in urban, rural and remote settings, including:

- medical intern
- hospital medical officer
- medical specialist
- general practitioner.

Potential employers include:

- Flinders Medical Centre
- Royal Adelaide Hospital
- Lyell McEwin Hospital
- general practice clinics
- Mount Gambier and Districts Health Service
- Royal Darwin Hospital.



“Medicine interested me and when I found out about postgraduate pathways, I thought it was possible to get in and it was a way I could make a difference and help other people.

Everyone at Flinders here in the Northern Territory are really helpful. They're constantly checking in on us making sure we have all the resources we need; if we're struggling, they monitor us very closely. They'll pull us in and have a chat, they'll figure out the best way to help.”

Ethan Hill

Doctor of Medicine

Doctor of Medicine.

Graduate well prepared for the challenges of internship and future professional training.

The Flinders Doctor of Medicine (MD) is the cornerstone of the University's dynamic and highly regarded medical program.

The MD delivers outstanding clinical and academic training, and draws on the innovation and excellence that characterises the University's medical program.

Our degrees

Flinders University is recognised as a leader in medical teaching, and the curriculum of our medical program has been adopted by universities worldwide. All medical students at Flinders undertake the MD, which integrates clinical medicine with a strong underpinning in biomedical science.

Our innovation

Our Bedford Park-based students learn in Australia's first purpose-built academic medical centre – Flinders Medical Centre – where they are immersed in authentic, patient-centred clinical experiences from their first few weeks.

Flinders University was the first in Australia to develop a four-year graduate-entry medical program as an alternative to the traditional five-to-six-year courses. We were also the first to offer a full year of rural clinical practice and the first to offer a full medical program in the Northern Territory.

Our international links

Flinders has established partnerships with international institutions throughout Asia, Europe and the Americas. We have links with universities, colleges and research institutions which provide valuable opportunities for student and staff exchanges, joint research and teaching programs. Our international students represent a quarter of our overall students and come from over 90 countries globally.

We are current and active members of the International Network of Universities and Innovative Research Universities Australia, of which we are one of only nine universities in Australia represented.

Our Medicine program is one of a few that licences our curriculum nationally and internationally, and we are highly regarded for our innovative medical education.

Our community engagement

The Flinders medical program is embedded in health services across Australia – from Flinders Medical Centre to multiple regional, rural and remote communities in the Northern Territory, South Australia and Victoria. Flinders has a strong commitment to building the rural and remote health workforce by delivering innovative clinical placements in these areas.

Our commitment to diversity and equity

Flinders values diversity and equity, and encourages applicants from a variety of backgrounds. The MD is focused on providing you with an understanding of social accountability, and graduates are prepared with leadership qualities, knowledge and skills that enable them to practise in under-served communities.

Our commitment to Indigenous health

The Flinders MD recognises and values the contribution that Indigenous knowledge and Aboriginal and Torres Strait Islander doctors make to the health of our country. Our Aboriginal and Torres Strait Islander and non-Aboriginal and Torres Strait Islander academic staff will lead you to a greater understanding of this heritage, and teach you how to work safely and confidently in a multicultural society.

Our alumni and staff

Our alumni and staff are leaders in the field of medicine. Former students and staff of the Flinders medical program include Professor Nicola Spurrier (Chief Public Health Officer for SA Health), Professor Michael Kidd AM (Principal Medical Advisor and Deputy Chief Medical Officer with the Department of Health, Australia), Professor Chris Baggoley AO (Australia's Chief Medical Officer 2011-2016), Professor Paddy Phillips (Chief Medical Officer of South Australia), Professor Steve Wesselingh (Executive Director, South Australian Health and Medical Research Institute), Professor Air Vice Marshal (ret) Tracy Lee Smart, AO and Dr Richard Harris AO (2019 Australian of the Year), among others.



"The medical school is next to the Flinders Medical Centre, which means we have easy access to all the university teaching facilities and support services during clinical placements.

I was grateful lectures were delivered by clinicians who worked day in and day out in the relevant medical areas. The clinical placements in both urban and rural areas are the highlights of my degree. They give me the opportunity to work with and learn from my future colleagues, and to familiarise myself with professional standards and future employers. These placements have well prepared me for the transition from a medical student to a future doctor."

Keren Wu

Bachelor of Clinical Science/Doctor of Medicine

Find your own path.

There's more than one way to get into the Flinders Doctor of Medicine.

Flinders is committed to ensuring that people from all walks of life have an opportunity to study medicine. That's why Flinders offers a range of admission pathways that enable you to enter a medical degree, whatever your background.

Undergraduate entry

If you have completed Year 12 and wish to study medicine in Adelaide or the Northern Territory,* you can apply for admission to a double degree pathway which enables you to enter Flinders' medical program without having to complete a separate undergraduate degree first. This pathway enables you to complete a Bachelor of Clinical Sciences with the Doctor of Medicine (MD) in just six years. Note that a minimum GPA is required to progress from Clinical Sciences to the MD.

Graduate entry

Flinders University offers graduate entry to the MD in Adelaide and the Northern Territory, providing an alternative to the pathway from secondary school to an undergraduate medical course. The program enables you to graduate with a medical qualification in four years of full-time study.

* If studying in the NT, the Bachelor of Clinical Sciences is delivered by Charles Darwin University and the MD is delivered by Flinders University.

Health pathways

Flinders graduate sub-quotas

Up to 45 per cent of places in the Doctor of Medicine are for applicants who hold Flinders qualifications and meet the admission requirements. In addition, up to 30 per cent of places are reserved for applicants who hold Flinders degrees in medical science, paramedic science and public health. Information can be found at flinders.edu.au/md

Aboriginal and Torres Strait Islander applicants

A key priority of the Northern Territory and Commonwealth governments is to increase the participation of Aboriginal and Torres Strait Islander students in medical training. Flinders University's Aboriginal and Torres Strait Islander Entry Stream is available to Aboriginal and Torres Strait Islander graduates who wish to study medicine either in Adelaide or in the Northern Territory. For this stream, you may apply directly to Flinders University for graduate entry to the Doctor of Medicine without having to sit the Graduate Medical School Admissions Test.

Rural applicants

Consistent with Flinders University's commitment to improve the health of those in rural and remote areas, at least 36 per cent of Commonwealth supported places for graduate entry to the MD are reserved for students who come from a rural background. This includes a sub-quota of up to 24 places available each year for students from rural communities who apply to undertake the entire third year of the MD in one of four rural locations.

Northern Territory applicants

Flinders University, in partnership with Charles Darwin University, offers undergraduate and graduate entry to the Flinders Doctor of Medicine in Darwin through the Northern Territory Medical Program (NTMP). Whether you are a school leaver or university graduate in the Territory, the NTMP allows you to undertake your entire medical training in the Northern Territory. Places are only available to Australian citizens and permanent residents.



"I love that medicine at Flinders is very hands-on. The great amount of support we receive and the small class sizes allow our learning to be much more student focused, collaborative and easy to comprehend."

Sydney Ma

Bachelor of Clinical Sciences/
Doctor of Medicine

You may also be interested in...

Bachelor of Paramedic Science

Deliver best-practice patient care from site to hospital. This is an accredited degree for anyone seeking a career as a paramedic with an Australian state ambulance service or a research career in pre-hospital science.

SATAC code	224321	3 years full-time
2022 selection rank	97.10	Part-time available
Guaranteed entry selection rank	NA	Deferrable

Bachelor of Medical Science

This specialised degree covers areas such as biochemistry, biotechnology, microbiology, molecular biology, neuroscience and more.

SATAC code	214421	3 years full-time
2022 selection rank	85.00	Part-time available
Guaranteed entry selection rank	95.00	Deferrable

Bachelor of Public Health

Follow your passion, choosing distinctive learning pathways, from biomedical, research and social determinants of population health and equity to Indigenous health, economic factors and global approaches to health issues, such as obesity and heart disease.

SATAC code	244341	3 years full-time
2022 selection rank	70.00	Part-time available
Guaranteed entry selection rank	80.00	Deferrable
		Online

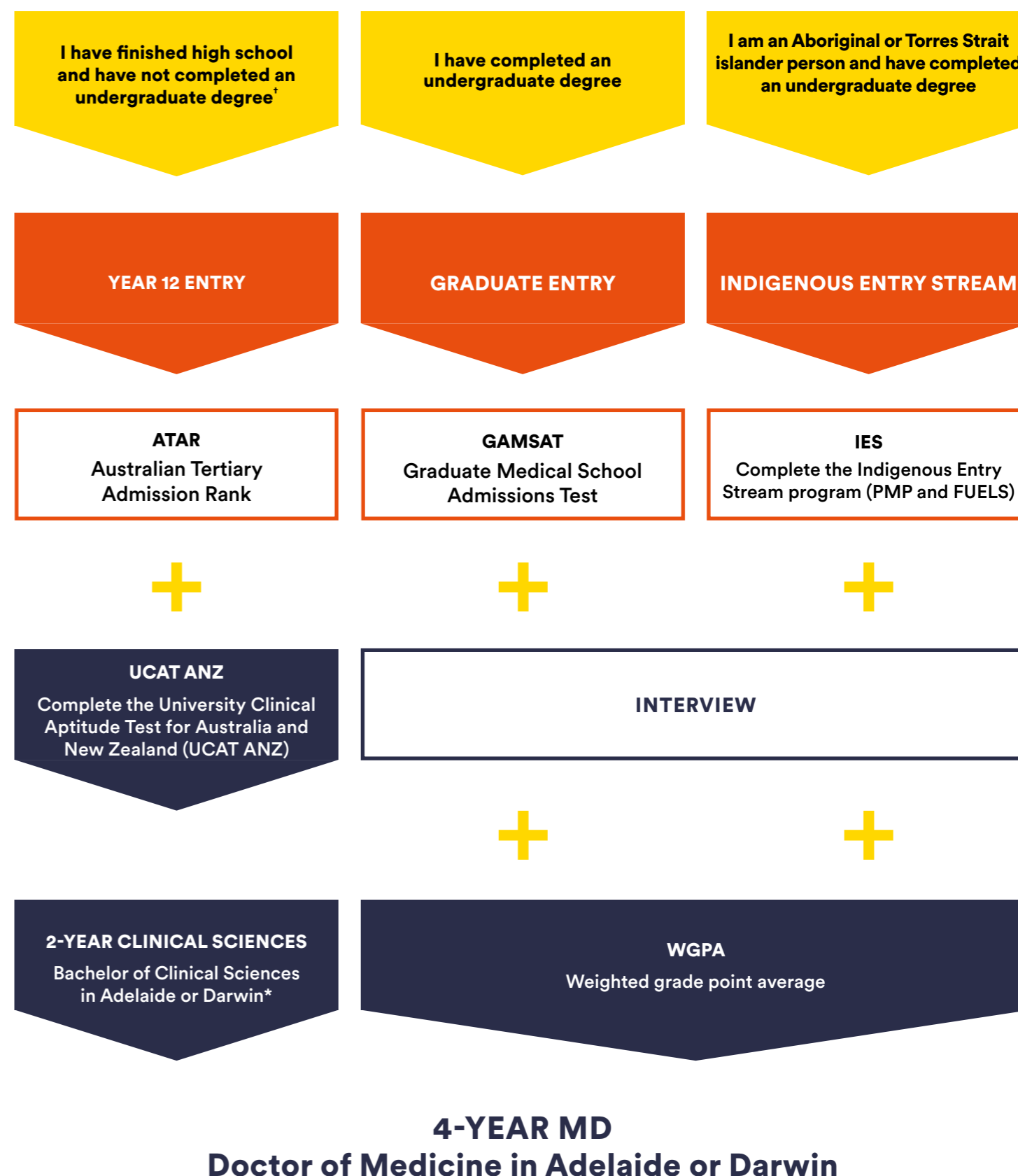
Combined degrees

Bachelor of Medical Science/Bachelor of Engineering (Biomedical) (Honours)

Combine degrees to advance healthcare technologies. Medical Science exposes you to the disciplines central to understanding human health and disease, while Biomedical Engineering applies engineering principles to human biology and advancing healthcare. By combining both, you'll graduate with greater career prospects and a competitive edge in the job market.

For a full list of combined degree options visit flinders.edu.au/combineddegrees

I want to study medicine in Adelaide or the Northern Territory



[†] Applicants for the double degree in Adelaide must not have a record of study at a higher education level. Applicants for the CDU/Flinders double degree in Darwin may have completed up to one year of higher education study. * A minimum GPA is required to progress from the Clinical Science to the MD.

Starting at Flinders

One of the world's top universities, Flinders offers students a supportive, inclusive education in an unrivalled study environment.



Flinders is ranked in the top 2% of universities in the world*

* THE World University Rankings 2022 as a percentage of the total number of universities in the world according to the International Association of Universities

This is Flinders

Flinders Adelaide campuses include the Bedford Park campus, featuring an award-winning hub and plaza, with retail, food outlets and a state-of-the-art sport and fitness centre.

Flinders at Tonsley houses state-of-the-art facilities and close links to industry. In 2024, our Victoria Square CBD campus will move to the stunning new Flinders at Festival Tower on North Terrace, right beside the Adelaide Railway Station.

Take a virtual tour of Flinders University and explore our amazing locations. It's the next best thing to being here!

[Flinders.edu.au/vr](https://flinders.edu.au/vr)

Flinders at Festival Plaza – opening 2024

Flinders University students want flexibility, convenience and connectivity. That's why we're taking our presence in the Adelaide CBD to a whole new level. As an anchor tenant in the new Festival Plaza development on North Terrace, Flinders will offer new courses and new career pathways in a new city campus.

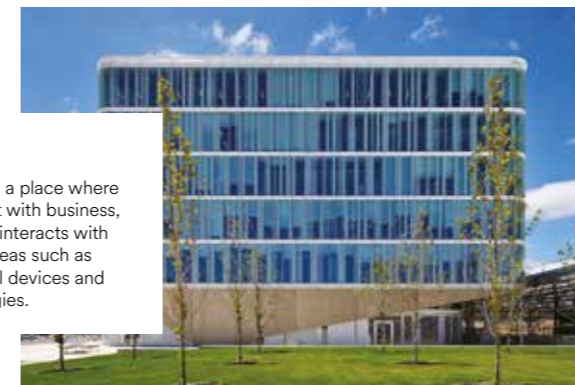


Flinders in the Northern Territory

Flinders has many sites across the Northern Territory, our aim is to be a hub for innovative health research, education and workforce development in the NT.

Tonsley

Flinders at Tonsley is a place where our students interact with business, and where business interacts with our researchers in areas such as engineering, medical devices and nanoscale technologies.



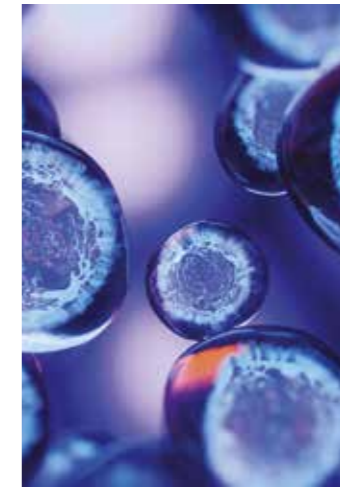
Expansive footprint

Flinders' health and medical footprint stretches from Adelaide to rural and remote areas in South Australia and the Northern Territory, enabling students and practitioners from an array of cultures and contexts to provide healthcare to a vast range of communities.



The future of
**MEDICAL
RESEARCH**
is **HERE**

New Health & Medical Research Building opening 2024



Flinders University is investing in a world-class Health and Medical Research Building (HMRB) for Southern Adelaide.

As a leading research facility, it will enable collaboration between researchers, healthcare and industry partners, translating world-class research into improved community healthcare outcomes.

The new facility will provide a focus for education and lifelong learning, leveraging academic and research opportunities, and providing platforms for collaboration, innovation and the exchange of knowledge.

Seamlessly connected to Flinders University at Tonsley and Flinders in the CBD by the new Flinders train station, HMRB is the first stage and centrepiece of our Flinders Village development – Adelaide’s largest fully integrated education, research and healthcare precinct.

To learn more visit:



Getting to Flinders

Transport options

The Flinders Railway Line gets you from the CBD to Tonsley in a super-fast 20 minutes, or to Bedford Park in just 22 minutes. And with free Campus Connector and Tonsley Link bus services running 7am – 6pm Monday to Friday, getting to and from your studies is simple. You'll be able to schedule your day without worrying about missing a single lecture!

flinders.edu.au/loop-bus

Plan your trip to Flinders:

adelaidemetro.com.au/routes/flndrs

The Flinders railway line is now open

The new Flinders train line has made travel easier and more convenient than ever, linking Bedford Park to our Tonsley campus and the Adelaide city centre, now just 22 minutes away.

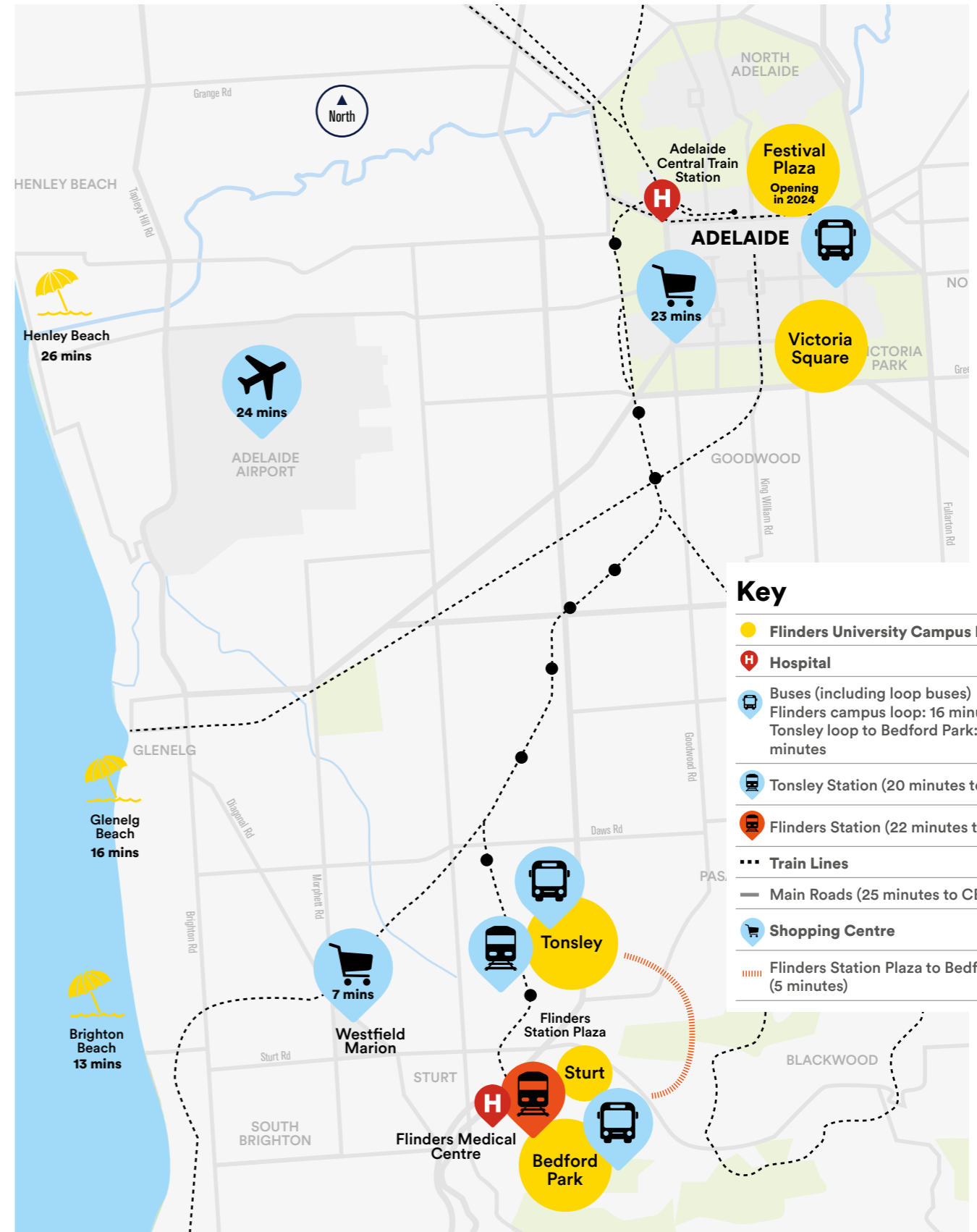
A new link from the north

Opened in June 2022, the electrified Gawler Rail Line provides services from the northern suburbs to the CBD, with express services expected to take around 48 minutes from Gawler to the CBD.

Plan your trip to Flinders CBD:

adelaidemetro.com.au/routes/gawc

Gawler to Festival Plaza in 48 minutes



Get more out of your study

Combined degrees

Combining your degree with a qualification in another discipline will give you more expertise and expand your career prospects. Studying a combined degree at Flinders will help you stand out from the crowd. A combined degree is a combination of two Flinders bachelor degrees. As a combined degree graduate you will have two qualifications in just one to one-and-a-half years of extra study.

There are dozens of combinations available, so why not explore your interests and find out where a combined degree could take you?

Our combined degree programs are designed to enhance your educational, academic and professional qualifications while minimising the cost and length of your studies. Flinders' combined degrees allow you to undertake in-depth study in exciting combinations that aren't usually available in single degrees.

flinders.edu.au/combineddegrees

Combine your Bachelor of

Criminology with

Law and Society, International Relations and Political Science

Laws and Legal Practice with

Arts, Business, Criminology, Behavioural Science (Psychology), International Relations and Political Science

Medical Science with

Engineering (Biomedical) (Honours)

Psychological Science with

Criminology

Business (Human Resource Management)

Business (Marketing)

Sport, Health and Physical Activity

Languages

Science (Forensic and Analytical Science) with

Archaeology

Criminology

Begin your journey to a successful career

Flinders diplomas

Flinders' diploma-level qualifications give you the chance to experience university life without having to commit to long-term study.

The one-year Diploma in Business, Diploma in Laws, or Diploma in Arts give you the chance to explore a range of interests, and successful completion allows you to apply for up to one year of credit towards a range of bachelor degrees, and guaranteed entry to the following courses:

- Bachelor of Archaeology
- Bachelor of Arts
- Bachelor of Business
- Bachelor of Business (Human Resource Management, International Business, Management, Marketing, Sports Management)
- Bachelor of Business Economics
- Bachelor of Creative Industries (Digital Media, Film and Television, Interactive Design, Theatre and Performance, Writing and Publishing, Festivals and Arts Production)
- Bachelor of Disability and Community Inclusion
- Bachelor of Disability and Developmental Education
- Bachelor of Engineering Science
- Bachelor of Information Technology
- Bachelor of International Business (Wine, Spirits and Tourism)
- Bachelor of International Relations and Political Science
- Bachelor of Law and Society
- Bachelor of Laws
- Bachelor of Laws (Honours)
- Bachelor of Laws and Legal Practice
- Bachelor of Laws and Legal Practice (Honours)
- Bachelor of Science

Standard University admission requirements apply.

flinders.edu.au/diplomas

Pathways to study

Whether you are a school leaver or returning to study at a later date, there are many ways to gain admission to Flinders University. Explore your options and find the entry path that's right for you.

If you have secondary education

Year 12 Entry

Most Year 12 applicants enter university via the traditional entry method, where offers are made to eligible applicants with the highest selection rank until all places in the degree are filled. Your selection rank is used by Flinders to assess your admission to a course and is based on your ATAR plus any adjustment factors for which you are eligible.

flinders.edu.au/year12

Guaranteed entry

If you achieve an ATAR equal to or above the published guaranteed entry selection rank (and you meet course prerequisites) you will be guaranteed a place at Flinders. We offer guaranteed entry for most courses.

Indigenous Admission Scheme

The Indigenous Admission Scheme provides an alternative pathway for Aboriginal and Torres Strait Islander people, who may not have been able to gain entry to university by traditional means, with the opportunity to study at Flinders.

See page 20 for further details.

Elite Athlete Pathway

If you've officially represented your school or state at a national level competition, we'll consider your school's recommendation about your academic potential when you apply.

flinders.edu.au/study/sport/elite-athletes

Research Project B Pathway

If you have strong results in the Research Project B subject you will be considered for entry into Flinders on the basis of your Year 12 results and Research Project B performance.

flinders.edu.au/study/pathways/year-12-entry/research-project

School Recommendation Program

We may consider your school's recommendation about your academic performance as part of your admission into Flinders.

uniTEST

If you're in Year 12, uniTEST is available to enhance your chances of getting into Flinders. We will select students based on their Year 12 results (60% weighting toward the ATAR selection rank) and uniTEST results (40%). Flinders will also consider applicants based on their uniTEST results (100%) as a standalone entry score (subject to SACE completion and any course prerequisites or specific admissions requirements). If you take the test and don't do well, we will only consider your highest selection rank.

flinders.edu.au/unitest

If you haven't achieved the results you expected

If you haven't achieved the results you expected in Year 12, there are a number of pathways to your preferred degree. You can start studying one course and move to another via internal transfer or Flinderslink.

flinders.edu.au/study/pathways/flinderslink

Pathways to study

If you have work and life experience

Foundation Studies

The Foundation Studies program has been designed to introduce you to university study in a supportive learning environment. Open to people from all backgrounds, Foundation Studies provides a pathway to gain entry to most degrees at Flinders and offers guaranteed entry into some degrees.

finders.edu.au/study/pathways/foundation-studies

Military Pathways

Use your military service in the Australian Defence Force as a pathway to a Flinders University degree.

finders.edu.au/study/pathways/military-veterans

Special Tertiary Admissions Test (STAT)

Adult entry to university via the Special Tertiary Admissions Test (STAT) enables people aged 18 years and over to apply to study at Flinders via the Special Tertiary Admissions Test (STAT). Applications are made via SATAC.

satac.edu.au/stat

Alternatively, you may wish to consider an undergraduate certificate or diploma. These shorter courses allow you the opportunity to explore your interests and to progress to further study. Certificate courses are Commonwealth supported.

finders.edu.au/pathways

If you have some higher education

Tertiary Transfer

If you have completed at least one semester of full-time equivalent study at university, you may be able to transfer to study at Flinders University using your grade point average (GPA).

TAFELink

Flinders offers guaranteed entry to selected degrees for applicants who have completed a TAFE/VET Certificate IV or higher-level qualification, as long as degree prerequisites are met.

finders.edu.au/tafelink

TAFE SA Dual Offers

Flinders University together with TAFE SA offer dual offer pathways in various disciplines.

Student support

Whatever you decide to study at Flinders, we're always here to help you succeed.

Careers & Employability Service

The Careers and Employability Service helps give you the edge in your career. CareerHub, our online employment portal, offers personalised job opportunities, career planning, programs to help you broaden your skills and experience, access to employer events and career-related resources. Whatever you are studying, CareerHub can help you find your direction and start your career.

finders.edu.au/careers

Flinders Connect

Flinders Connect can help with everything from enrolment and fees to exams and graduation. You can also access Flinders Connect for specialist services in admissions, careers and IT help. A range of support services is also available.

finders.edu.au/flindersconnect

Flinders Library

Our extensive library is more than a book repository. We provide a range of services such as computing and printing, document delivery and one-on-one librarian appointments for assistance with search strategies and finding resources for your assignments.

library.finders.edu.au

Flinders Living

Flinders is the only university in Adelaide that gives you the opportunity to live on campus, and both University Hall and Deirdre Jordan Village are located within the Bedford Park campus. The wide range of social, sporting and community activities also enhances the student experience at Flinders Living.

finders.edu.au/living

Flinders University Student Association

The Flinders University Student Association (FUSA) continues a long tradition of active student involvement and represents the rights and interests of students. FUSA manages social events, non-sporting clubs and societies, and the student publication Empire Times, and helps with academic, administrative and welfare issues.

fusa.edu.au

Health, Counselling and Disability Services

Managing your health is important. We have facilities and services available to help you look after your physical and mental health.

finders.edu.au/hcd

Horizon Award

The Flinders Horizon Award program sits alongside your academic studies; it is an innovative program that provides further opportunities to develop your professional skills and gain new experiences and insights that will benefit you now and in your future career.

finders.edu.au/horizon

Transition to university

Starting at university is a big step; let's make it easier. The Student Learning Centre provides a range of services from writing and mathematics support to assistance with study and time-management skills.

students.finders.edu.au/study-support/slc

Yungkurinthe Student Engagement

Yungkurinthe Student Engagement is committed to increasing Aboriginal and Torres Strait Islander student access, participation, retention and success at Flinders University. Providing a range of services and supports for Aboriginal and Torres Strait Islander students, our team of highly qualified staff is dedicated to supporting you throughout your student journey.

finders.edu.au/study/indigenous-students

Indigenous Admission Scheme

The Indigenous Admission Scheme provides an alternative pathway for Aboriginal and Torres Strait Islander people, who may not have been able to gain entry to university by traditional means, with the opportunity to study at Flinders.

Are you eligible?

To be eligible for the Indigenous Admission Scheme you must be an Aboriginal or Torres Strait Islander person in accordance with the Commonwealth definition, which requires you to:

- be of Aboriginal or Torres Strait Islander descent, and
- identify as an Aboriginal or Torres Strait Islander, and
- be accepted as an Aboriginal or Torres Strait Islander in the community in which you live or have lived. You may be currently studying Year 12 or be a non-school leaver.

How to apply

1. Apply for the course you want to study through the South Australian Tertiary Admissions Centre (SATAC). You will get an application number from SATAC that you will need for your Indigenous Admission Scheme application form.
2. Complete the Indigenous Admission Scheme application form online (flinders.edu.au/indigenousadmissions). If you are having trouble completing an online application, you can request a paper based application via ias@flinders.edu.au or call us on 08 8201 3033.
3. An interview is part of the application process, but you will be notified about this.

Application and interview dates

First round applications close late November and second round applications close early January for semester 1. For our midyear intake to a number of courses, applications close in June.

flinders.edu.au/indigenousadmissions



“I originally chose Flinders as they have one of the best facilities for future teachers and fantastic student engagement. Studying at Flinders has been a wonderful experience that has given me the opportunity to discover what I truly want into the future while also providing me with support in every way imaginable. Flinders and Yungkurinthe have given me the opportunity to meet others with similar ambitions and goals as myself and find the benefit of an education in places I would never have thought to look. As a proud Indigenous woman, I want to use my degree to work in First Nation communities to help our young people make it through their high schooling experience and onto their own future aspirations.”

Emilee Pyrke

Bachelor of Arts,
Conditional entry to Master of Teaching (Secondary)

Study abroad/scholarships

Over 450 scholarships worth \$2.4 million in total – ranging from \$1,000 to \$20,000.

Take your studies overseas

Why wait until you graduate to explore the world? Flinders' Learn Without Borders could see you studying overseas, gaining a unique perspective and immersing yourself in a different culture, language and lifestyle. Our global study programs are designed to allow students to take their Flinders study overseas and earn academic credit toward their Flinders program. With 70+ overseas partner universities, why wait until you graduate to see the world?

flinders.edu.au/learn-without-borders

Explore Flinders scholarships

Flinders offers a generous range of scholarships for students in undergraduate courses. With over 450 available scholarships, including scholarships to students from low socio-economic backgrounds, students from rural and regional areas, and Aboriginal and Torres Strait Islander students, you may be eligible for support that will help you achieve your goals at university.

flinders.edu.au/scholarships

“I always knew I wanted to study overseas at some stage during my degree. A semester exchange gave me the chance to complete topics that weren't available in my home university and experience life in a city that is very different to my own. Having completed a semester overseas, I now have an edge over the countless other students that are completing the same degree as me and have formed memories that will always stay with me.”

Annelise Smith

Bachelor of Business
(Advanced Leadership)

“The Wyndham Richardson Scholarship Fund has been invaluable to reduce the financial pressure during studies, especially now that I am in the later years of my degree.”

Ryan Rowston

Bachelor of Computer Science

Wyndham Richardson Scholarship Fund recipient

How to apply

Check the application dates

Applicants need to apply through the South Australian Tertiary Admissions Centre (SATAC)

satac.edu.au

Read the course information

- check the admission criteria
- check the prerequisites
- check assumed knowledge and additional admission criteria
- consider combined degrees
- consider pathways to your degree

Visit us

- attend Flinders Open Days
- check other upcoming events at events.flinders.edu.au

Contact us if you have any questions

- call 1300 354 633 (local call cost)
- email askflinders@flinders.edu.au

Apply

- apply through SATAC at satac.edu.au
- apply for scholarships at flinders.edu.au/scholarships
- lodge separate Indigenous Admission Scheme (if applicable) at flinders.edu.au/indigenousadmissions

Accept your offer

Enrol in your subject/topics at

students.flinders.edu.au/my-course/enrolment

When can I start?

Flinders offers two admissions cycles each year for undergraduate degrees.

Semester 1 – March start

Applications open in August for commencement the following year.

Semester 2* – July start

Mid-year applications open in August for commencement in July the following year.

* Not all degrees are offered for semester 2.

Key dates

Flinders Open Days: Friday 12 August, Saturday 13 August 2022

Semester 1 2023 start date: 27 February 2023

Semester 1 Orientation week: 20 February 2023

Semester 2 2023 start date: 17 July 2023

Semester 2 Orientation week: 24 July 2023

Fees and charges

Your course fees – Commonwealth support

All our courses list indicative fees, but as an undergraduate student your course is Commonwealth supported provided you're an eligible Australian citizen, New Zealand citizen or permanent resident.

Your course being Commonwealth supported means that your course fees are shared between the Australian government and you – with your portion being the student contribution amount.

HECS-HELP loan

You won't have to pay your fees up-front if you're an Australian citizen or holder of a permanent humanitarian visa. You can get a HECS-HELP loan for your student contribution portion of your uni fees. Find out more about costs to plan for while you're at uni at

flinders.edu.au/fees

Glossary

There are many terms used within a university that may be unfamiliar or confusing. Below are a few terms that may need explanation.

Admission pathway

Any one of the options available to a prospective higher education student that will enable them to meet the entry requirements of their chosen courses.

ATAR

The Australian Tertiary Admission Rank (ATAR) is a ranking from 30 (lowest) to 99.95 (highest) agreed by COAG as a nationally equivalent measure of a person's relative academic ranking within their complete age cohort in the year they graduated from senior secondary school.

Adjustment factors

Often referred to as 'bonus points', these are additional points that may be used in combination with an applicant's university aggregate to derive a person's course selection rank.

Defer

Delaying the start of a course of study by one year (commencing students only). If you have already enrolled, then you need to withdraw from topics before you can defer.

Not all courses are deferrable, please visit flinders.edu.au/defer for details.

Guaranteed entry selection rank

Achieve a selection rank equal to or above the published guaranteed entry selection rank and you'll be guaranteed a place at Flinders.

Major

A sequence of topics required to be taken as defined in your course rule, normally across all years of a course.

Minor

A sequence of topics required to be taken as defined in your course rule, generally as part of a major.

Offer round/s

Refers to the series of dates on which offers of higher education places are issued to applicants throughout the year, whether through a tertiary admission centre or directly by a higher education provider.

Selection rank

The ranking that tertiary admission centres and most universities actually use to assess admission to a course. A person's course selection rank can include their ATAR, any adjustments they are eligible for, such as equity or subject adjustments, other contributions calculated on the basis of work experience or previous non-secondary study, portfolio assessments, results of the Special Tertiary Admissions Test, other supplementary tests, etc.

Listing your SATAC preferences

You may enter up to six course preferences that you would like to study. You should list these in order in which you'd like to study them, with the one you would like most listed first. If you cannot be offered a place in your first preference, you will then be considered for your second preference and so on. It is also important to consider a backup plan. Ensure you include our recommended pathway courses in your preferences.

Medicine

Contact us

Our friendly staff are available to answer your questions:

1300 354 633 (local call cost) | askflinders@flinders.edu.au | flinders.edu.au/ask

International students should contact:

+61 8 8201 2727 | flinders.edu.au/international | INTLAdmissions@flinders.edu.au