

2024



# Social Work

## Social Work

Social Work	4
-------------	---

## Starting at Flinders

Location & map	10
Combined degrees	12
Flinders Diplomas	12
Pathways to study	13
Student support	15
Indigenous Admission Scheme	16
Overseas studies & scholarships	17
How to apply	18
Key dates	18
Fees & charges	18
Glossary	19

The following pages feature undergraduate degree programs and information for domestic students, including SATAC codes, selection ranks and more. For international CRICOS codes, visit [finders.edu.au/international](https://finders.edu.au/international)



## Acknowledgement of Country

Flinders University acknowledges the Traditional Owners and Custodians of the lands and waters on which its campuses are located. These are the Traditional Lands of the Arrernte, Dagoman, First Nations of the South East, First Peoples of the River Murray & Mallee region, Jawoyn, Kurna, Larrakia, Ngadjuri, Ngarrindjeri, Ramindjeri, Warumungu, Wardaman and Yolngu people. We honour their Elders past, present and emerging.



## At Flinders, it's all about your life-changing health career.

### Choose your health degree

Flinders University offers a range of future-focused health degrees that will allow you to follow your interest across areas as diverse as medicine, nursing, health sciences, audiology, social work and more. Choose a degree that reflects your passions and graduate with the skills and knowledge to take your place in an ever-changing world.

### Take your place in a critical industry

The importance of health workers to our society has never been more evident, and projected employment growth through to November 2026 looks strong across many health specialities.\*

\* National Skills Commission 2022 occupation projections

### Projected growth through to 2026

- Audiologists and Speech Pathologists/Therapists – 34.7%
- Health Professionals – 15.5%
- Medical Practitioners – 11.7%
- Midwives – 21.6%
- Occupational and Environmental Health Professionals – 15.9%
- Physiotherapists – 28.7%
- Psychologists and Psychotherapists – 13.3%
- Registered Nurses – 13.9%
- Social Workers – 23.2%

### Be taught by leaders in health and care

Flinders' health and care degrees are taught by highly qualified academics who are active in their respective fields and have the practical skills and industry networks to ensure that you graduate more than ready for the next step in your career path.

### Gain real-world experience

Flinders' Work Integrated Learning (WIL) enables you to gain work experience while you study. You'll have the opportunity to gain real-world experience through placements, practicums, field studies and simulated workplace settings and assessment activities. Flinders aims to provide each and every student with access to a WIL opportunity during their studies.

"My degree is really vibrant and dynamic. You do a lot of practical experience in the laboratories and the equipment is really good. The lecturers and tutors are confident in their teaching and they are keen to teach you. We can ask anything from them and they help you negotiate your work."

### Kalpana Dharmasiri

Bachelor of Nursing Preregistration graduate



# Social Work

Social work is the career for those who aspire to change the world for the better, because they believe in social justice.

Nationally and globally, we struggle with issues of child protection, domestic and family violence, housing and homelessness, racial inequalities and many other social problems. Issues of social inequality have become daily headlines, and we need skilled graduates to work towards social change.

## Empower others to improve their lives

Explore a career that contributes towards improvements within society. Your career could see you working in child protection or with older people. You could become a disability advocate or a drug and alcohol counsellor. Your practice could include enhancing the wellbeing of individuals, groups and communities and addressing inequality and injustices.

## A rewarding career

Social work is a large occupation, employing over 46,000 people in 2022.\* Projected employment growth for social workers through to November 2026 is also strong, with expected growth of 23.2%\*\*

Starting a career in social work means joining a field with long-term career prospects.

\* Source: Job Outlook January 2022

\*\* National Skills Commission 2022 occupation projections



## Study for success

With 1,000 hours of industry experience, purpose-built facilities and a highly experienced team of educators, studying social work at Flinders will see you graduate career-ready, with in-demand skills and knowledge.

## No. 1 in SA in Social Work for median salary and learner engagement\*

\* The Good Universities Guide 2022 (undergraduate), public SA-founded universities only

## Bachelor of Social Work

### Bachelor of Social Work (External)\*

Build a career helping, supporting and empowering people. This degree will equip you with the knowledge, skills and values required for social work practice. You'll graduate prepared to work in a range of contexts, including government, not-for-profit and private organisations.

SATAC code (Bedford Park)	224761
SATAC code (Festival Plaza)	284611
SATAC code (External)	244285
Prerequisites	None
Assumed knowledge	None
2023 selection rank	70.00
Guaranteed entry selection rank	80.00
TAFElink	Dip or above
Adjustment factors	Yes

4 years full-time

Part-time available

Deferrable

Online\*

\* Students can choose to enrol in individual topics face to face or online (plus placement/intensive). In accordance with AASW requirements, students are required to attend the Bedford Park campus in South Australia for 20 days of face-to-face learning, focusing on practice skills. This is taught in intensives so that students in regional and remote areas and interstate can travel to attend.

Students are required to undertake a National Police Check as well as screening assessments through the Department of Human Services (DHS) for working with children, in the aged care sector and disability services. Students may also be required to address other industry-specific conditions before commencing placement.

- You will be prepared to enact the values of the profession, including respect for persons, social justice and professional integrity and to work in a culturally responsive and inclusive manner.
- You will learn to apply social work theories, methods and skills to enhance the wellbeing of individuals, groups and communities and to address inequality and injustice. Incorporating knowledge from a range of disciplines, including psychology, health, law, government and politics, sociology and social policy, you will focus on the interaction between people, their environments and broader societal structures.
- This degree provides you with valuable industry experience, including two 500-hour supervised work placements in settings such as child protection services, hospitals, mental health services, aged care services and schools.
- You'll also gain practical experience in the purpose-built on-campus Social Work Skills and Simulation Lab.
- On graduation, you'll be eligible for membership of the Australian Association of Social Workers.

### Career opportunities

Your degree could open up a range of employment opportunities, including:

- direct practice with individuals
- group work
- community development
- research
- social policy.

### Areas of employment include:

- child protection
- health
- mental health
- domestic violence
- homelessness
- local, state and Australian government.



"I'm enjoying these new experiences and putting myself outside my usual comfort zone on placement. It can be challenging, but I can feel myself growing and my skills expanding. Flinders provided me with a variety of resources to help during placement. My external field educator has been a massive help, providing guidance and helping me set an agenda to cover a whole range of things while on placement."

### Eric Amini

Bachelor of Social Work

Find out how social work placement is helping kickstart Eric's career:





# Starting at Flinders

One of the world's top universities, Flinders offers students a supportive, inclusive education in an unrivalled study environment.



**Flinders is ranked in the top 2% of universities in the world\***

\* THE World University Rankings 2023 as a percentage of the total number of universities in the world according to the International Association of Universities

## This is Flinders

Flinders Adelaide campuses include the Bedford Park campus, featuring an award-winning hub and plaza, with retail, food outlets and a state-of-the-art sport and fitness centre.

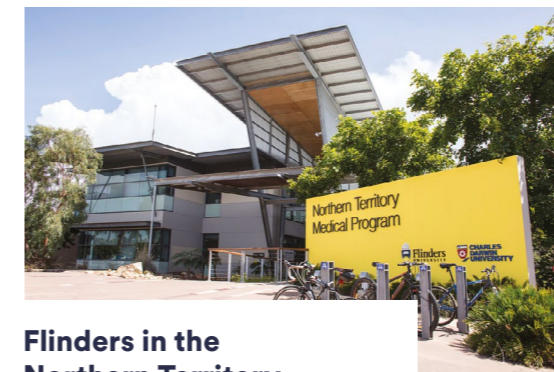
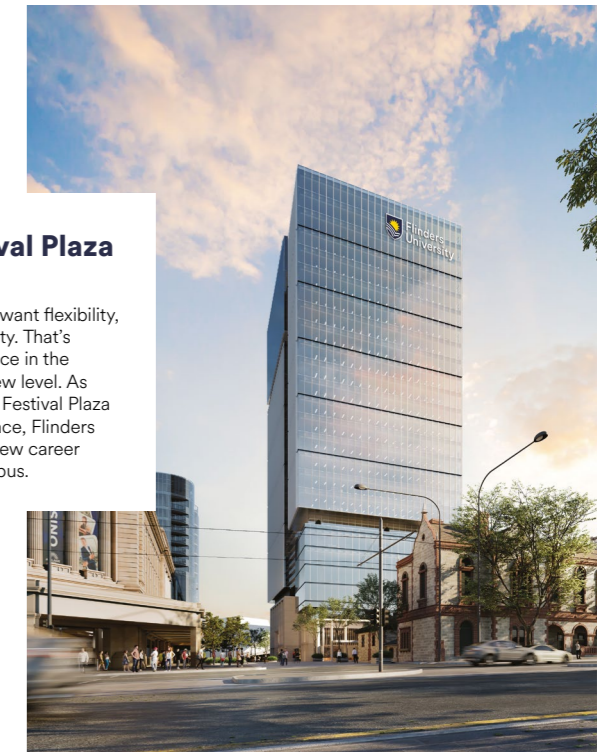
Flinders at Tonsley houses state-of-the-art facilities and close links to industry. In 2024, our Victoria Square CBD campus will move to the stunning new Flinders at Festival Tower on North Terrace, right beside the Adelaide Railway Station.

Take a virtual tour of Flinders University and explore our amazing locations. It's the next best thing to being here!

[Flinders.edu.au/vr](https://flinders.edu.au/vr)

### Flinders at Festival Plaza – opening 2024

Flinders University students want flexibility, convenience and connectivity. That's why we're taking our presence in the Adelaide CBD to a whole new level. As an anchor tenant in the new Festival Plaza development on North Terrace, Flinders will offer new courses and new career pathways in a new city campus.

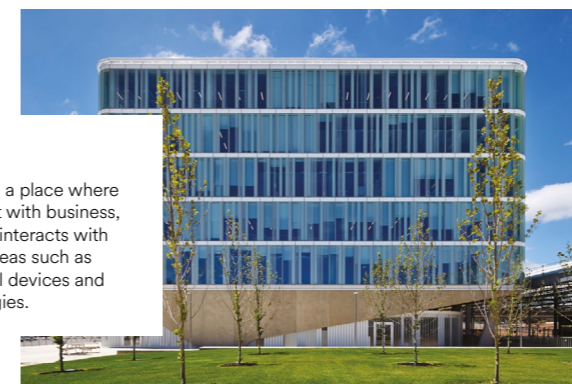


### Flinders in the Northern Territory

Flinders has many sites across the Northern Territory, our aim is to be a hub for innovative health research, education and workforce development in the NT.

### Tonsley

Flinders at Tonsley is a place where our students interact with business, and where business interacts with our researchers in areas such as engineering, medical devices and nanoscale technologies.



### Expansive footprint

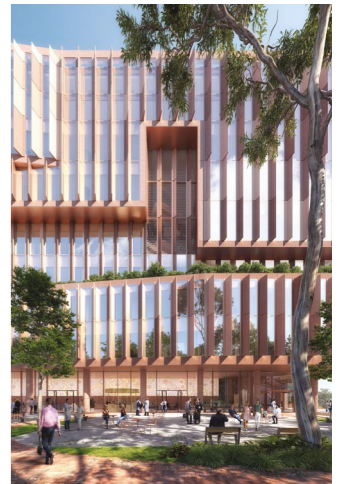
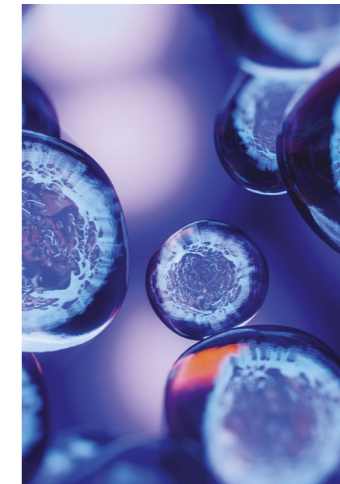
Flinders' health and medical footprint stretches from Adelaide to rural and remote areas in South Australia and the Northern Territory, enabling students and practitioners from an array of cultures and contexts to provide healthcare to a vast range of communities.





The future of  
**MEDICAL  
RESEARCH**  
is **HERE**

## New Health & Medical Research Building opening 2024



**Flinders University is investing in a world-class Health and Medical Research Building (HMRB) for Southern Adelaide.**

As a leading research facility, it will enable collaboration between researchers, healthcare and industry partners, translating world-class research into improved community healthcare outcomes.

The new facility will provide a focus for education and lifelong learning, leveraging academic and research opportunities, and providing platforms for collaboration, innovation and the exchange of knowledge.

Seamlessly connected to Flinders University at Tonsley and Flinders in the CBD by the new Flinders train station, HMRB is the first stage and centrepiece of our Flinders Village development – Adelaide’s largest fully integrated education, research and healthcare precinct.

To learn more visit:





# Getting to Flinders

## Transport options

The Flinders Railway Line gets you from the CBD to Tonsley in a super-fast 20 minutes, or to Bedford Park in just 22 minutes. And with free Campus Connector and Tonsley Link bus services running 7am – 6pm Monday to Friday, getting to and from your studies is simple. You'll be able to schedule your day without worrying about missing a single lecture!

[flinders.edu.au/loop-bus](http://flinders.edu.au/loop-bus)

## Plan your trip to Flinders:

[adelaidemetro.com.au/routes/flndrs](http://adelaidemetro.com.au/routes/flndrs)

## The Flinders railway line is now open

The new Flinders train line has made travel easier and more convenient than ever, linking Bedford Park to our Tonsley campus and the Adelaide city centre, now just 22 minutes away.

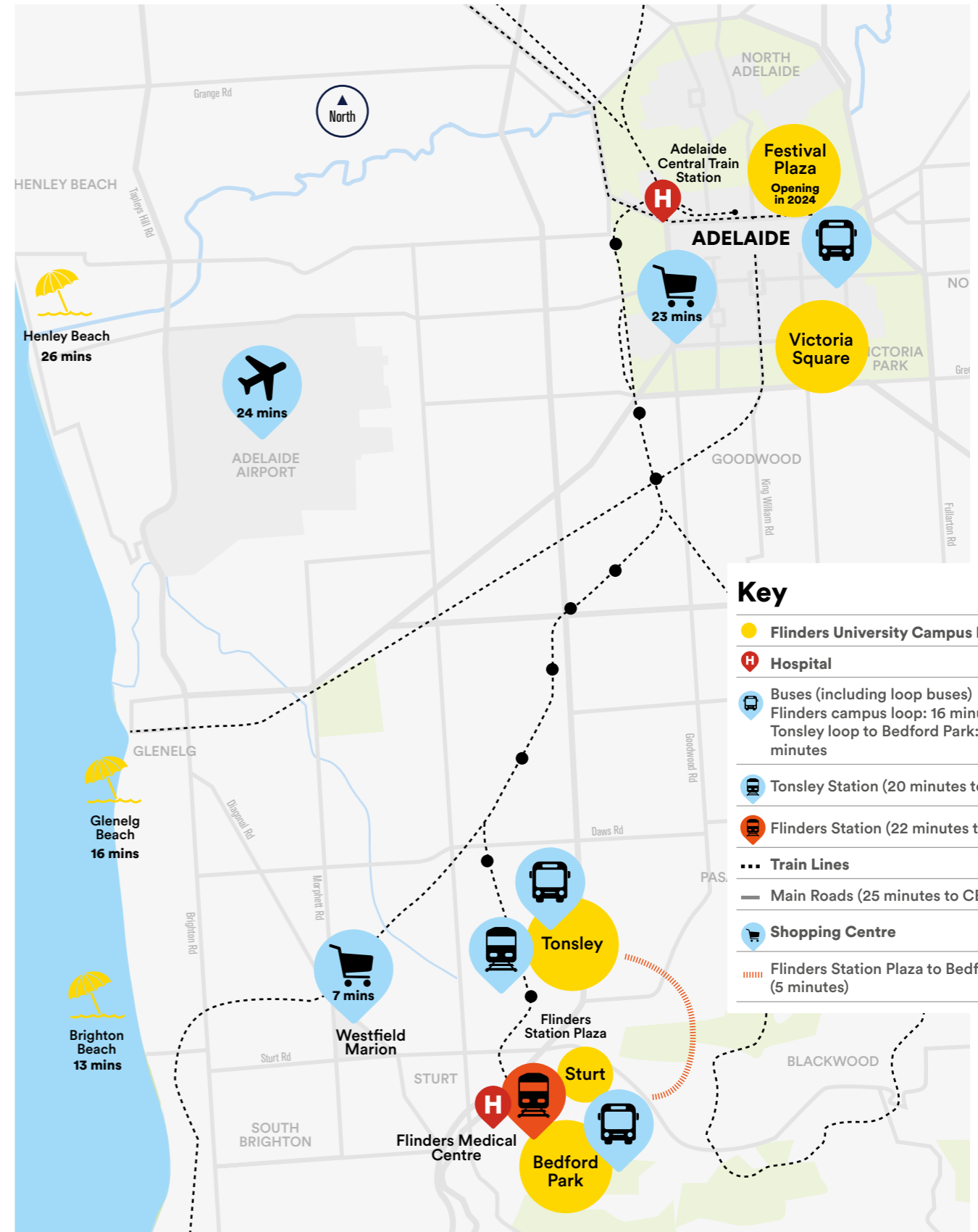
## A new link from the north

Opened in June 2022, the electrified Gawler Rail Line provides services from the northern suburbs to the CBD, with express services expected to take around 48 minutes from Gawler to the CBD.

## Plan your trip to Flinders CBD:

[adelaidemetro.com.au/routes/gawc](http://adelaidemetro.com.au/routes/gawc)

**Gawler to Festival Plaza in 48 minutes**



# Get more out of your study

## Combined degrees

Combining your degree with a qualification in another discipline will give you more expertise and expand your career prospects. Studying a combined degree at Flinders will help you stand out from the crowd. A combined degree is a combination of two Flinders bachelor degrees. As a combined degree graduate you will have two qualifications in just one to one-and-a-half years of extra study.

There are dozens of combinations available, so why not explore your interests and find out where a combined degree could take you?

Our combined degree programs are designed to enhance your educational, academic and professional qualifications while minimising the cost and length of your studies. Flinders' combined degrees allow you to undertake in-depth study in exciting combinations that aren't usually available in single degrees.

### [finders.edu.au/combineddegrees](https://finders.edu.au/combineddegrees)

Combine your Bachelor of

#### **Criminology with**

Law and Society, International Relations and Political Science

#### **Laws and Legal Practice with**

Arts, Business, Criminology, Psychology, International Relations and Political Science

#### **Medical Science with**

Engineering (Biomedical) (Honours)

#### **Psychological Science with**

Criminology

Business (Human Resource Management)

Business (Marketing)

Sport, Health and Physical Activity

Languages

#### **Science (Forensic and Analytical Science) with**

Archaeology

Criminology

# Begin your journey to a successful career

## Flinders diplomas

Flinders' diploma-level qualifications give you the chance to experience university life without having to commit to long-term study.

The one-year Diploma in Business, Diploma in Sports Management, Diploma in Laws, or Diploma in Arts give you the chance to explore a range of interests, and successful completion allows you to apply for up to one year of credit towards a range of bachelor degrees, and guaranteed entry to the following courses:

- Bachelor of Archaeology
- Bachelor of Arts
- Bachelor of Business
- Bachelor of Business (Human Resource Management, International Business, Management, Marketing, Sports Management)
- Bachelor of Business Economics
- Bachelor of Creative Industries (Digital Media, Film and Television, Interactive Design, Theatre and Performance, Writing and Publishing, Festivals and Arts Production)
- Bachelor of Disability and Community Inclusion
- Bachelor of Disability and Developmental Education
- Bachelor of Engineering Science
- Bachelor of Information Technology
- Bachelor of International Relations and Political Science
- Bachelor of Laws
- Bachelor of Laws (Honours)
- Bachelor of Laws and Legal Practice
- Bachelor of Laws and Legal Practice (Honours)
- Bachelor of Science

Standard University admission requirements apply.

The Diploma in Sports Management will teach you the core skills needed to begin a career in sports management, backed by over 100 hours of practical and hands-on training with Port Adelaide players, management and staff.

The Diploma in Language offers a solid foundation for learning and using a language of your choice, and will help you develop cross-cultural knowledge and skills that are invaluable in international workplaces.

### [finders.edu.au/diplomas](https://finders.edu.au/diplomas)

# Pathways to study

Whether you are a school leaver or returning to study at a later date, there are many ways to gain admission to Flinders University. Explore your options and find the entry path that's right for you.

## If you have secondary education

### Year 12 entry

Most Year 12 applicants enter university via the traditional entry method, where offers are made to eligible applicants with the highest selection rank until all places in the degree are filled. Your selection rank is used by Flinders to assess your admission to a course and is based on your ATAR plus any adjustment factors for which you are eligible.

### [finders.edu.au/year12](https://finders.edu.au/year12)

### Guaranteed entry

If you achieve an ATAR equal to or above the published guaranteed entry selection rank (and you meet course prerequisites) you will be guaranteed a place at Flinders. We offer guaranteed entry for most courses.

### Indigenous Admission Scheme

The Indigenous Admission Scheme provides an alternative pathway for Aboriginal and Torres Strait Islander people, who may not have been able to gain entry to university by traditional means, with the opportunity to study at Flinders.

See page 16 for further details.

### Elite Athlete Pathway

If you've officially represented your school or state at a national level competition, we'll consider your school's recommendation about your academic potential when you apply.

### [finders.edu.au/study/sport/elite-athletes](https://finders.edu.au/study/sport/elite-athletes)

### Research Project B Pathway

If you have strong results in the Research Project B subject you will be considered for entry into Flinders on the basis of your Year 12 results and Research Project B performance.

### [finders.edu.au/study/pathways/year-12-entry/research-project](https://finders.edu.au/study/pathways/year-12-entry/research-project)

### School Recommendation Program

We may consider your school's recommendation about your academic performance as part of your admission into Flinders.

### uniTEST

If you're in Year 12, uniTEST is available to enhance your chances of getting into Flinders. We will select students based on their Year 12 results (60% weighting toward the ATAR selection rank) and uniTEST results (40%). Flinders will also consider applicants based on their uniTEST results (100%) as a standalone entry score (subject to SACE completion and any course prerequisites or specific admissions requirements). If you take the test and don't do well, we will only consider your highest selection rank.

### [finders.edu.au/unitest](https://finders.edu.au/unitest)

### If you haven't achieved the results you expected

If you haven't achieved the results you expected in Year 12, there are a number of pathways to your preferred degree. You can start studying one course and move to another via internal transfer or Flinderslink.

### [finders.edu.au/study/pathways/flinderslink](https://finders.edu.au/study/pathways/flinderslink)

# Pathways to study

## If you have work and life experience

### Foundation Studies

The Foundation Studies program has been designed to introduce you to university study in a supportive learning environment. Open to people from all backgrounds, Foundation Studies provides a pathway to gain entry to most degrees at Flinders and offers guaranteed entry into some degrees.

[flinders.edu.au/study/pathways/foundation-studies](https://flinders.edu.au/study/pathways/foundation-studies)

### Military pathways

Use your military service in the Australian Defence Force as a pathway to a Flinders University degree.

[flinders.edu.au/study/pathways/military-veterans](https://flinders.edu.au/study/pathways/military-veterans)

### Special Tertiary Admissions Test (STAT)

Adult entry to university via the Special Tertiary Admissions Test (STAT) enables people aged 18 years and over to apply to study at Flinders. Applications are made via SATAC.

[satac.edu.au/stat](https://satac.edu.au/stat)

Alternatively, you may wish to consider an undergraduate certificate or diploma. These shorter courses allow you the opportunity to explore your interests and to progress to further study. Certificate courses are Commonwealth supported.

[flinders.edu.au/pathways](https://flinders.edu.au/pathways)

## If you have some higher education

### Tertiary Transfer

If you have completed at least one semester of full-time equivalent study at university, you may be able to transfer to study at Flinders University using your grade point average (GPA).

### TAFElink

Flinders offers guaranteed entry to selected degrees for applicants who have completed a TAFE/VET Certificate IV or higher-level qualification, as long as degree prerequisites are met.

[flinders.edu.au/tafelink](https://flinders.edu.au/tafelink)

### TAFE SA Dual Offers

Flinders University together with TAFE SA offer dual offer pathways in various disciplines.

## Work Integrated Learning

When it comes to landing a job, practical placements can give you the edge you need to succeed.

Flinders' Work Integrated Learning (WIL) will improve your employability by helping you better understand the day-to-day skills employers are looking for, and by giving you the chance to gain real experience in a workplace environment directly related to the course you're studying.

You might take on a work placement or internship, gain hands-on experience through field education, or get involved in projects with industry or community organisations.

Your WIL experience will be designed to help you gain that edge.

[Flinders.edu.au/WIL](https://flinders.edu.au/WIL)

# Student support

Whatever you decide to study at Flinders, we're always here to help you succeed.

### Careers & Employability Service

The Careers and Employability Service helps give you the edge in your career. CareerHub, our online employment portal, offers personalised job opportunities, career planning, programs to help you broaden your skills and experience, access to employer events and career-related resources. Whatever you are studying, CareerHub can help you find your direction and start your career.

[flinders.edu.au/careers](https://flinders.edu.au/careers)

### Flinders Connect

Flinders Connect can help with everything from enrolment and fees to exams and graduation. You can also access Flinders Connect for specialist services in admissions, careers and IT help. A range of support services is also available.

[flinders.edu.au/flindersconnect](https://flinders.edu.au/flindersconnect)

### Flinders Library

Our extensive library is more than a book repository. We provide a range of services such as computing and printing, document delivery and one-on-one librarian appointments for assistance with search strategies and finding resources for your assignments.

[library.flinders.edu.au](https://library.flinders.edu.au)

### Flinders Living

Flinders is the only university in Adelaide that gives you the opportunity to live on campus, and both University Hall and Deirdre Jordan Village are located within the Bedford Park campus. The wide range of social, sporting and community activities also enhances the student experience at Flinders Living.

[flinders.edu.au/living](https://flinders.edu.au/living)

### Flinders University Student Association

The Flinders University Student Association (FUSA) continues a long tradition of active student involvement and represents the rights and interests of students. FUSA manages social events, non-sporting clubs and societies, and the student publication Empire Times, and helps with academic, administrative and welfare issues.

[fusa.edu.au](https://fusa.edu.au)

### Health, Counselling & Disability Services

Managing your health is important. We have facilities and services available to help you look after your physical and mental health.

[flinders.edu.au/hcd](https://flinders.edu.au/hcd)

### Horizon Award

The Flinders Horizon Award program sits alongside your academic studies; it is an innovative program that provides further opportunities to develop your professional skills and gain new experiences and insights that will benefit you now and in your future career.

[flinders.edu.au/horizon](https://flinders.edu.au/horizon)

### Transition to university

Starting at university is a big step; let's make it easier. The Student Learning Centre provides a range of services from writing and mathematics support to assistance with study and time-management skills.

[students.flinders.edu.au/study-support/slc](https://students.flinders.edu.au/study-support/slc)

### Yungkurinthe Student Engagement

Yungkurinthe Student Engagement is committed to increasing Aboriginal and Torres Strait Islander student access, participation, retention and success at Flinders University. Providing a range of services and supports for Aboriginal and Torres Strait Islander students, our team of highly qualified staff is dedicated to supporting you throughout your student journey.

[flinders.edu.au/study/indigenous-students](https://flinders.edu.au/study/indigenous-students)



# Indigenous Admission Scheme

The Indigenous Admission Scheme provides an alternative pathway for Aboriginal and Torres Strait Islander people, who may not have been able to gain entry to university by traditional means, with the opportunity to study at Flinders.

## Are you eligible?

To be eligible for the Indigenous Admission Scheme you must be an Aboriginal or Torres Strait Islander person in accordance with the Commonwealth definition, which requires you to:

- be of Aboriginal or Torres Strait Islander descent, and
- identify as an Aboriginal or Torres Strait Islander, and
- be accepted as an Aboriginal or Torres Strait Islander in the community in which you live or have lived.

You may be currently studying Year 12 or be a non-school leaver.

## How to apply

1. Apply for the course you want to study through the South Australian Tertiary Admissions Centre (SATAC). You will get an application number from SATAC that you will need for your Indigenous Admission Scheme application form.
2. Complete the Indigenous Admission Scheme application form online ([finders.edu.au/indigenousadmissions](https://finders.edu.au/indigenousadmissions)). If you are having trouble completing an online application, you can request a paper-based application via [ias@finders.edu.au](mailto:ias@finders.edu.au) or call us on 08 8201 3033.
3. An interview is part of the application process, but you will be notified about this.

## Application and interview dates

First round applications close late November and second round applications close early January for semester 1. For our midyear intake to a number of courses, applications close in June.

[finders.edu.au/indigenousadmissions](https://finders.edu.au/indigenousadmissions)



“I originally chose Flinders as they have one of the best facilities for future teachers and fantastic student engagement. Studying at Flinders has been a wonderful experience that has given me the opportunity to discover what I truly want into the future while also providing me with support in every way imaginable. Flinders and Yungkurinthe have given me the opportunity to meet others with similar ambitions and goals as myself and find the benefit of an education in places I would never have thought to look. As a proud Indigenous woman, I want to use my degree to work in First Nation communities to help our young people make it through their high schooling experience and onto their own future aspirations.”

### Emilee Pyrke

Bachelor of Arts,  
Conditional entry to Master of  
Teaching (Secondary)

# Study abroad/scholarships

Over 450 scholarships worth \$2.4 million in total – ranging from \$1,000 to \$20,000.

## Take your studies overseas

Why wait until you graduate to explore the world? Flinders' Learn Without Borders could see you studying overseas, gaining a unique perspective and immersing yourself in a different culture, language and lifestyle. Our global study programs are designed to allow students to take their Flinders study overseas and earn academic credit toward their Flinders program. With 70+ overseas partner universities, why wait until you graduate to see the world?

[finders.edu.au/learn-without-borders](https://finders.edu.au/learn-without-borders)

## Explore Flinders scholarships

Flinders offers a generous range of scholarships for students in undergraduate courses. With over 450 available scholarships, including scholarships to students from low socio-economic backgrounds, students from rural and regional areas, and Aboriginal and Torres Strait Islander students, you may be eligible for support that will help you achieve your goals at university.

[finders.edu.au/scholarships](https://finders.edu.au/scholarships)

“I always knew I wanted to study overseas at some stage during my degree. A semester exchange gave me the chance to complete topics that weren't available in my home university and experience life in a city that is very different to my own. Having completed a semester overseas, I now have an edge over the countless other students that are completing the same degree as me and have formed memories that will always stay with me.”

### Annelise Smith

Bachelor of Business  
(Advanced Leadership)

“The Wyndham Richardson Scholarship Fund has been invaluable to reduce the financial pressure during studies, especially now that I am in the later years of my degree.”

### Ryan Rowston

Bachelor of Computer Science

*Wyndham Richardson Scholarship  
Fund recipient*





## **Social Work**

### **Contact us**

**Our friendly staff are available to answer your questions:**

**1300 354 633 (local call cost) | [askfinders@flinders.edu.au](mailto:askfinders@flinders.edu.au) | [flinders.edu.au/ask](https://flinders.edu.au/ask)**

**International students should contact:**

**+61 8 8201 2727 | [flinders.edu.au/international](https://flinders.edu.au/international) | [INTLAdmissions@flinders.edu.au](mailto:INTLAdmissions@flinders.edu.au)**